



THE 'UK LANDBRIDGE' DESCRIBES THE MOVEMENT OF IRISH IMPORTS AND EXPORTS BETWEEN IRELAND AND THE EUROPEAN CONTINENT VIA THE

UK ROAD & PORTS NETWORK



JOURNEY TIMES TO CONTINENTAL EUROPE



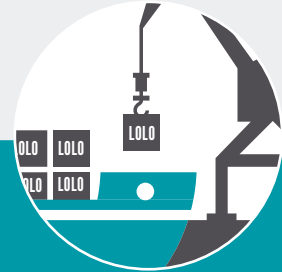
LESS THAN
20
HOURS

VIA THE LANDBRIDGE



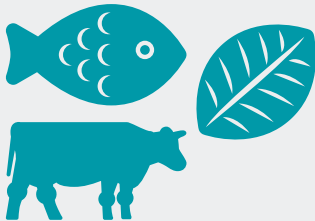
UP TO
40
HOURS

ON RORO SERVICES
VIA DIRECT SEA-ROUTE



UP TO
60
HOURS

LOLO SERVICES VIA
DIRECT SEA-ROUTE



TIME SENSITIVE PRODUCTS
SUCH AS THOSE IN THE AGRI-FOOD SECTOR
RELY ON THE LANDBRIDGE

38% OF UNITISED EXPORTS
TO EU CONTINENTAL PORTS TRANSIT VIA THE UK LANDBRIDGE

Unitised trade is Roll-on/Roll-off and Load-on/Load-off traffic shipments (see glossary)



IRISH TRAFFIC VIA UK LANDBRIDGE
= 3 MILLION TONNES