

Molluscan Shellfish Production Areas, Sample Points and Co-ordinates for Biotoxin and Phytoplankton Samples.

October 2017

Species names / Common names

Scientific Name	Common Name
<i>Magallana gigas</i>	Pacific Oyster
<i>Ensis magnus</i>	Arched Razor Shell
<i>Ensis ensis</i>	Pod Razor Shell
<i>Ensis siliqua</i>	Sword Razor Shell
<i>Mytilus edulis</i>	Blue Mussel
<i>Pecten maximus</i>	King Scallop
<i>Ostrea edulis</i>	Flat/Native Oyster
<i>Ruditapes philipinarum</i>	Manilla Clam
<i>Paracentrotus lividus</i>	Sea Urchin
<i>Aequipecten opercularis</i>	Queen Scallop
<i>Cerastoderma edule</i>	Cockle
<i>Spisula solida</i>	Thick Trough Shell / Surf Clam
<i>Dosinia exoleta</i>	Rayed Artemis
<i>Glycymeris glycymeris</i>	Dog Cockle
<i>Haliotis discus hannai</i>	Japanese Green Abalone
<i>Venerupis corrugata</i>	Carpet Shell
<i>Venus verrucosa</i>	Warty Venus
<i>Patella vulgata</i>	Common Limpet
<i>Littorina littorea</i>	Periwinkle
<i>Buccinum undatum</i>	Common Whelk
<i>Echinus esculentus</i>	Edible Sea Urchin

Production Area Maps

Table of Contents

Lough Foyle.....	1
Tra Breaga.....	2
Lough Swilly	3
Mulroy Bay.....	4
Sheephaven	5
Gweedore	6
Arranmore	7
Dungloe	8
Tra Eanach	9
Gweebarra	10
Loughras Mor.....	11
Loughras Beag.....	12
Teelin	13
Bruckless	14
Inver	15
Donegal Harbour	16
Drumcliff Bay.....	17
Sligo Harbour	18
Ballysadare Bay	19
Killala Bay.....	20
Broadhaven North.....	21
Iniskea Islands	22
Broadhaven South	23
Blacksod Bay	24
Achill North	25
Achill South	26
Clew Bay North	27
Clew Bay South.....	28
Killary Harbour Inner	29
Killary Harbour Mid	30
Killary Harbour Outer	31
Cleggan	32
Streamstown Bay	33
Clifden.....	34
Mannin Bay	35
Ballyconneely	36
Bertraghboy	37
Kilkieran North	38
Kilkieran South	39
Galway Bay North.....	40
Mweeloon Bay	41
Clarinbridge.....	42
Kinvarra	43
Aran Islands.....	44
Aughinish	45
Ballyvaughan.....	46
Carrigaholt	47
Poulnasherry.....	48
Shannon Inner.....	49
Ballylongford.....	50
Tralee Bay	51
Blasket Islands.....	52

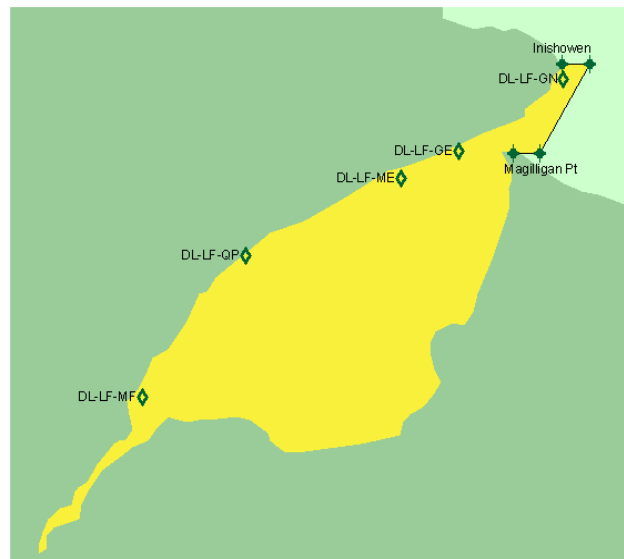
Ventry	53
Dingle.....	54
Castlemaine Harbour.....	55
Valentina River	56
Kilmakilloge.....	57
Kenmare Outer.....	58
Tahilla	59
Kenmare Inner	60
Ardgroom.....	61
Gouleenacoush	62
Cleandra.....	63
Bantry Outer	64
Castletownbere	65
Adrigole	66
Gearhies.....	67
Glengarriff.....	68
Newtown	69
Bantry South	70
Bantry Middle	71
Bantry North	72
Dunmanus Bay	73
Crookhaven.....	74
Schull	75
Roaringwater Bay.....	76
Sherkin West.....	77
Sherkin North.....	78
Baltimore	79
Rosscarberry Bay.....	80
Kinsale	81
Oysterhaven.....	82
Cork Harbour.....	83
Youghal Harbour	84
Dungarven Bay	85
Waterford Harbour.....	86
Bannow Bay	87
Ballyteigue Bay.....	88
Rosslare	89
Wexford Harbour	90
Wexford Bay	91
Malahide.....	92
Skerries	93
Gormanstown	94
Dundalk Bay	95
Carlingford Lough.....	96

ICES Rectangle:

North of Mallin head (40-E2)	97
West of Donegal (39-D9)	97
Donegal Ground (39-E0)	98
Tory Island Ground (39-E1)	98
Malin Head (39-E2).....	99
Middle Ground (39-E3)	99
Mermaid Shoal Ground (39-E4)	100
East of Mermaid Shoal Ground (39-E5)	100
West of Killybegs Ground (38-E0).....	101
Killybegs Ground (38-E1)	101
Riggs Bank (38-E4)	102
Port William Ground (38-E5).....	102
Bellmullet (37-D9)	103
North of Killalla Bay (37-E0)	103
Sligo Ground (37-E1).....	104
Ardglass Bank (37-E4)	104
Isle of Man Ground (37-E5).....	105
East of Isle of Man (37-E6)	105
West of Clew Bay (36-D9)	106
Clogherhead Ground (36-E3)	106
East of Clogherhead (36-E4).....	107
South of Isle of Man (36-E5)	107
Morecambe Bay (36-E6)	108
West of Galway Bay (35-D9)	108
Galway Bay Ground (35-E0)	109
Dunlaoghaire Ground (35-E3)	109
East of Dunlaoghaire Ground (35-E4)	110
Anglesey Ground (35-E5)	110
Liverpool Bay (35-E6).....	111
West of Loop Head (34-D9).....	111
Loop Head Ground (34-E0)	112
Arklow Ground (34-E3)	112
East of Arklow Ground (34-E4).....	113
Devil's Tail Ground (34-E5)	113
Dingle Ground (33-D9).....	114
Helvic Ground (33-E2).....	114
Wexford Ground (33-E3)	115
East of Wexford Ground (33-E4)	115
New Quay Bay (33-E5).....	116
Valentia Ground (32-D9).....	116
Kinsale Ground (32-E1)	117
Mine Head Ground (32-E2)	117
Saltees Ground (32-E3)	118
Smalls Ground (32-E4)	118
English Channel (32-E5)	119
English Channel (32-E6)	119
English Channel (32-E7)	120
Hurd Bank (31-D9).....	120
Fastnet Ground (31-E0)	121
South of Kinsale Ground (31-E1)	121
South of Mine Head Ground (31-E2)	122
South of Smalls Ground (31-E3)	122
Stanley Bay (31-E4).....	123
Lundy Island (31-E5)	123

English Channel (31-E6)	124
Labadie Bank (30-E1)	124
East of Labadie Bank (30-E2)	125
Northwest of Newlyn (30-E3)	125
North of Newlyn (30-E4)	126
English Channel (30-E5)	126
English Channel (30-E6)	127
English Channel (30-E7)	127
English Channel (30-E8)	128
English Channel (30-E9)	128
English Channel (30-F0)	129
English Channel (30-F1)	129
English Channel (29-E0)	130
West Bank (29-E1)	130
Northwest Bank (29-E2)	131
West of Newlyn (29-E3)	131
Newlyn (29-E4)	132
English Channel (29-E5)	123
English Channel (29-E6)	133
English Channel (29-E7)	133
English Channel (29-E8)	134
English Channel (29-E9)	134
English Channel (29-F0)	135
English Channel (29-F1)	135
Cockburn Bank (28-E0)	136
Western Jones Bank (28-E1)	136
Eastern Jones Bank (28-E2)	137
Isles of Scilly (28-E3)	137
South of Newlyn (28-E4)	138
English Channel (28-E5)	138
English Channel (28-E6)	139
English Channel (28-E7)	139
English Channel (28-E8)	140
English Channel (28-E9)	140
English Channel (28-F0)	141
Western Approaches (27-E0)	141
Western Approaches (27-E1)	142
Western Approaches (27-E2)	142
Western Approaches (27-E3)	143
Western Approaches (27-E4)	143
English Channel (27-E5)	144
English Channel (27-E6)	144
English Channel (27-E7)	145
English Channel (27-E8)	145
English Channel (27-E9)	146
West of France (26-E0)	146
West of France (26-E1)	147
West of France (26-E2)	147
West of France (26-E3)	148
West of France (26-E4)	148
West of France (26-E5)	149
English Channel (26-E6)	149
English Channel (26-E7)	150
English Channel (26-E8)	150
West of France (25-E0)	151
West of France (25-E1)	151
West of France (25-E2)	152

West of France (25-E3)	152
West of France (25-E4)	153
West of France (25-E5)	153
West of France (24-E0)	154
West of France (24-E1)	154
West of France (24-E2)	155
West of France (24-E3)	155
West of France (24-E4)	156
West of France (24-E5)	156
West of France (24-E6)	157
West of France (23-E0)	157
West of France (23-E1)	158
West of France (23-E2)	158
West of France (23-E3)	159
West of France (23-E4)	159
West of France (23-E5)	160
West of France (23-E6)	160
West of France (23-E7)	161

Production Area: **DL-LF**Location: **Lough Foyle****Production area is defined as area inside boundary line:**

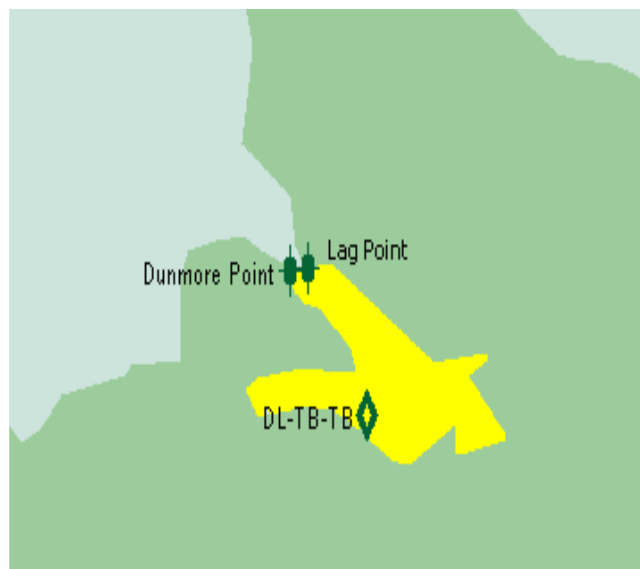
From Inishowen to Point A to Point B to Magilligan Point as shown on chart, up to and including the mean high water mark and coordinates defined as:

Name	Longitude	Latitude
Inishowen	-6.92083	55.23611
Point A	-6.90000	55.23611
Point B	-6.93800	55.19140
Magilligan Point	-6.95806	55.19140

Sample Points:

Location Code	Location	Species	Longitude	Latitude
DL-LF-GE	Greencastle	<i>Mytilus edulis</i> <i>Ostrea edulis</i>	-7.00056	55.19278
DL-LF-GN	Greencastle Co-op	<i>Pecten maximus</i>	-6.91972	55.22889
DL-LF-ME	Moville	<i>Magallana gigas</i> <i>Ostrea edulis</i>	-7.04444	55.17889
DL-LF-MF	Muff	<i>Magallana gigas</i> <i>Ostrea edulis</i>	-7.24333	55.06972
DL-LF-QP	Quigleys Point	<i>Mytilus edulis</i> <i>Ostrea edulis</i>	-7.16389	55.14028

Note: Coordinates are expressed as decimalised longitude and latitude

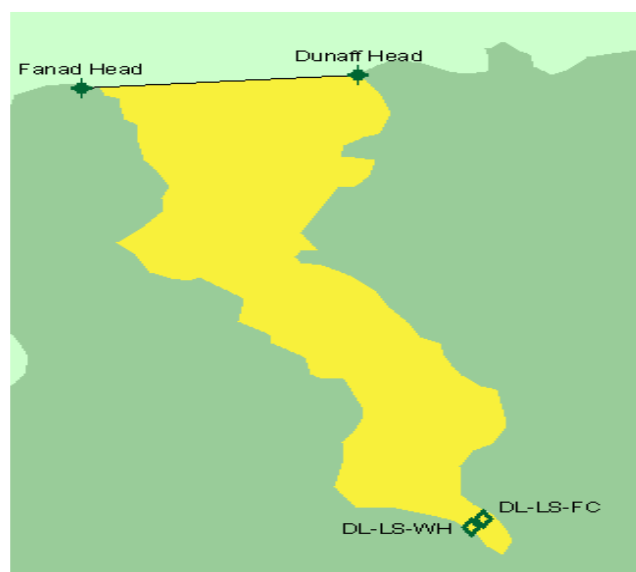
Production Area: **DL-TB**Location: **Tra Breaga****Production area is defined as area inside boundary line:**

From Dunmore Point to Lag Point as shown on chart, up to and including the mean high water mark and coordinates defined as:

Name	Longitude	Latitude
Dunmore Point	-7.33278	55.31028
Lag Point	-7.32583	55.31111

Sample Points:

Location Code	Location	Species	Longitude	Latitude
DL-TB-TB	Tra Breaga	<i>Magallana gigas</i>	-7.30278	55.28389

Production Area: **DL-LS**Location: **Lough Swilly****Production area is defined as area inside boundary line:**

From Fanad Head to Dunaff Head as shown on chart, up to and including the mean high water mark and coordinates defined as:

Name	Longitude	Latitude
Fanad Head	-7.64458	55.27365
Dunaff Head	-7.52370	55.27956

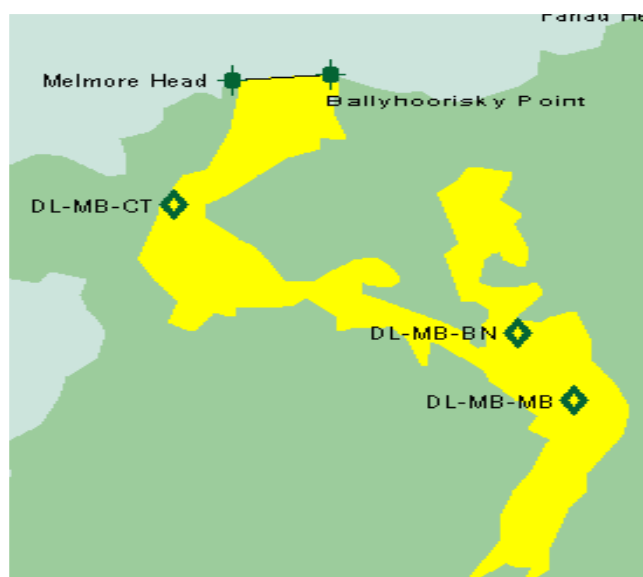
Sample Points:

Location Code	Location	Species	Longitude	Latitude
DL-LS-FC	Fahon Creek	<i>Mytilus edulis</i>	-7.46972	55.07694
DL-LS-WH	Whale Head	<i>Magallana gigas</i>	-7.475	55.0735

Note: Coordinates are expressed as decimalised longitude and latitude

Production Area: **DL-MB**

Location: **Mulroy Bay**



Production area is defined as area inside boundary line:

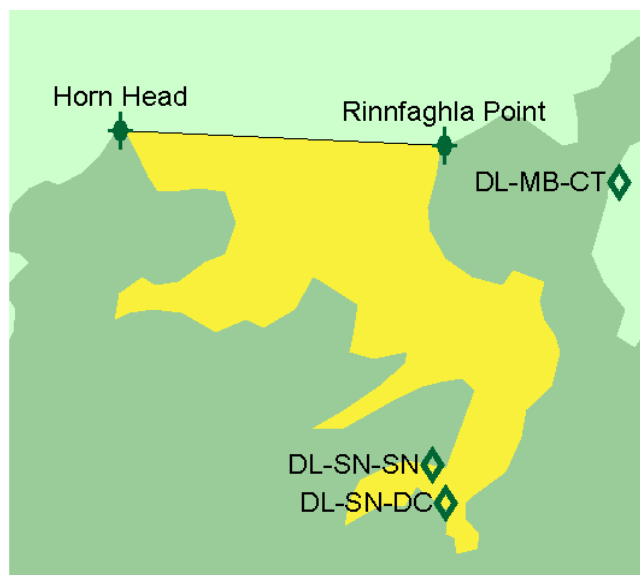
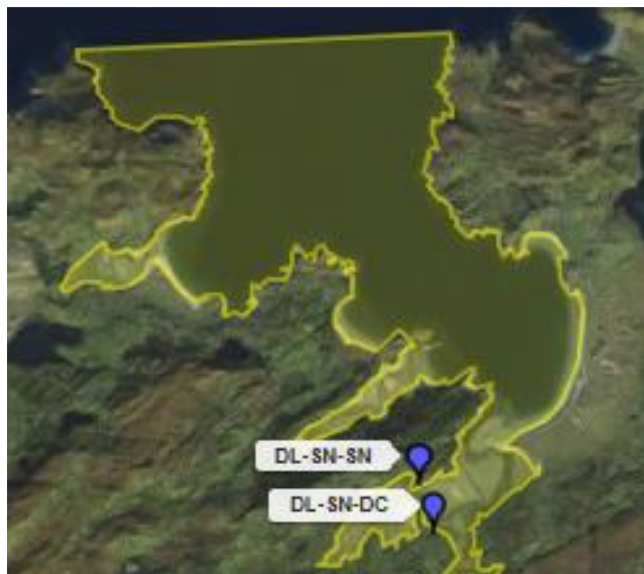
From Melmore Head to Ballyhoorisky Point as shown on chart, up to and including the mean high water mark and coordinates defined as:

Name	Longitude	Latitude
Melmore Head	-7.78751	55.25321
Ballyhoorisky Point	-7.75764	55.25503

Sample Points:

Location Code	Location	Species	Longitude	Latitude
DL-MB-BN	Broadwater North	<i>Pecten maximus</i>	-7.70111	55.17472
DL-MB-CT	Carrigart	<i>Magallana gigas</i>	-7.80500	55.21444
DL-MB-MB	Mulroy Bay	<i>Mytilus edulis</i> <i>Magallana gigas</i>	-7.68389	55.15361

Note: Coordinates are expressed as decimalised longitude and latitude

Production Area: **DL-SN**Location: **Sheephaven****Production area is defined as area inside boundary line:**

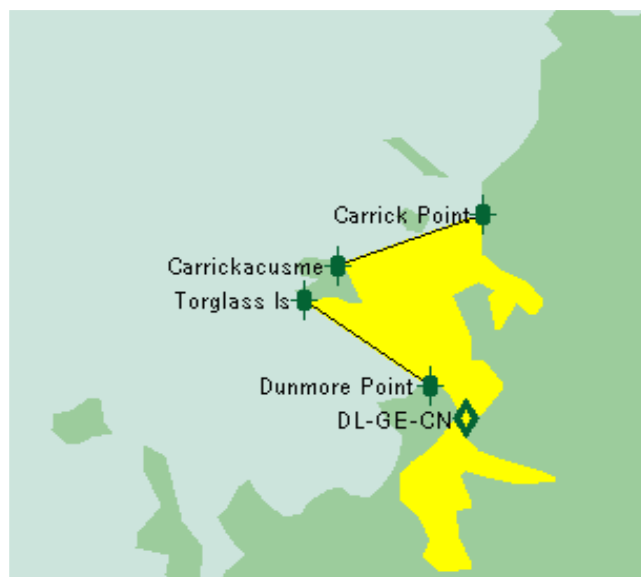
From Horn Head to Rinnfaghla Point as shown on chart, up to and including the mean high water mark and coordinates defined as:

Name	Longitude	Latitude
Horn Head	-7.98163	55.22686
Rinnfaghla Point	-7.86715	55.22322

Sample Points:

Location Code	Location	Species	Longitude	Latitude
DL-SN-SN	Sheephaven	<i>Magallana gigas</i>	-7.87139	55.14778
DL-SN-DC	Doe Castle	<i>Mytilus edulis</i>	-7.86672	55.13867

Note: Coordinates are expressed as decimalised longitude and latitude

Production Area: **DL-GE**Location: **Gweedore****Production area is defined as area inside boundary line:**

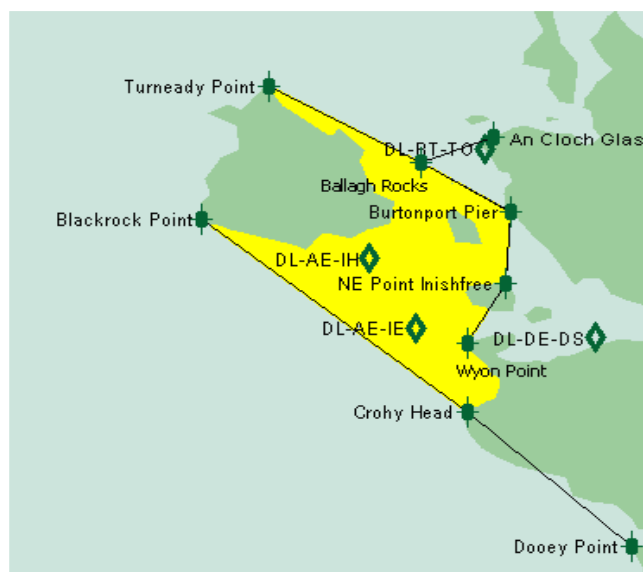
From Dunmore Point to Torglass Island and Carrick Point to Carrickacusme as shown on chart, up to and including the mean high water mark and coordinates defined as:

Name	Longitude	Latitude
Dunmore Point	-8.33361	55.06468
Torglass Island	-8.37628	55.08512
Carrick Point	-8.31583	55.10556
Carrickacusme	-8.36490	55.09330

Sample Points:

Location Code	Location	Species	Longitude	Latitude
DL-GE-CN	Carrickfin	<i>Magallana gigas</i> <i>Mytilus edulis</i>	-8.32167	55.05694

Note: Coordinates are expressed as decimalised longitude and latitude

Production Area: **DL-AE**Location: **Arranmore****Production area is defined as area inside boundary lines:**

From Turneady Point to Ballagh Rocks to Burtonport Pier to NE Point Inishfree to Wyon Point and Blackrock Point to Crohy Head as shown on chart, up to and including the mean high water mark and coordinates defined as:

Name	Longitude	Latitude
Turneady Point	-8.53769	55.01925
Ballagh Rocks	-8.47512	54.99608
Burtonport Pier	-8.43814	54.98109
NE Point Inishfree	-8.44027	54.95928
Wyon Point	-8.45592	54.94111
Crohy Head	-8.45592	54.92021
Blackrock Point	-8.56542	54.97881

Sample Points:

Location Code	Location	Species	Longitude	Latitude
DL-AE-IE	Illancrone	<i>Mytilus edulis</i>	-8.47694	54.94583
DL-AE-IH	Inishkeeragh	<i>Mytilus edulis</i>	-8.49639	54.96694

Note: Coordinates are expressed as decimalised longitude and latitude

Production Area: **DL-DE**Location: **Dungloe****Production area is defined as area inside boundary line:**

From Burtoport Pier to NE Point Inishfree to Wyon Point as shown on chart, up to and including the mean high water mark and coordinates defined as:

Name	Longitude	Latitude
Burtonport Pier	-8.43814	54.98109
NE Point Inishfree	-8.44027	54.95928
Wyon Point	-8.45592	54.94111

Sample Points:

Location Code	Location	Species	Longitude	Latitude
DL-DE-DS	Dungloe South	<i>Magallana gigas</i>	-8.40306	54.94278

Note: Coordinates are expressed as decimalised longitude and latitude

Production Area: **DL-TE**

Location: **Tra Eanach**



Production area is defined as area inside boundary line:

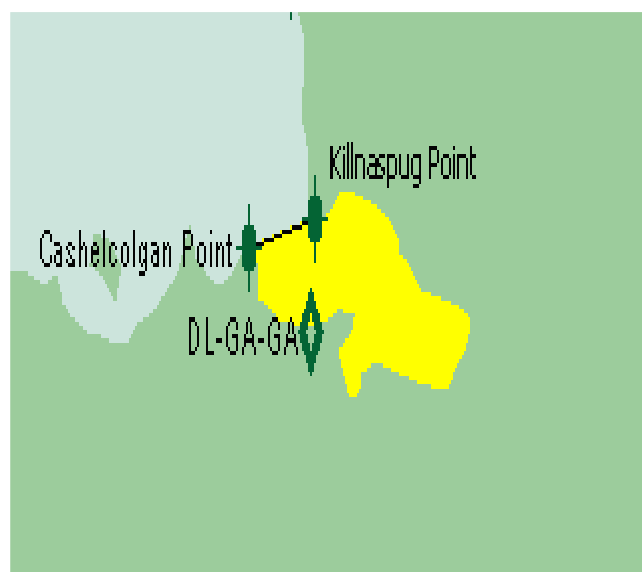
From Crohy Point to Dooley Point as shown on chart, up to and including the mean high water mark and coordinates defined as:

Name	Longitude	Latitude
Crohy Head	-8.45592	54.92021
Dooley Point	-8.38836	54.87932

Sample Points:

Location Code	Location	Species	Longitude	Latitude
DL-TE-TE	Tra Eanach	<i>Magallana gigas</i>	-8.33889	54.88444

Note: Coordinates are expressed as decimalised longitude and latitude

Production Area: **DL-GA**Location: **Gweebarra****Production area is defined as area inside boundary line:**

From Cashelcolgan Point to Killaspug Point as shown on chart, up to and including the mean high water mark and coordinates defined as:

Name	Longitude	Latitude
Cashelcolgan Point	-8.40330	54.84980
Killaspug Point	-8.37983	54.85298

Sample Points:

Location Code	Location	Species	Longitude	Latitude
DL-GA-GA	Gweebarra	<i>Magallana gigas</i>	-8.38139	54.84056

Note: Coordinates are expressed as decimalised longitude and latitude

Production Area: **DL-LM**

Location: **Loughras Mor**



Production area is defined as area inside boundary line:

From Rossbeg to Loughras Point as shown on chart, up to and including the mean high water mark and coordinates defined as:

Name	Longitude	Latitude
Rossbeg	-8.52489	54.81073
Loughras Point	-8.55049	54.78619

Sample Points:

Location Code	Location	Species	Longitude	Latitude
DL-LM-LM	Loughras Mor	<i>Magallana gigas</i>	-8.43194	54.76889

Note: Coordinates are expressed as decimalised longitude and latitude

Production Area: **DL-LB**

Location: **Loughras Beag**



Production area is defined as area inside boundary line:

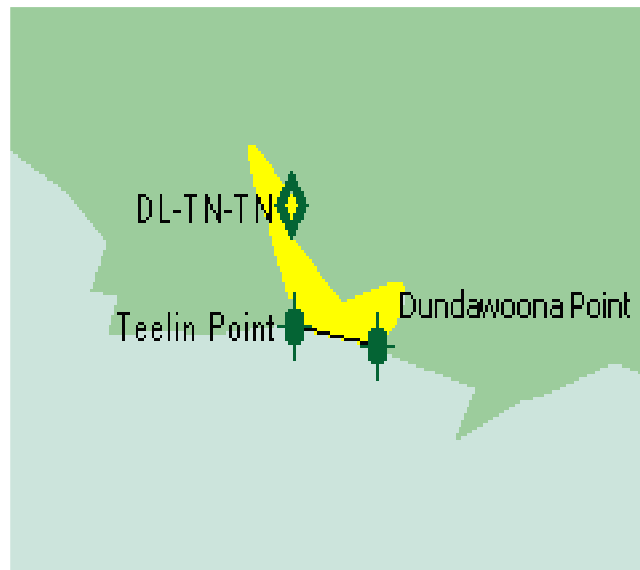
From Loughras Point to Gull Island as shown on chart, up to and including the mean high water mark and coordinates defined as:

Name	Longitude	Latitude
Loughras Point	-8.55049	54.78619
Gull Island	-8.60311	54.78120

Sample Points:

Location Code	Location	Species	Longitude	Latitude
DL-LB-LB	Loughras Beag	<i>Magallana gigas</i>	-8.47750	54.76083

Note: Coordinates are expressed as decimalised longitude and latitude

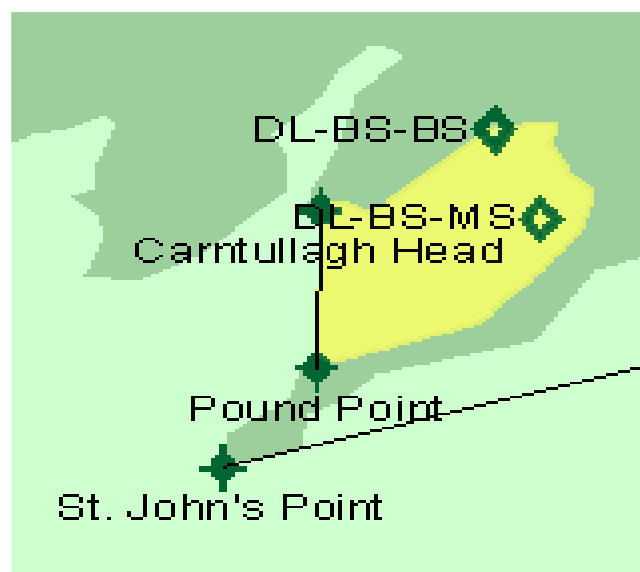
Production Area: **DL-TN**Location: **Teelin****Production area is defined as area inside boundary line:**

From Teelin Point to Dundawoona Point as shown on chart, up to and including the mean high water mark and coordinates defined as:

Name	Longitude	Latitude
Teelin Point	-8.63582	54.62129
Dundawoona Point	-8.61377	54.61856

Sample Points:

Location Code	Location	Species	Longitude	Latitude
DL-TN-TN	Teelin	<i>Magallana gigas</i>	-8.63667	54.63806

Production Area: **DL-BS**Location: **Bruckless****Production area is defined as area inside boundary line:**

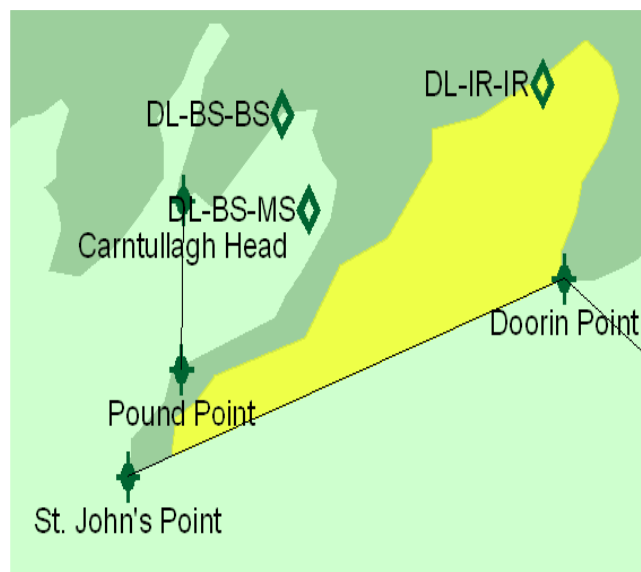
From Carntullagh Head to Pound Point as shown on chart, up to and including the mean high water mark and coordinates defined as:

Name	Longitude	Latitude
Carntullagh Head	-8.43814	54.61493
Pound Point	-8.43885	54.58540

Sample Points:

Location Code	Location	Species	Longitude	Latitude
DL-BS-BS	Bruckless	<i>Magallana gigas</i> <i>Mytilus edulis</i> <i>Pecten maximus</i>	-8.40194	54.63000
DL-BS-MS	McSwynes Bay	<i>Mytilus edulis</i> <i>Magallana gigas</i>	-8.39222	54.61333

Note: Coordinates are expressed as decimalised longitude and latitude

Production Area: **DL-IR**Location: **Inver****Production area is defined as area inside boundary line:**

From Doorin Point to St. John's Point as shown on chart, up to and including the mean high water mark and coordinates defined as:

Name	Longitude	Latitude
Doorin Point	-8.29877	54.60130
St. John's Point	-8.45833	54.56677

Sample Points:

Location Code	Location	Species	Longitude	Latitude
DL-IR-IR	Inver Bay	<i>Mytilus edulis</i>	-8.30667	54.63533

Note: Coordinates are expressed as decimalised longitude and latitude

Production Area: **DL-DH**

Location: **Donegal Harbour**



Production area is defined as area inside boundary line:

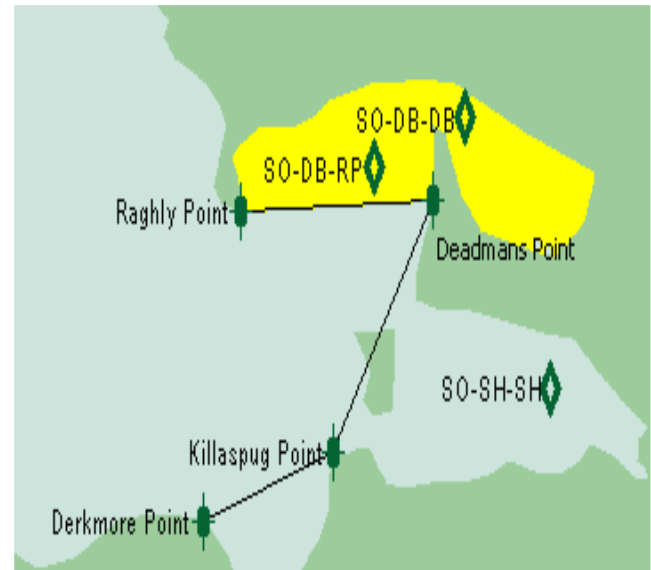
From Doorin Point to Rossnowlagh Point as shown on chart, up to and including the mean high water mark and coordinates defined as:

Name	Longitude	Latitude
Doorin Point	-8.29877	54.60130
Rossnowlagh Point	-8.22126	54.56677

Sample Points:

Location Code	Location	Species	Longitude	Latitude
DL-DH-DH	Donegal Harbour	<i>Pecten maximus</i>	-8.19917	54.62194
DL-DH-LC	Laghy Channel	<i>Magallana gigas</i>	-8.13583	54.62083
DL-DH-MS	Mountcharles	<i>Magallana gigas</i> <i>Mytilus edulis</i>	-8.17528	54.63222

Note: Coordinates are expressed as decimalised longitude and latitude

Production Area: **SO-DB**Location: **Drumcliff Bay****Production area is defined as area inside boundary line:**

From Raghly Point to Deadmans Point as shown on chart, up to and including the mean high water mark and coordinates defined as:

Name	Longitude	Latitude
Raghly Point	-8.64577	54.32054
Deadmans Point	-8.56898	54.32236

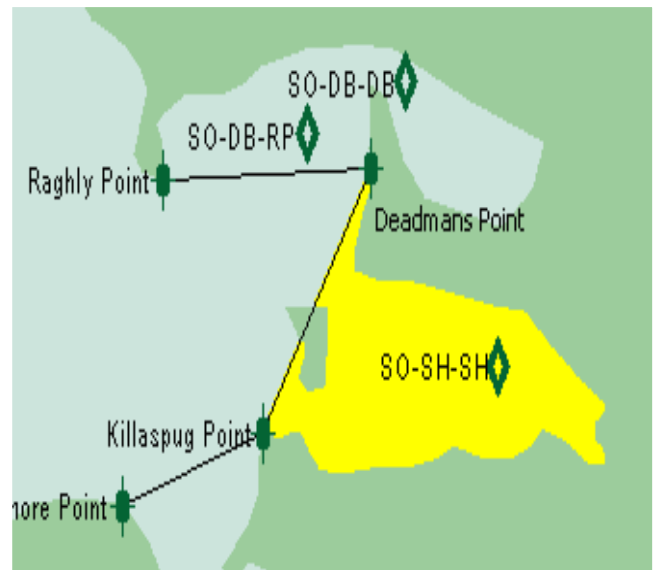
Sample Points:

Location Code	Location	Species	Longitude	Latitude
SO-DB-DB	Drumcliff Bay	<i>Magallana gigas</i> <i>Ruditapes philipinarum</i> <i>Mytilus edulis</i>	-8.55611	54.33583
SO-DB-RP	Rosses Point	<i>Pecten maximus</i>	-8.59278	54.32778

Note: Coordinates are expressed as decimalised longitude and latitude

Production Area: **SO-SH**

Location: **Sligo Harbour**



Production area is defined as area inside boundary line:

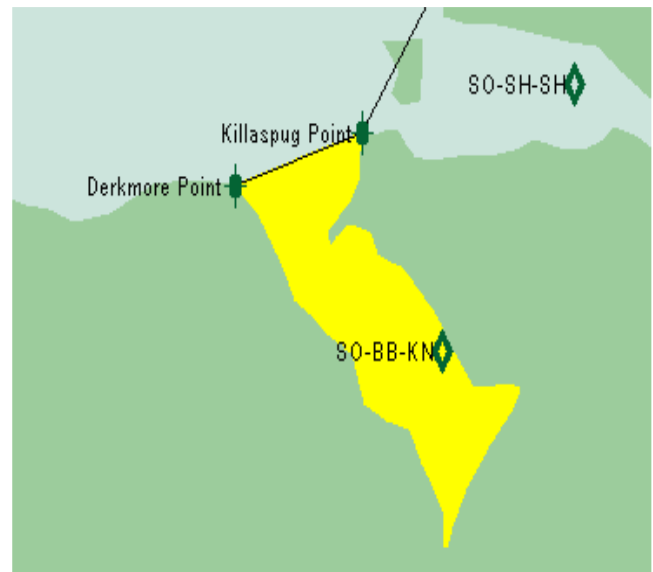
From Deadmans Point to Killaspug Point as shown on chart, up to and including the mean high water mark and coordinates defined as:

Name	Longitude	Latitude
Deadmans Point	-8.56898	54.32236
Killaspug Point	-8.60880	54.28102

Sample Points:

Location Code	Location	Species	Longitude	Latitude
SO-SH-SH	Sligo Harbour	<i>Mytilus edulis</i> <i>Magallana gigas</i> <i>Ruditapes philipinarum</i>	-8.52194	54.29167

Note: Coordinates are expressed as decimalised longitude and latitude

Production Area: **SO-BB**Location: **Ballysadare Bay****Production area is defined as area inside boundary line:**

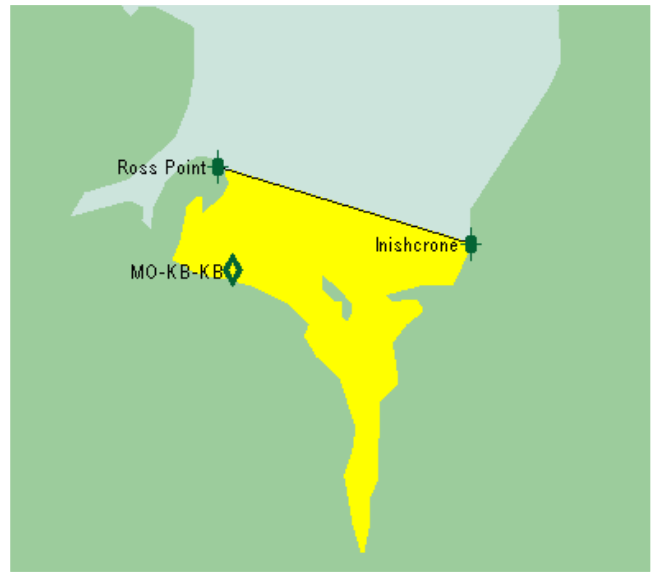
From Killaspug Point to Derkmore Point as shown on chart, up to and including the mean high water mark and coordinates defined as:

Name	Longitude	Latitude
Killaspug Point	-8.60880	54.28102
Derkmore Point	-8.66071	54.26966

Sample Points:

Location Code	Location	Species	Longitude	Latitude
SO-BB-KN	Kellystown	<i>Mytilus edulis</i> <i>Magallana gigas</i>	-8.57611	54.23444

Note: Coordinates are expressed as decimalised longitude and latitude

Production Area: **MO-KB**Location: **Killala Bay****Production area is defined as area inside boundary line:**

From Ross Point to Inishcrone as shown on chart, up to and including the mean high water mark and coordinates defined as:

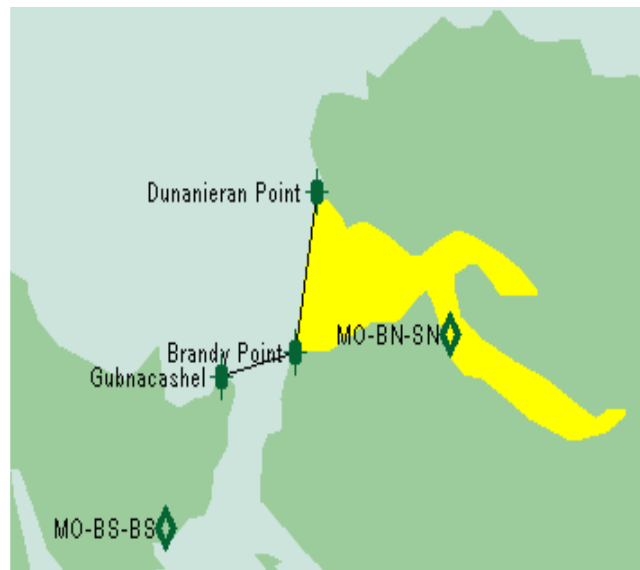
Name	Longitude	Latitude
Ross Point	-9.19614	54.24013
Inishcrone	-9.08664	54.21833

Sample Points:

Location Code	Location	Species	Longitude	Latitude
MO-KB-KB	Killala Bay	<i>Magallana gigas</i>	-9.18972	54.21083

Production Area: **MO-BN**

Location: **Broadhaven North**



Production area is defined as area inside boundary line:

From Dunanieran Point to Brandy Point as shown on chart, up to and including the mean high water mark and coordinates defined as:

Name	Longitude	Latitude
Dunanieran Point	-9.85531	54.30237
Brandy Point	-9.86384	54.26966

Sample Points:

Location Code	Location	Species	Longitude	Latitude
MO-BN-SN	Sruwaddacon	<i>Magallana gigas</i>	-9.80278	54.27333

Note: Coordinates are expressed as decimalised longitude and latitude

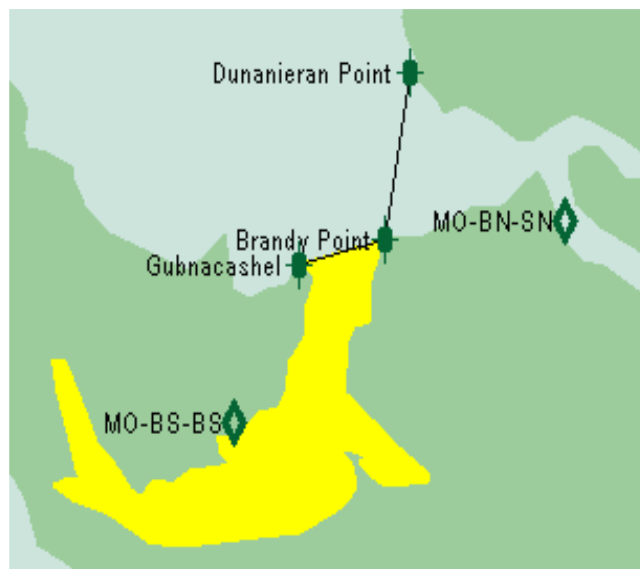
Production Area: **MO-IA**Location: **Iniskea Islands****Production area is defined as area inside boundary line:**

From South East Corner Iniskea South Island Point to Carrickalaveen Rock to Point A to Point B to Point C and bounded to the West by the Iniskea Islands as shown on the chart, up to and including the mean high water mark and coordinates defined as:

Name	Longitude	Latitude
South East Corner Iniskea South Island Point	54.103133	-10.2344
Carrickalaveen Rock	54.09595	-10.2321
Point A	54.086266	-10.2015
Point B	54.131933	-10.163783
Point C and bounded to the West by the Iniskea Islands	54.129316	-10.181533

Sample Points:

Location Code	Location	Species	Longitude	Latitude
MO-IA-IA	Iniskea Islands	<i>Ensis magnus</i>	54.12280	-10.19620

Production Area: **MO-BS**Location: **Broadhaven South**

Production area is defined as area inside boundary line:

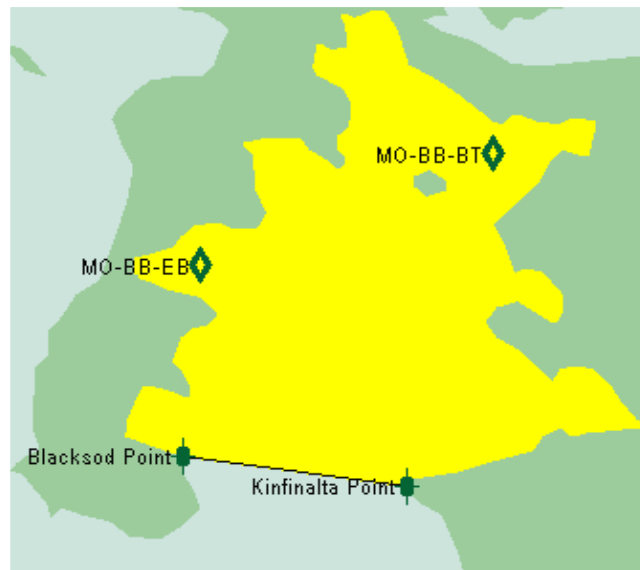
From Brandy Point to Gubnacashel as shown on chart, up to and including the mean high water mark and coordinates defined as:

Name	Longitude	Latitude
Brandy Point	-9.86384	54.26966
Gubnacashel	-9.89300	54.26467

Sample Points:

Location Code	Location	Species	Longitude	Latitude
MO-BS-BS	Broadhaven South	<i>Magallana gigas</i> <i>Ruditapes philipinarum</i>	-9.91500	54.23389

Note: Coordinates are expressed as decimalised longitude and latitude

Production Area: **MO-BB**Location: **Blacksod Bay**

Production area is defined as area inside boundary line:

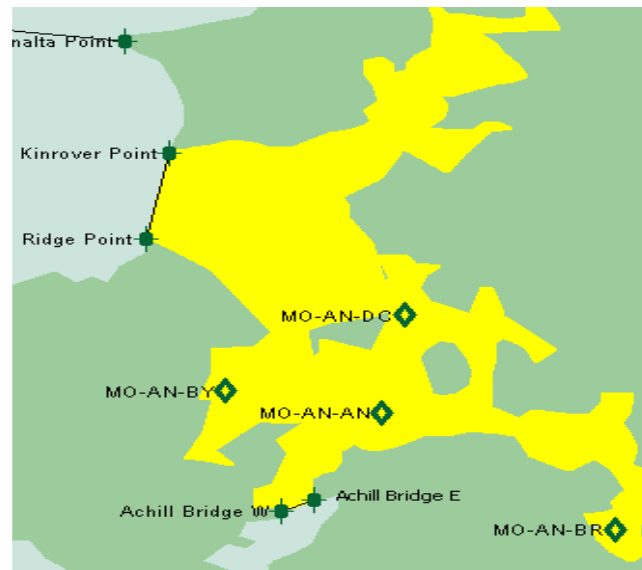
From Blacksod Point to Kinfinalta Point as shown on chart, up to and including the mean high water mark and coordinates defined as:

Name	Longitude	Latitude
Blacksod Point	-10.06508	54.10975
Kinfinalta Point	-9.98188	54.10203

Sample Points:

Location Code	Location	Species	Longitude	Latitude
MO-BB-BT	Belmullet	<i>Magallana gigas</i>	-9.94972	54.18722
MO-BB-EB	Elly Bay	<i>Ostrea edulis</i>	-10.05861	54.15861

Note: Coordinates are expressed as decimalised longitude and latitude

Production Area: **MO-AN**Location: **Achill North****Production area is defined as area inside boundary lines:**

From Kinrover Point to Ridge Point and Achill Bridge East to Achill Bridge West as shown on chart, up to and including the mean high water mark and coordinates defined as:

Name	Longitude	Latitude
Kinrover Point	-9.96553	54.06114
Ridge Point	-9.97406	54.02980
Achill Bridge East	-9.91220	53.93439
Achill Bridge West	-9.92428	53.93031

Sample Points:

Location Code	Location	Species	Longitude	Latitude
MO-AN-AN	Achill North	<i>Ostrea edulis</i>	-9.88722	53.96639
MO-AN-BR	Bealacragher	<i>Mytilus edulis</i>	-9.80139	53.92361
MO-AN-BY	Bunacurry	<i>Magallana gigas</i> <i>Littorina littorea</i>	-9.94500	53.97417
MO-AN-DC	Dooriel Creek	<i>Magallana gigas</i> <i>Ostrea edulis</i>	-9.87889	54.00194

Note: Coordinates are expressed as decimalised longitude and latitude

Production Area: **MO-AS**Location: **Achill South****Production area is defined as area inside boundary line:**

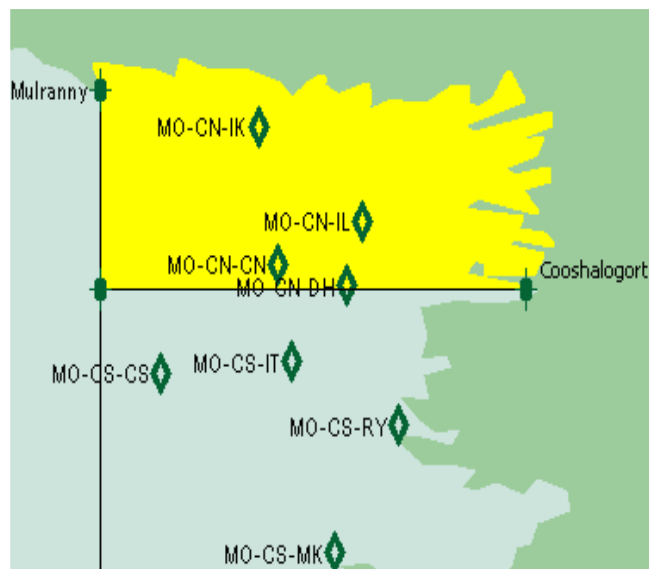
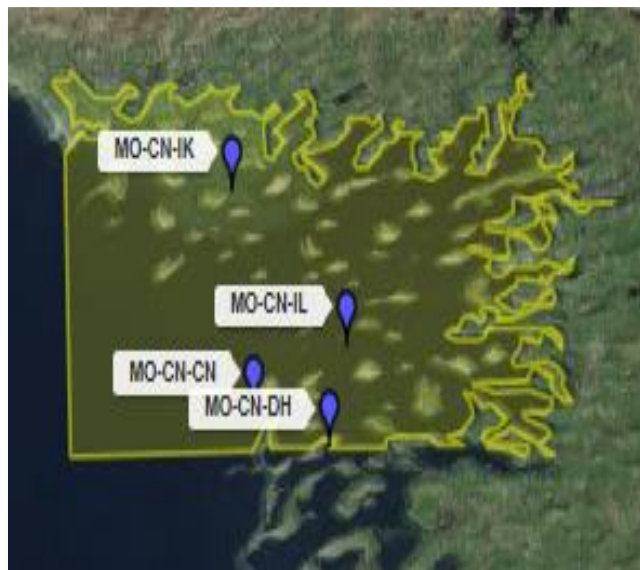
From Achill Bridge East to Achill Bridge West and Bollinglanna to Southernmost Point Achillbeg as shown on chart, up to and including the mean high water mark and coordinates defined as:

Name	Longitude	Latitude
Achill Bridge East	-9.91220	53.93439
Achill Bridge West	-9.92428	53.93031
Bollinglanna	-9.90153	53.86352
Southernmost Point Achillbeg	-9.94917	53.85944

Sample Points:

Location Code	Location	Species	Longitude	Latitude
MO-AS-CN	Corraun	<i>Magallana gigas</i>	-9.93722	53.87972

Note: Coordinates are expressed as decimalised longitude and latitude

Production Area: **MO-CN**Location: **Clew Bay North****Production area is defined as area inside boundary line:**

From Mulranny Point due south to a point due west of Cooshalogort and then east to Cooshalogort as shown on chart, up to and including the mean high water mark and coordinates defined as:

Name	Longitude	Latitude
Mulranny	-9.74296	53.89351
Point west of Cooshalogort	-9.74296	53.84944
Cooshalogort	-9.56732	53.84944

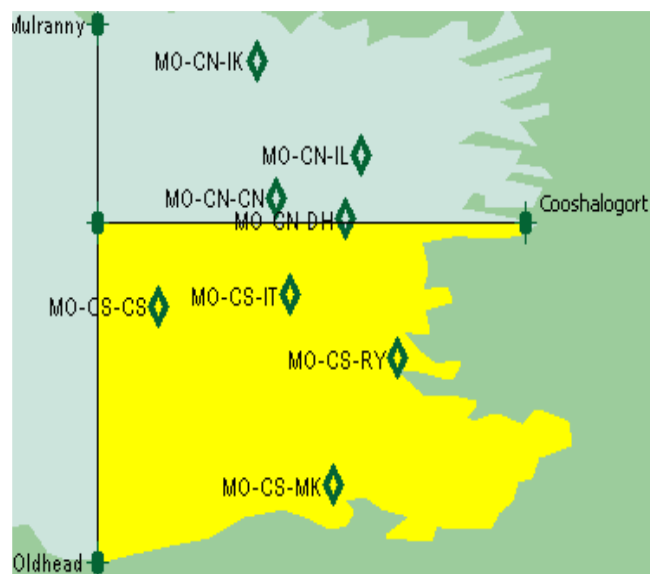
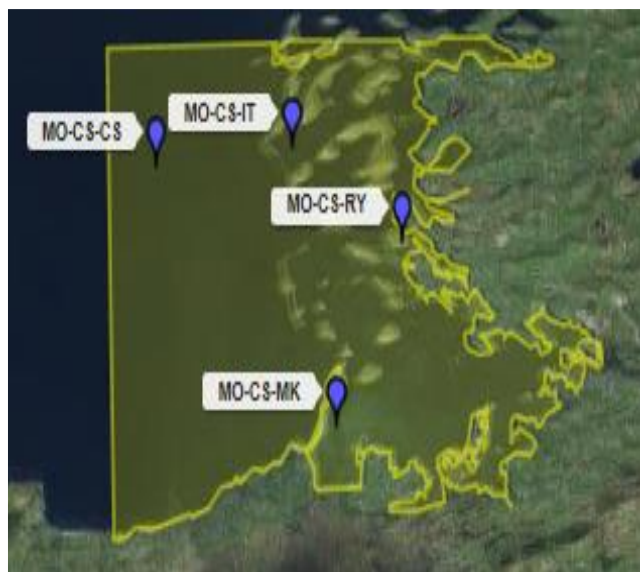
Sample Points:

Location Code	Location	Species	Longitude	Latitude
MO-CN-CN	Clew Bay North	<i>Pecten maximus</i>	-9.66944	53.85500
MO-CN-DH	Derrinish	<i>Ostrea edulis</i>	-9.64111	53.85028
MO-CN-IK	Inisquirk	<i>Magallana gigas</i>	-9.67750	53.88556
MO-CN-IL	Inishlaughill	<i>Mytilus edulis</i>	-9.63500	53.86444

Note: Coordinates are expressed as decimalised longitude and latitude

Production Area: **MO-CS**

Location: **Clew Bay South**



Production area is defined as area inside boundary line:

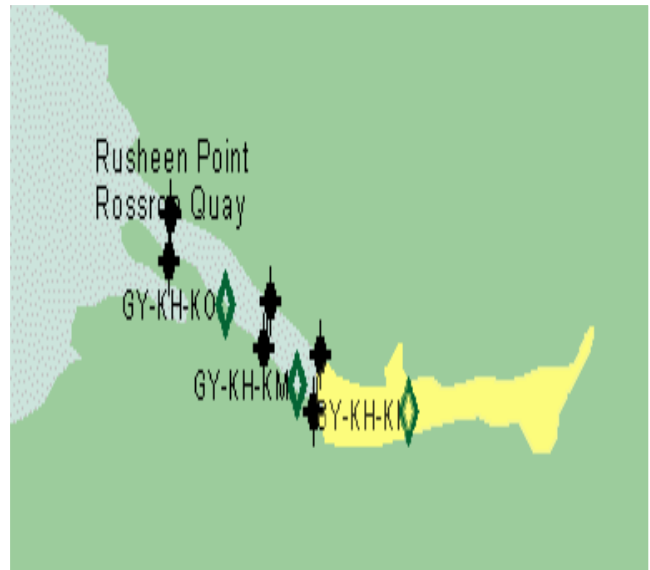
From Oldhead due north to a point due west of Cooshalogort and then east to Cooshalogort as shown on chart, up to and including the mean high water mark and coordinates defined as:

Name	Longitude	Latitude
Cooshalogort	-9.56732	53.84944
Point west of Cooshalogort	-9.74296	53.84944
Oldhead	-9.74296	53.77403

Sample Points:

Location Code	Location	Species	Longitude	Latitude
MO-CS-CS	Clew Bay South	<i>Pecten maximus</i>	-9.71833	53.83083
MO-CS-IT	Inisgort	<i>Pecten maximus</i>	-9.66417	53.83333
MO-CS-MK	Murrisk	<i>Magallana gigas</i>	-9.64611	53.79111
MO-CS-RY	Rosmoney	<i>Magallana gigas</i>	-9.62000	53.81944

Note: Coordinates are expressed as decimalised longitude and latitude

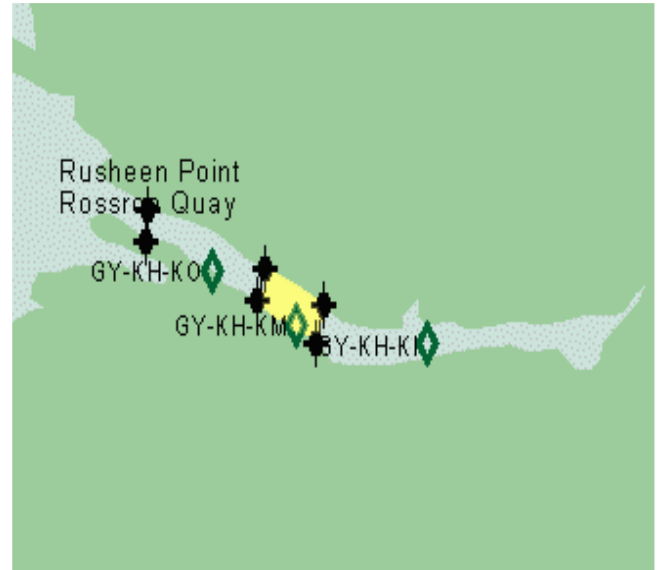
Production Area: **GY-KI**Location: **Killary Harbour Inner****Production area is defined as area inside boundary line:**

From points at the bend in Killary Harbour as shown on chart, east, up to and including the mean high water mark and coordinates defined as:

Name	Longitude	Latitude
Bend North	-9.79273	53.60776
Bend South	-9.79558	53.60003

Sample Points:

Location Code	Location	Species	Longitude	Latitude
GY-KI-KI	Killary Harbour Inner	<i>Mytilus edulis</i>	-9.75528	53.60000

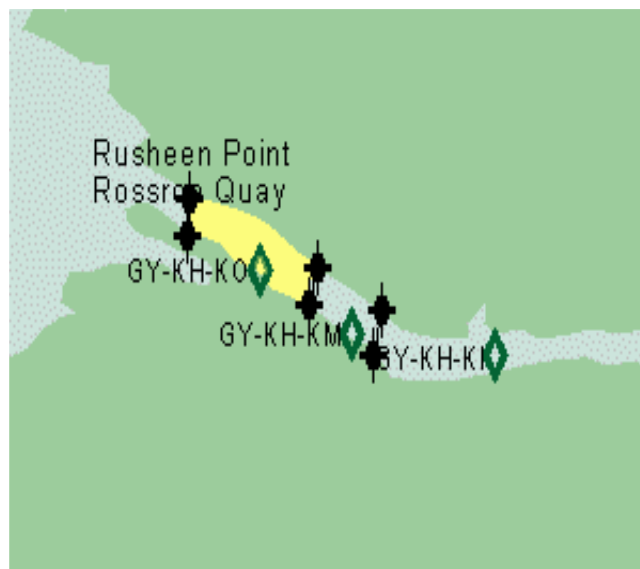
Production Area: **GY-KM**Location: **Killary Harbour Middle****Production area is defined as area inside boundary line:**

From points at the bend in Killary Harbour to a line defined by points further west as shown on chart, up to and including the mean high water mark and coordinates defined as:

Name	Longitude	Latitude
Bend North	-9.79273	53.60776
Bend South	-9.79558	53.60003
Killary North	-9.81407	53.61503
Killary South	-9.81691	53.60867

Sample Points:

Location Code	Location	Species	Longitude	Latitude
GY-KM-KM	Killary Harbour Middle	<i>Mytilus edulis</i>	-9.80278	53.60389

Production Area: **GY-KO**Location: **Killary Harbour Outer****Production area is defined as area inside boundary line:**

From Rusheen Point to Rossroe Quay east to a line defined by points shown on chart, up to and including the mean high water mark and coordinates defined as:

Name	Longitude	Latitude
Rossroe Quay	-9.85744	53.62048
Rusheen Point	-9.85673	53.62684
Killary North	-9.81407	53.61503
Killary South	-9.81691	53.60867

Sample Points:

Location Code	Location	Species	Longitude	Latitude
GY-KO-KO	Killary Harbour Outer	<i>Mytilus edulis</i>	-9.83306	53.61472

Production Area: **GY-CG**Location: **Cleggan****Production area is defined as area inside boundary line:**

From Cleggan Point to Cuddoo Rock to Aughrus Point as shown on chart, up to and including the mean high water mark and coordinates defined as:

Name	Longitude	Latitude
Aughrus Point	-10.198	53.54506
Cuddoo Rock	-10.1973	53.57051
Cleggan Point	-10.12410	53.57732

Sample Points:

Location Code	Location	Species	Longitude	Latitude
GY-CG	Aughrus	<i>Magallana gigas</i>	-10.1781	53.5596

Note: Coordinates are expressed as decimalised longitude and latitude

Production Area: **GY-SB**

Location: **Streamstown Bay**



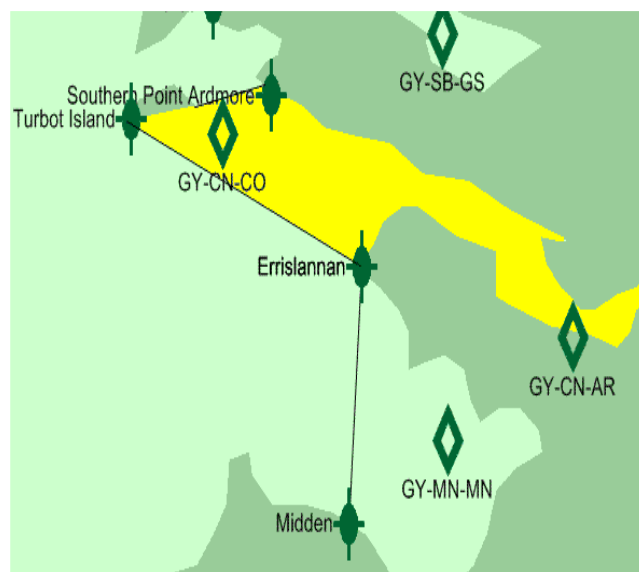
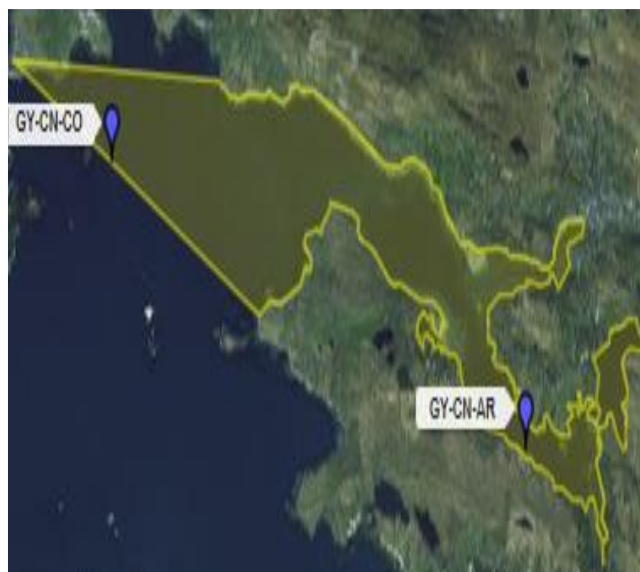
Production area is defined as area inside boundary line:

From Gubarusheen to Omey House Ruins to Ardroe as shown on chart, up to and including the mean high water mark and coordinates defined as:

Name	Longitude	Latitude
Gubarusheen	-10.12552	53.52326
Omey House Ruins	-10.15325	53.52644
Ardroe	-10.13618	53.51281

Sample Points:

Location Code	Location	Species	Longitude	Latitude
GY-SB-GS	Gubbaros	<i>Magallana gigas</i>	-10.07139	53.50917

Production Area: **GY-CN**Location: **Clifden****Production area is defined as area inside boundary line:**

From Turbot Island West to Errislannan, and from Turbot Island East to Southern Point Ardmore as shown on chart, up to and including the mean high water mark and coordinates defined as:

Name	Longitude	Latitude
Turbot Island West	-10.16009	53.49843
Turbot Island East	-10.14096	53.50018
Southern Point Ardmore	-10.11983	53.50145
Errislannan	-10.09423	53.48055

Sample Points:

Location Code	Location	Species	Longitude	Latitude
GY-CN-AR	Ardbear	<i>Mytilus edulis</i> <i>Spisula solida</i> <i>Dosina exoleta</i> <i>Ensis magnus</i> <i>Magallana gigas</i> <i>Glycymeris glycymeris</i>	-10.03472	53.47194
GY-CN-CO	Cliffden Outer	<i>Spisula solida</i> <i>Ensis magnus</i>	-10.03472	53.47194

Note: Coordinates are expressed as decimalised longitude and latitude

Production Area: **GY-MN**

Location: **Mannin Bay**



Production area is defined as area inside boundary line:

From Errislannan to Midden as shown on chart, up to and including the mean high water mark and coordinates defined as:

Name	Longitude	Latitude
Errislannan	-10.09423	53.48055
Midden	-10.09779	53.44921

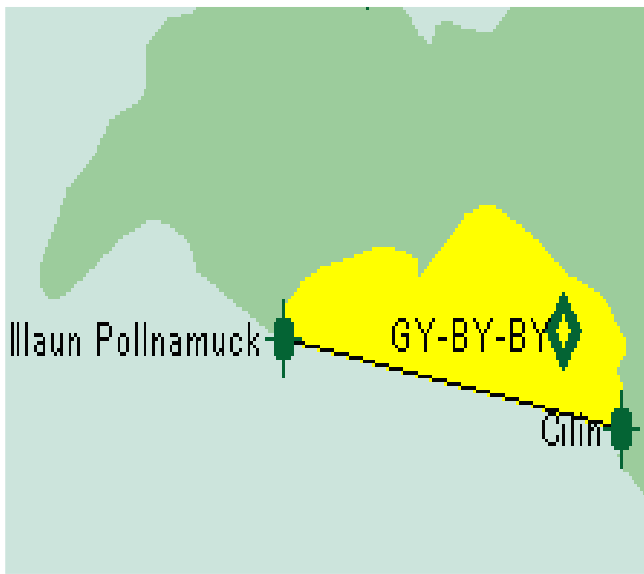
Sample Points:

Location Code	Location	Species	Longitude	Latitude
GY-MN-MN	Mannin	<i>Magallana gigas</i>	-10.07000	53.45944

Note: Coordinates are expressed as decimalised longitude and latitude

Production Area: **GY-BY**

Location: **Ballyconneely**



Production area is defined as area inside boundary line:

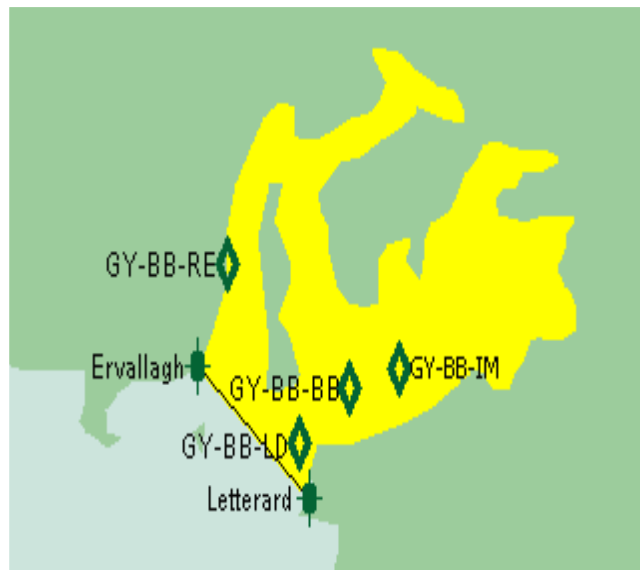
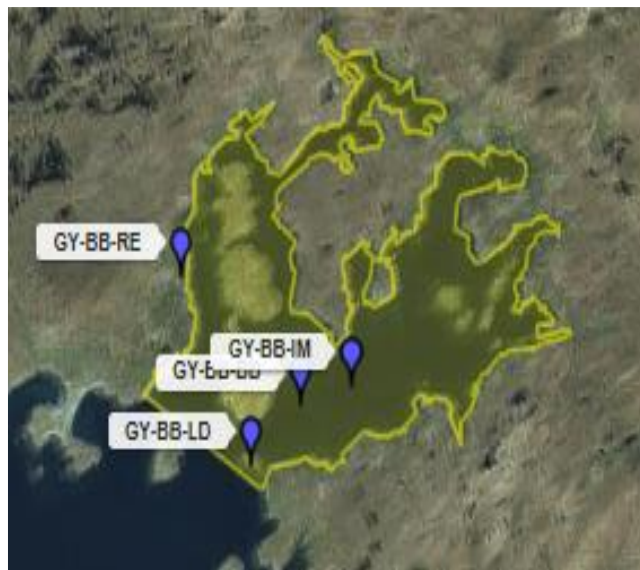
From Illaun Pollnamuck to Cilin as shown on chart, up to and including the mean high water mark and coordinates defined as:

Name	Longitude	Latitude
Illaun Pollnamuck	-10.11841	53.40469
Cilin	-10.03521	53.39378

Sample Points:

Location Code	Location	Species	Longitude	Latitude
GY-BY-BY	Ballyconneely	<i>Magallana gigas</i>	-10.04972	53.40556

Note: Coordinates are expressed as decimalised longitude and latitude

Production Area: **GY-BB**Location: **Bertraghboy**

Production area is defined as area inside boundary line:

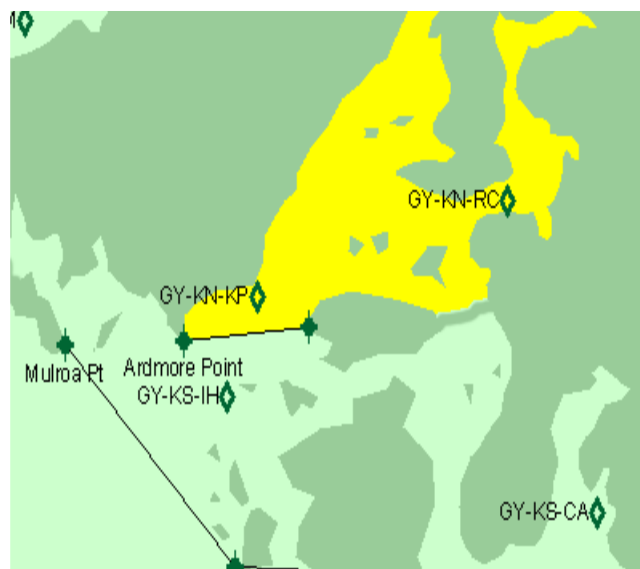
From as shown on chart, up to and including the mean high water mark and coordinates defined as:

Name	Longitude	Latitude
Ervallagh	-9.92713	53.38152
Letterard	-9.88731	53.35971

Sample Points:

Location Code	Location	Species	Longitude	Latitude
GY-BB-BB	Bertraghboy Bay	<i>Pecten maximus</i>	-9.87306	53.37806
GY-BB-IM	Illaungorm	<i>Ostrea edulis</i>	-9.85556	53.38111
GY-BB-LD	Letterard	<i>Magallana gigas</i>	-9.89111	53.36861
GY-BB-RE	Roundstone	<i>Magallana gigas</i>	-9.91667	53.39833

Note: Coordinates are expressed as decimalised longitude and latitude

Production Area: **GY-KN**Location: **Kilkieran North****Production area is defined as area inside boundary line:**

From Ardmore Point to Lettermore as shown on chart, up to and including the mean high water mark and coordinates defined as:

Name	Longitude	Latitude
Ardmore Point	-9.77140	53.29384
Lettermore	-9.70456	53.29747

Sample Points:

Location Code	Location	Species	Longitude	Latitude
GY-KN-KP	Kilkieran Point	<i>Pecten maximus</i> <i>Ensis siliqua</i>	-9.73194	53.30556
GY-KN-RC	Rosmuc	<i>Ostrea edulis</i>	-9.59861	53.33194

Note: Coordinates are expressed as decimalised longitude and latitude

Production Area: **GY-KS**Location: **Kilkieran South****Production area is defined as area inside boundary line:**

From Ardmore Point to Lettermore and from Mulroa Point to Golam to Cloghmore Point as shown on chart, up to and including the mean high water mark and coordinates defined as:

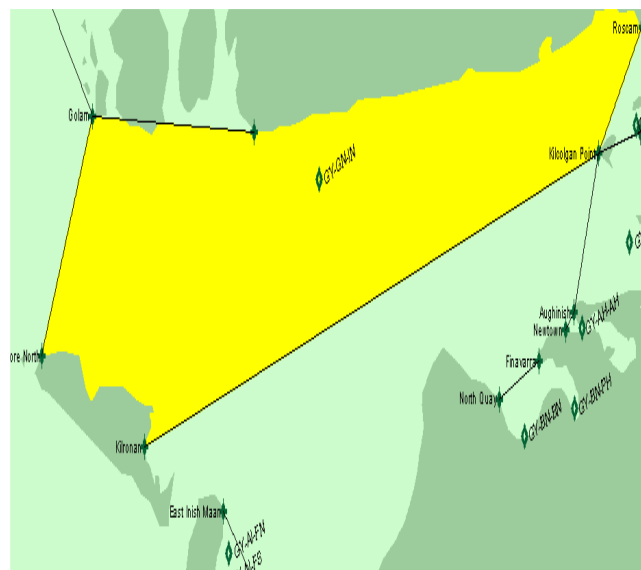
Name	Longitude	Latitude
Ardmore Point	-9.77140	53.29384
Lettermore	-9.70456	53.29747
Mulroa Point	-9.83469	53.29248
Golam	-9.74367	53.23206
Cloghmore Point	-9.52039	53.22660

Sample Points:

Location Code	Location	Species	Longitude	Latitude
GY-KS-IH	Illauneragh	<i>Pecten maximus</i> <i>Mytilus edulis</i>	-9.74806	53.27833
GY-KS-CA	Cashla	<i>Magallana gigas</i> <i>Haliotis discus hannai</i>	-9.55083	53.24698

Production Area: **GY-GN**

Location: **Galway Bay North**



Production area is defined as area inside boundary line:

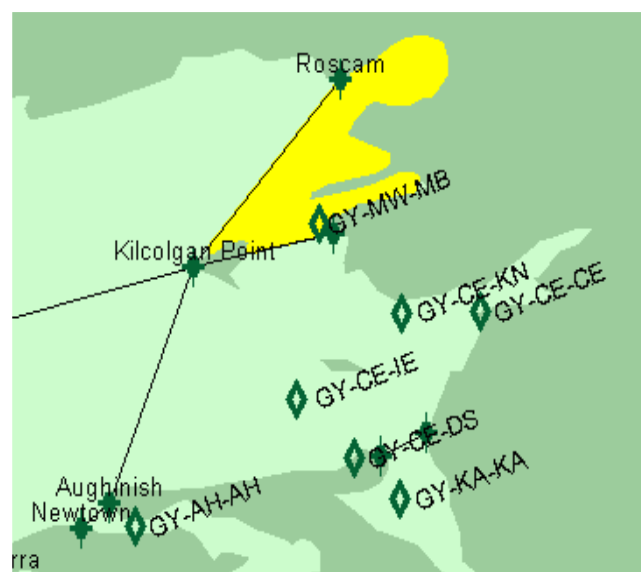
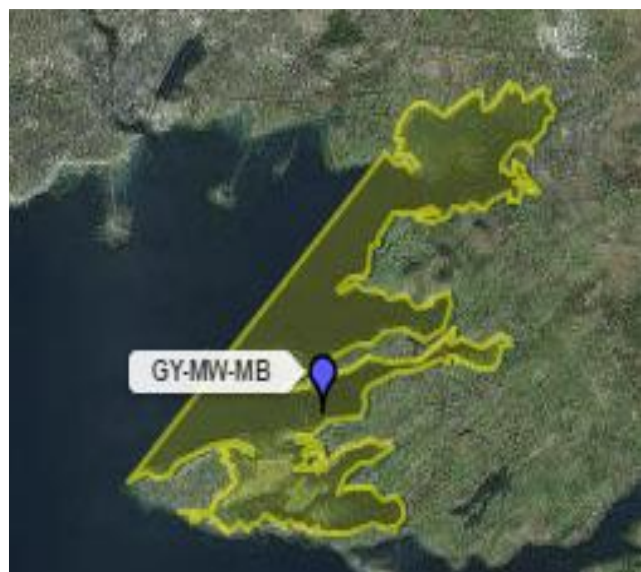
From Ardmore Point to Lettermore and from Mulroa Point to Golam to Cloghmore Point as shown on chart, up to and including the mean high water mark and coordinates defined as:

Name	Longitude	Latitude
Cloghmore Point	-9.52039	53.22660
Golam	-9.74367	53.23206
Inishmore North	-9.81335	53.14892
Kilronan	-9.6718	53.11712
Kilcolgan Point	-9.0432	53.2188
Roscam	-8.9835	53.2624

Sample Points:

Location Code	Location	Species	Longitude	Latitude
GY-GN-IN	Inverin	<i>Mytilus edulis</i>	-9.43	53.21

Note: Coordinates are expressed as decimalised longitude and latitude

Production Area: **GY-MW**Location: **Mweeloon Bay**

Production area is defined as area inside boundary line:

From Roscam to Kilcolgan Point to Mweeloon Point as shown on chart, up to and including the mean high water mark and coordinates defined as:

Name	Longitude	Latitude
Roscam	-8.98353	53.26249
Kilcolgan Point	-9.04326	53.21888
Mweeloon Point	-8.98638	53.22660

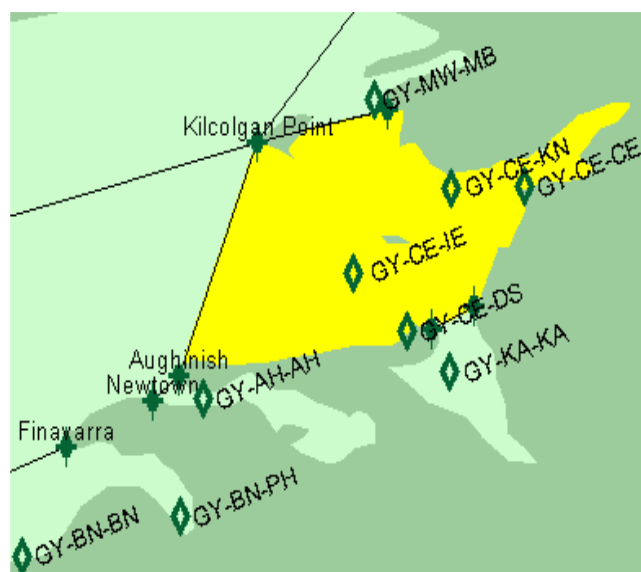
Sample Points:

Location Code	Location	Species	Longitude	Latitude
GY-MW-MB	Mweeloon Bay	<i>Magallana gigas</i>	-8.99222	53.22889

Note: Coordinates are expressed as decimalised longitude and latitude

Production Area: **GY-CE**

Location: **Clarinbridge**



Production area is defined as area inside boundary line:

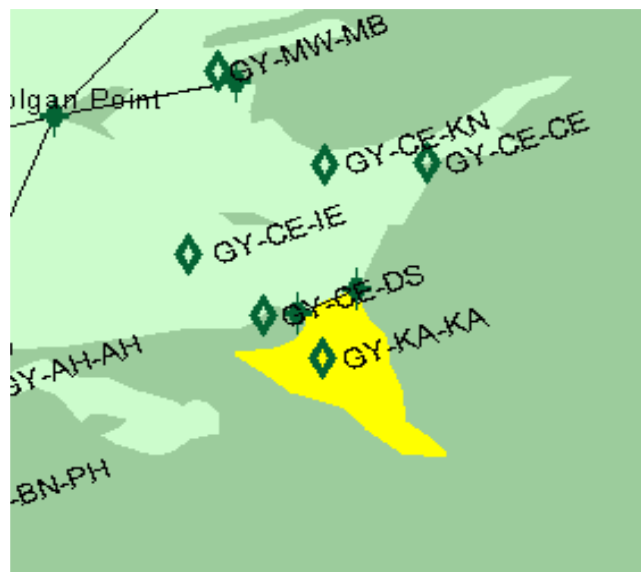
From Mweeloon Point to Kilcolgan Point to Doorus to Knockpreghaun as shown on chart, up to and including the mean high water mark and coordinates defined as:

Name	Longitude	Latitude
Mweeloon Point	-8.98638	53.22660
Kilcolgan Point	-9.04326	53.21888
Aughinish	-9.07739	53.16391
Doorus	-8.96718	53.17482
Knockpreghaun	-8.94869	53.18027

Sample Points:

Location Code	Location	Species	Longitude	Latitude
GY-CE-CE	Clarinbridge	<i>Ostrea edulis</i>	-8.92694	53.20833
GY-CE-KN	Killeenaran	<i>Magallana gigas</i> <i>Mytilus edulis</i> <i>Patella vulgata</i>	-8.95833	53.20806
GY-CE-IE	Island eddy	<i>Spisula solida</i>	-9.0013	53.1879
GY-CE-DS	Doorus	<i>Magallana gigas</i>	-8.97784	53.174

Note: Coordinates are expressed as decimalised longitude and latitude

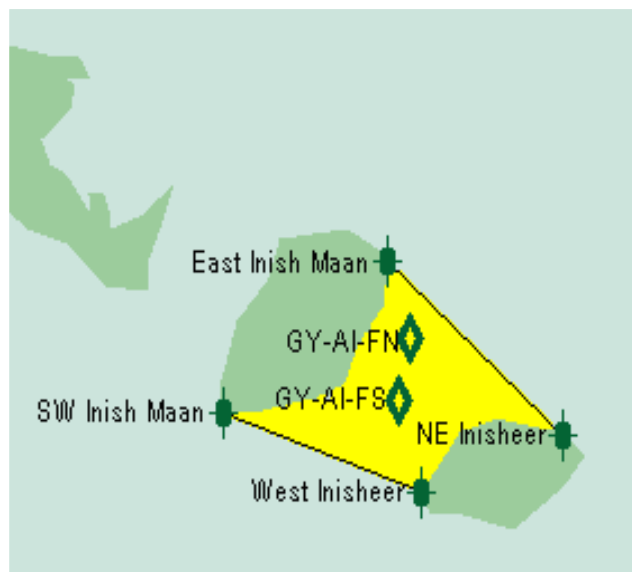
Production Area: **GY-KA**Location: **Kinvarra****Production area is defined as area inside boundary line:**

From Doorus to Knockpreghaun as shown on chart, up to and including the mean high water mark and coordinates defined as:

Name	Longitude	Latitude
Doorus	-8.96718	53.17482
Knockpreghaun	-8.94869	53.18027

Sample Points:

Location Code	Location	Species	Longitude	Latitude
GY-KA-KA	Kinvarra	<i>Mytilus edulis</i>	-8.95917	53.16472

Production Area: **GY-AI**Location: **Aran Islands****Production area is defined as area inside boundary line:**

From SouthWest Inishmaan to West Inisheer and East Inishmaan to North East Inisheer as shown on chart, up to and including the mean high water mark and coordinates defined as:

Name	Longitude	Latitude
SouthWest Inish Maan	-9.61426	53.06715
West Inisheer	-9.55168	53.05261
East Inish Maan	-9.56235	53.09486
NorthEast Inisheer	-9.50688	53.06306

Sample Points:

Location Code	Location	Species	Longitude	Latitude
GY-AI-FN	Foul Sound North	<i>Ensis siliqua</i>	-9.55528	53.08056
GY-AI-FS	Foul Sound South	<i>Pecten maximus</i>	-9.55889	53.06944

Note: Coordinates are expressed as decimalised longitude and latitude

Production Area: **CE-AH**

Location: **Aughinish**



Production area is defined as area inside boundary line:

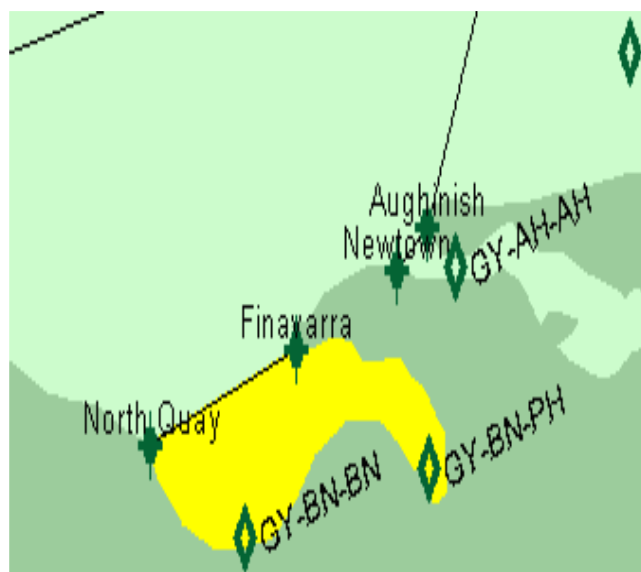
From Aughinish to Newtown as shown on chart, up to and including the mean high water mark and coordinates defined as:

Name	Longitude	Latitude
Aughinish	-9.07739	53.16391
Newtown	-9.08877	53.15801

Sample Points:

Location Code	Location	Species	Longitude	Latitude
CE-AH-AH	Aughinish	<i>Magallana gigas</i> <i>Ostrea edulis</i> <i>Spisula solida</i> <i>Mytilus edulis</i> <i>Glycymeris glycymeris</i>	-9.06667	53.15833

Note: Coordinates are expressed as decimalised longitude and latitude

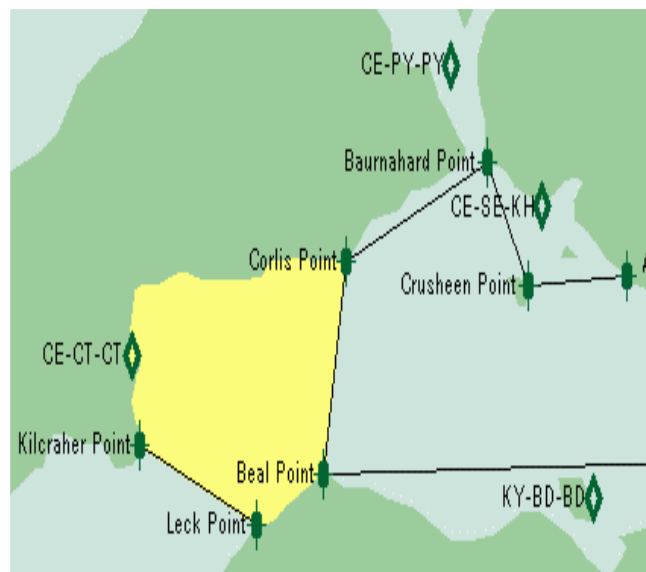
Production Area: **CE-BN**Location: **Ballyvaughan****Production area is defined as area inside boundary line:**

From Finavarra to North Quay as shown on chart, up to and including the mean high water mark and coordinates defined as:

Name	Longitude	Latitude
Finavarra	-9.12646	53.14710
North Quay	-9.18121	53.13393

Sample Points:

Location Code	Location	Species	Longitude	Latitude
CE-BN-BN	Ballyvaughan	<i>Magallana gigas</i>	-9.14583	53.12139
CE-BN-PH	Poul-na-clough	<i>Mytilus edulis</i>	-9.07667	53.13056

Production Area: **CE-CT**Location: **Carrigaholt****Production area is defined as area inside boundary line:**

From Kilcraher Point to Leck Point and Corlis Point to Beal Point as shown on chart, up to and including the mean high water mark and coordinates defined as:

Name	Longitude	Latitude
Kilcraher Point	-9.69958	52.58469
Leck Point	-9.64483	52.56970
Corlis Point	-9.60288	52.61921
Beal Point	-9.61354	52.57924

Sample Points:

Location Code	Location	Species	Longitude	Latitude
CE-CT-CT	Carrigaholt	<i>Magallana gigas</i>	-9.70306	52.60167

Production Area: **CE-PY**

Location: **Poulnasherry**



Production area is defined as area inside boundary line:

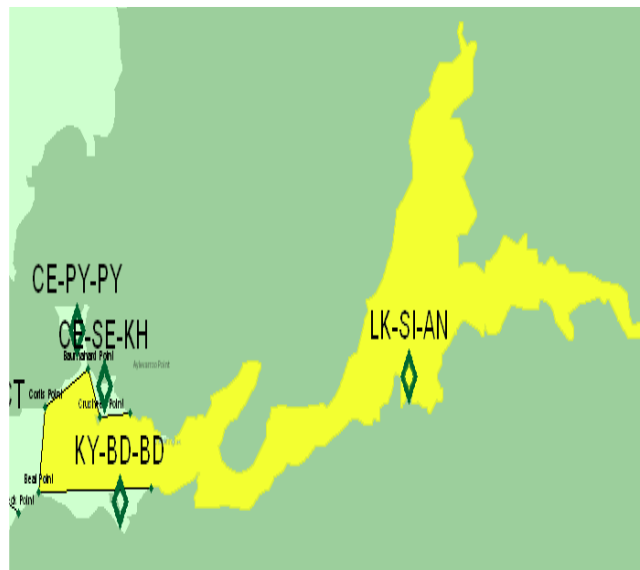
From Corlis Point to Baurnahard Point as shown on chart, up to and including the mean high water mark and coordinates defined as:

Name	Longitude	Latitude
Corlis Point	-9.60288	52.61921
Baurnahard Point	-9.53675	52.63784

Sample Points:

Location Code	Location	Species	Longitude	Latitude
CE-PY-PY	Poulnasherry	<i>Magallana gigas</i>	-9.55389	52.65611

Note: Coordinates are expressed as decimalised longitude and latitude

Production Area: **CE-SI**Location: **Shannon Inner****Production area is defined as area inside boundary line:**

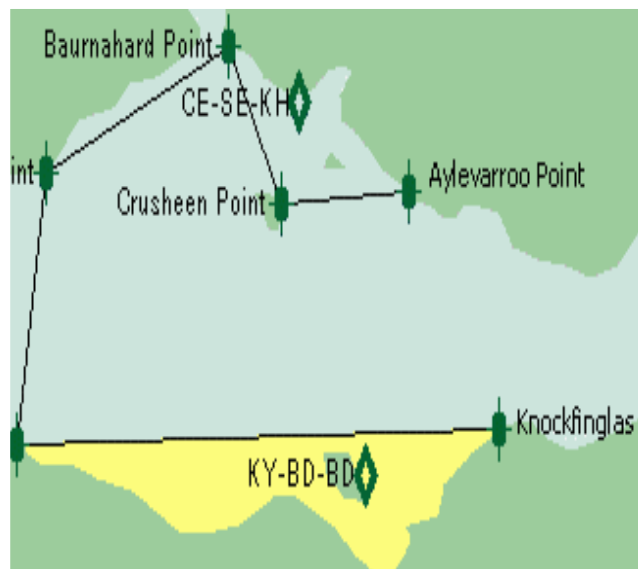
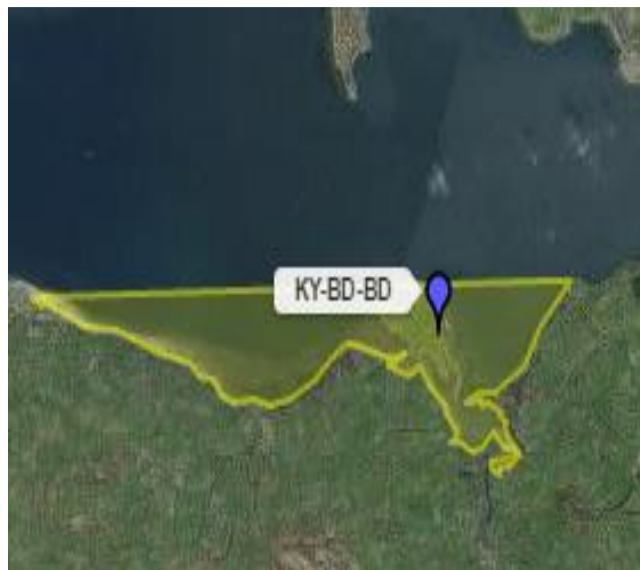
The upriver region inside a line from Knockfinglas to Beal Point to Corlis Point to Baurnahard Point to Crusheen Point to Aylevaroo Point as shown on chart, up to and including the mean high water mark and coordinates defined as:

Name	Longitude	Latitude
Baurnahard Point	-9.53675	52.63784
Crusheen Point	-9.51755	52.61467
Aylevaroo Point	-9.47133	52.61649
Beal Point	-9.61354	52.57924
Knockfinglas Point	-9.43862	52.58151
Corlis Point	-9.60288	52.61921

Sample Points:

Location Code	Location	Species	Longitude	Latitude
LK-SI-AN	Askeaton	<i>Magallana gigas</i>	-9.03686	52.63421

Note: Coordinates are expressed as decimalised longitude and latitude

Production Area: **CE-BD**Location: **Ballylongford****Production area is defined as area inside boundary line:**

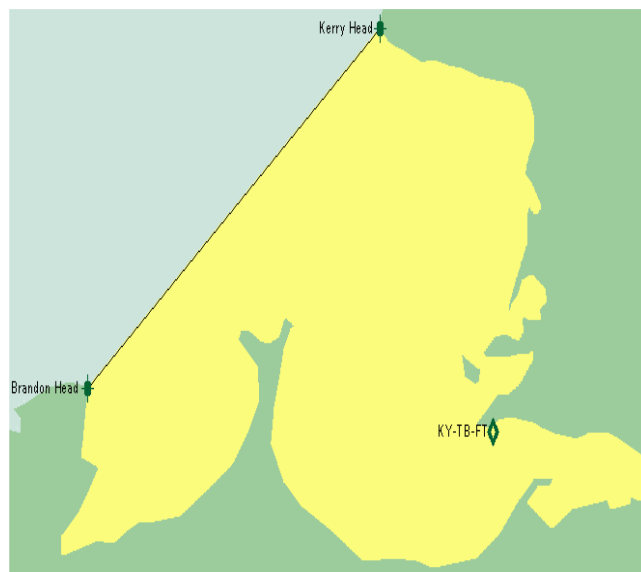
From Beal Point to Knockfinglas Point as shown on chart, up to and including the mean high water mark and coordinates defined as:

Name	Longitude	Latitude
Beal Point	-9.61354	52.57924
Knockfinglas Point	-9.43862	52.58151

Sample Points:

Location Code	Location	Species	Longitude	Latitude
KY-BD-BD	Ballylongford	<i>Magallana gigas</i>	-9.48694	52.57472

Note: Coordinates are expressed as decimalised longitude and latitude

Production Area: **KY-TB**Location: **Tralee Bay****Production area is defined as area inside boundary line:**

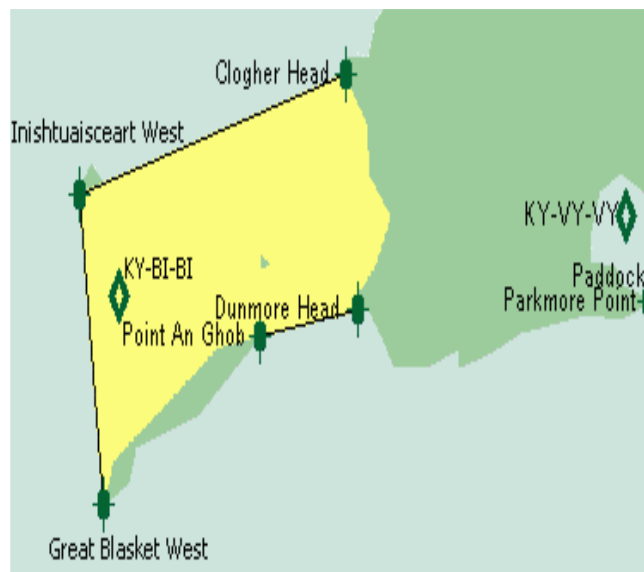
From Kerry Head to Brandon Head as shown on chart, up to and including the mean high water mark and coordinates defined as:

Name	Longitude	Latitude
Kerry Head	-9.94277	52.40842
Brandon Head	-10.15823	52.28803

Sample Points:

Location Code	Location	Species	Longitude	Latitude
KY-TB-FT	Fenit	<i>Ostrea edulis</i>	-9.85972	52.27361

Note: Coordinates are expressed as decimalised longitude and latitude

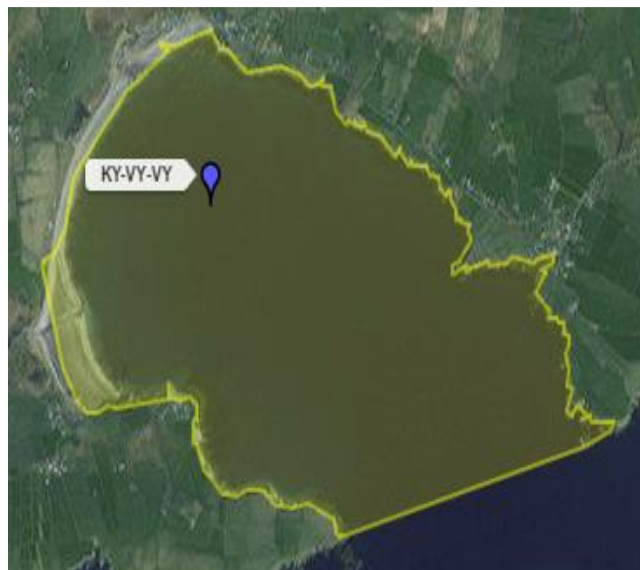
Production Area: **KY-BI**Location: **Blasket Islands****Production area is defined as area inside boundary line:**

From Great Blasket West to Inishtuaisceart West to Clogher Head and Dunmore Head to Point an Ghob as shown on chart, up to and including the mean high water mark and coordinates defined as:

Name	Longitude	Latitude
Clogher Head	-10.47537	52.14811
Inishtuaisceart West	-10.58558	52.12767
Great Blasket West	-10.57563	52.07497
Point An Ghob	-10.51092	52.10359
Dunmore Head	-10.47039	52.10813

Sample Points:

Location Code	Location	Species	Longitude	Latitude
KY-BI-BI	Blasket Islands	<i>Pecten maximus</i>	-10.56889	52.11056

Production Area: **KY-VY**Location: **Ventry****Production area is defined as area inside boundary line:**

From Paddock Point to Parkmore Point as shown on chart, up to and including the mean high water mark and coordinates defined as:

Name	Longitude	Latitude
Parkmore Point	-10.35022	52.10950
Paddock Point	-10.32533	52.11359

Sample Points:

Location Code	Location	Species	Longitude	Latitude
KY-VY-VY	Ventry Harbour	<i>Pecten maximus</i>	-10.35972	52.12417

Production Area: **KY-DE**Location: **Dingle****Production area is defined as area inside boundary line:**

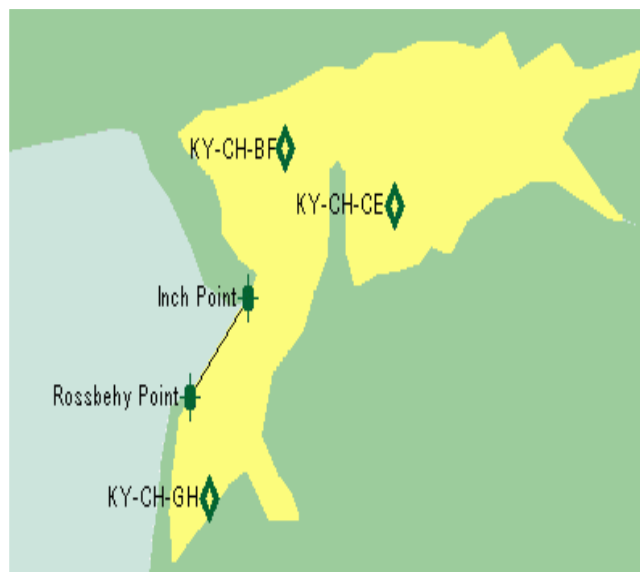
From Reenbeg Point to Beenbane Point as shown on chart, up to and including the mean high water mark and coordinates defined as:

Name	Longitude	Latitude
Reenbeg Point	-10.26489	52.11904
Beenbane Point	-10.25493	52.11949

Sample Points:

Location Code	Location	Species	Longitude	Latitude
KY-DE-BM	Burnham	<i>Mytilus edulis</i>	-10.30667	52.13083
KY-DE-DE	Dingle	<i>Pecten maximus</i>	-10.26667	52.12694

Note: Coordinates are expressed as decimalised longitude and latitude

Production Area: **KY-CH**Location: **Castlemaine Harbour****Production area is defined as area inside boundary line:**

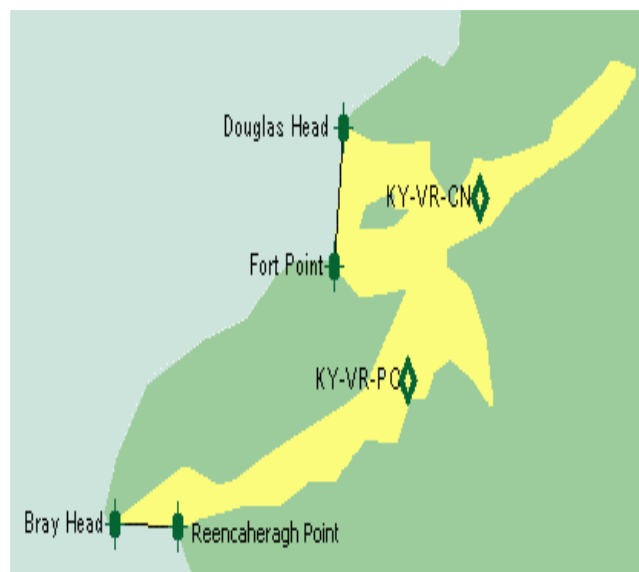
From Inch Point to Rossbehy Point as shown on chart, up to and including the mean high water mark and coordinates defined as:

Name	Longitude	Latitude
Inch Point	-9.93566	52.10813
Rossbehy Point	-9.96126	52.08860

Sample Points:

Location Code	Location	Species	Longitude	Latitude
KY-CH-BF	Banc Fluich	<i>Mytilus edulis</i>	-9.91944	52.13750
KY-CH-CE	Cromane East	<i>Magallana gigas</i> <i>Mytilus edulis</i>	-9.87083	52.12639
KY-CH-GH	Glenbeigh	<i>Magallana gigas</i>	-9.95306	52.06861

Note: Coordinates are expressed as decimalised longitude and latitude

Production Area: **KY-VR**Location: **Valentina River****Production area is defined as area inside boundary line:**

From Douglas Head to Fort Point and Bray Head to Reencaheragh Point as shown on chart, up to and including the mean high water mark and coordinates defined as:

Name	Longitude	Latitude
Douglas Head	-10.32177	51.95413
Fort Point	-10.32604	51.92823
Bray Head	-10.42772	51.88008
Reencaheragh Point	-10.39857	51.87962

Sample Points:

Location Code	Location	Species	Longitude	Latitude
KY-VR-CN	Cahirciveen	<i>Magallana gigas</i>	-10.25833	51.94111
KY-VR-PC	Portmagee Channel	<i>Pecten maximus</i>	-10.29167	51.90694

Note: Coordinates are expressed as decimalised longitude and latitude

Production Area: **KY-KE**Location: **Kilmakilloge****Production area is defined as area inside boundary line:**

From Laughanacreen to Laughran Point as shown on chart, up to and including the mean high water mark and coordinates defined as:

Name	Longitude	Latitude
Laughanacreen	-9.82473	51.78195
Laughran Point	-9.84607	51.77196

Sample Points:

Location Code	Location	Species	Longitude	Latitude
KY-KE-KE	Kilmakilloge	<i>Mytilus edulis</i> <i>Littorina littorea</i>	-9.81194	51.77194

Production Area: **KY-KO**Location: **Kenmare Outer**

Production area is defined as area inside boundary line:

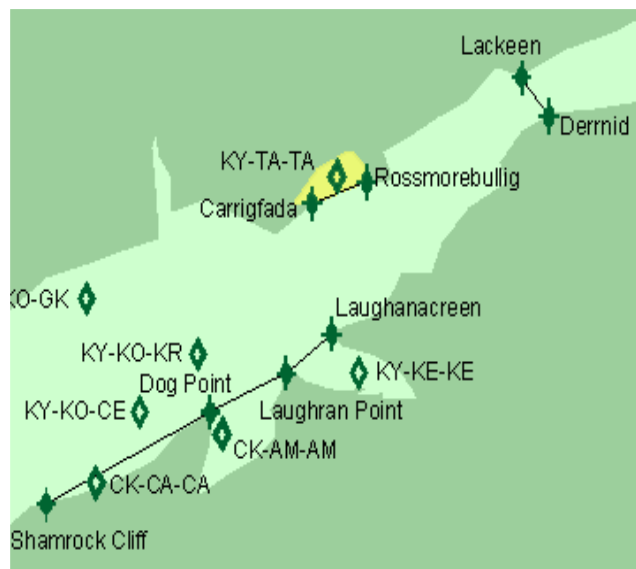
From Lambs Head to Cods Head and Shamrock Cliff to Dog Point to Laughran Point to Laughanacreen and Lackeen to Derrynid and Carrigfada to Rossmorebullig as shown on chart, up to and including the mean high water mark and coordinates defined as:

Name	Longitude	Latitude
Lackeen	-9.73585	51.84782
Derrynid	-9.72305	51.83783
Laughanacreen	-9.82473	51.78195
Laughran Point	-9.84607	51.77196
Dog Point	-9.88162	51.76196
Shamrock Cliff	-9.95842	51.73834
Cods Head	-10.10205	51.66974
Lambs Head	-10.12978	51.74061
Carrigfada	-9.83398	51.81557
Rossmorebullig	-9.80838	51.82102

Sample Points:

Location Code	Location	Species	Longitude	Latitude
KY-KO-KR	Kenmare River	<i>Pecten maximus</i> <i>Mytilus edulis</i>	-9.88750	51.77694
KY-KO-CE	Coosmore	<i>Mytilus edulis</i>	-9.91461	51.76219
KY-KO-GK	Gleesk	<i>Mytilus edulis</i>	-9.93959	51.79127

Note: Coordinates are expressed as decimalised longitude and latitude

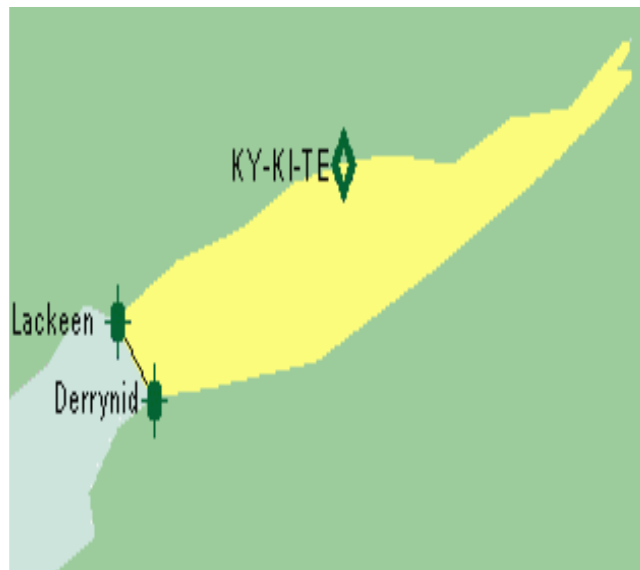
Production Area: **KY-TA**Location: **Tahilla****Production area is defined as area inside boundary line:**

From Carrigfada to Rossmorebullig as shown on chart, up to and including the mean high water mark and coordinates defined as:

Name	Longitude	Latitude
Carrigfada	-9.83398	51.81557
Rossmorebullig	-9.80838	51.82102

Sample Points:

Location Code	Location	Species	Longitude	Latitude
KY-TA-TA	Tahilla	<i>Mytilus edulis</i>	-9.82222	51.82250

Production Area: **KY-KI**Location: **Kenmare Inner**

Production area is defined as area inside boundary line:

From Lackeen to Derrynid as shown on chart, up to and including the mean high water mark and coordinates defined as:

Name	Longitude	Latitude
Lackeen	-9.73585	51.84782
Derrynid	-9.72305	51.83783

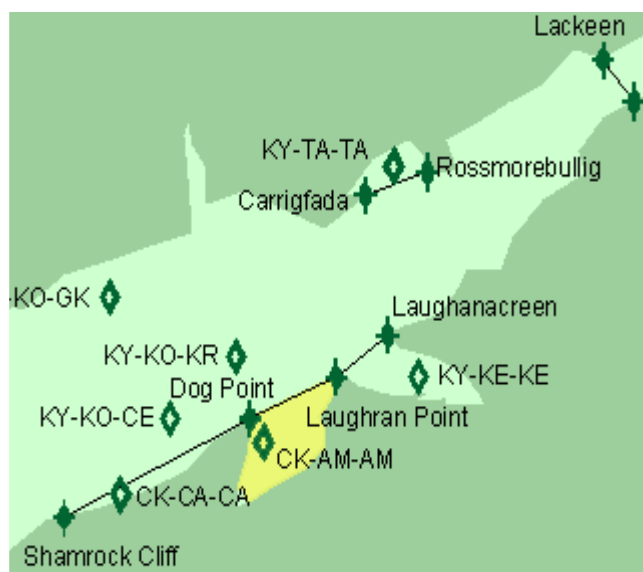
Sample Points:

Location Code	Location	Species	Longitude	Latitude
KY-KI-TE	Templenoe	<i>Magallana gigas</i>	-9.65722	51.86778

Note: Coordinates are expressed as decimalised longitude and latitude

Production Area: **CK-AM**

Location: **Ardgroom**



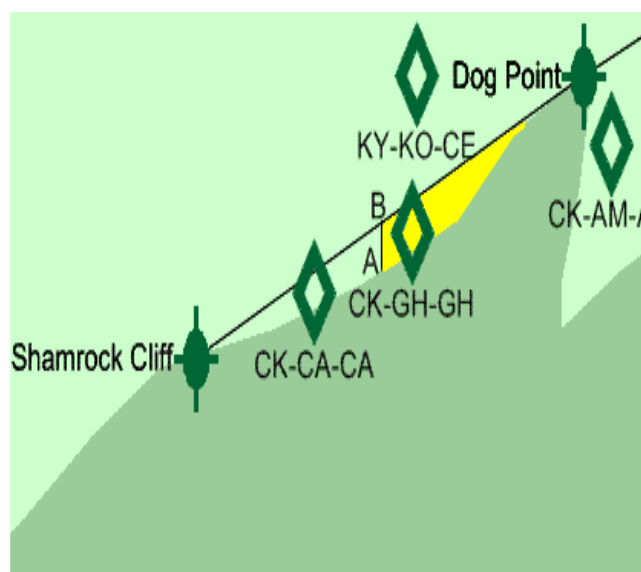
Production area is defined as area inside boundary line:

From Dog Point to Laughran Point as shown on chart, up to and including the mean high water mark and coordinates defined as:

Name	Longitude	Latitude
Laughran Point	-9.84607	51.77196
Dog Point	-9.88162	51.76196

Sample Points:

Location Code	Location	Species	Longitude	Latitude
CK-AM-AM	Ardgroom	<i>Mytilus edulis</i>	-9.87611	51.75639

Production Area: **CK-GH**Location: **Gouleenacoush**

Production area is defined as area inside boundary line:

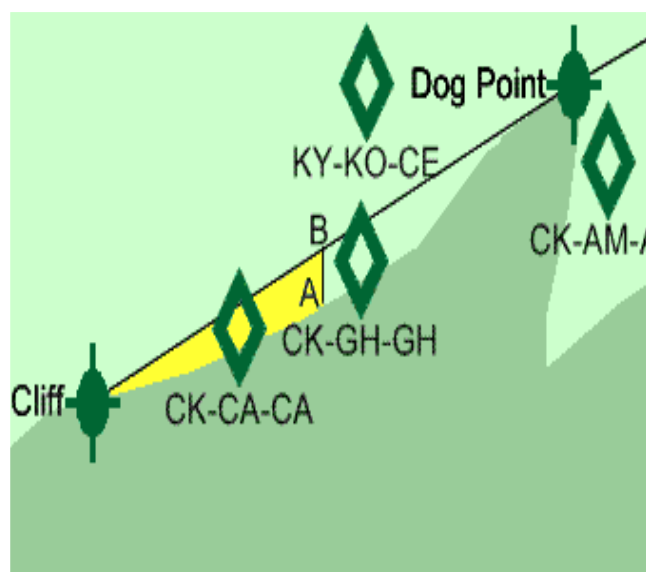
From Dog Point to Point B to Point A as shown on chart, up to and including the mean high water mark and coordinates defined as:

Name	Longitude	Latitude
A	-9.92188	51.74552
B	-9.92189	51.7496
Dog Point	-9.88162	51.76196

Sample Points:

Location Code	Location	Species	Longitude	Latitude
CK-GH-GH	Gouleenacoush	<i>Mytilus edulis</i>	-9.915662	51.74892

Note: Coordinates are expressed as decimalised longitude and latitude

Production Area: **CK-CA**Location: **Cleandra****Production area is defined as area inside boundary line:**

From Shamrock Cliff to Point B to Point A as shown on chart, up to and including the mean high water mark and coordinates defined as:

Name	Longitude	Latitude
A	-9.92188	51.74552
B	-9.92189	51.7496
Shamrock Cliff	-9.95842	51.7383

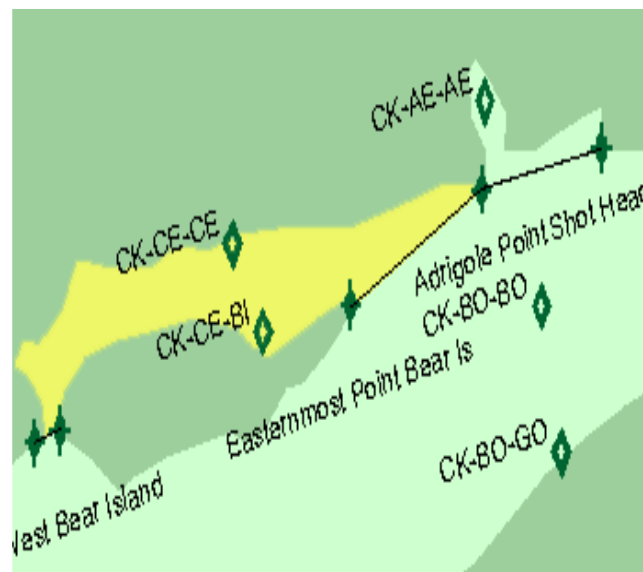
Sample Points:

Location Code	Location	Species	Longitude	Latitude
CK-CA-CA	Cleandra	<i>Mytilus edulis</i>	-9.93495	51.74379

Note: Coordinates are expressed as decimalised longitude and latitude

Production Area: **CK-CE**

Location: **Castletownbere**



Production area is defined as area inside boundary line:

From Adrigole Point to Easternmost Point Bear Island and Ardnakinna Point and Headland West Bear Island as shown on chart, up to and including the mean high water mark and coordinates defined as:

Name	Longitude	Latitude
Adrigole Point	-9.72589	51.66565
Easternmost Point Bear Island	-9.78491	51.64430
Ardnakinna Point	-9.91575	51.62113
Headland West Bear Island	-9.92713	51.61886

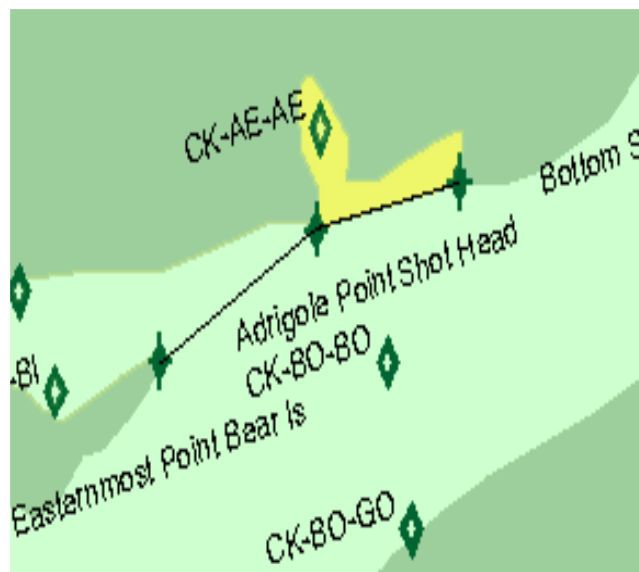
Sample Points:

Location Code	Location	Species	Longitude	Latitude
CK-CE-CE	Castletownbere	<i>Mytilus edulis</i> <i>Echinus esculentus</i> <i>Littorina littorea</i>	-9.83806	51.65556
CK-CE-BI	Bear Island	<i>Mytilus edulis</i>	-9.8240	51.6393

Note: Coordinates are expressed as decimalised longitude and latitude

Production Area: **CK-AE**

Location: **Adrigole**



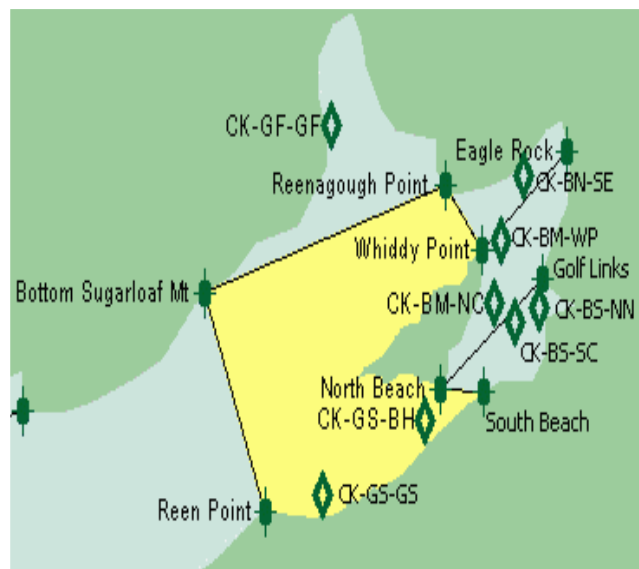
Production area is defined as area inside boundary line:

From Adrigole Point to Shot Head as shown on chart, up to and including the mean high water mark and coordinates defined as:

Name	Longitude	Latitude
Shot Head	-9.67185	51.67338
Adrigole Point	-9.72589	51.66565

Sample Points:

Location Code	Location	Species	Longitude	Latitude
CK-AE-AE	Adrigole	<i>Mytilus edulis</i> <i>Ruditapes philipinarum</i>	-9.72417	51.68194

Production Area: **CK-GS**Location: **Gearhies****Production area is defined as area inside boundary line:**

From Whiddy Point to Reenagough Point to Bottom Sugarloaf Mountain to Reen Point and South Beach to North Beach as shown on chart, up to and including the mean high water mark and coordinates defined as:

Name	Longitude	Latitude
Whiddy Point	-9.48342	51.70381
Reenagough Point	-9.49835	51.71608
Bottom Sugarloaf Mountain	-9.59719	51.69564
Reen Point	-9.57230	51.65430

Sample Points:

Location Code	Location	Species	Longitude	Latitude
CK-GS-BH	Beach	<i>Paracentrotus lividus</i>	-9.50722	51.67167
CK-GS-GS	Gearhies	<i>Mytilus edulis</i>	-9.54889	51.65750

Note: Coordinates are expressed as decimalised longitude and latitude

Production Area: **CK-GF**

Location: **Glengarriff**



Production area is defined as area inside boundary line:

From Reenagough Point to Bottom Sugarloaf Mountain as shown on chart, up to and including the mean high water mark and coordinates defined as:

Name	Longitude	Latitude
Reenagough Point	-9.49835	51.71608
Bottom Sugarloaf Mountain	-9.59719	51.69564

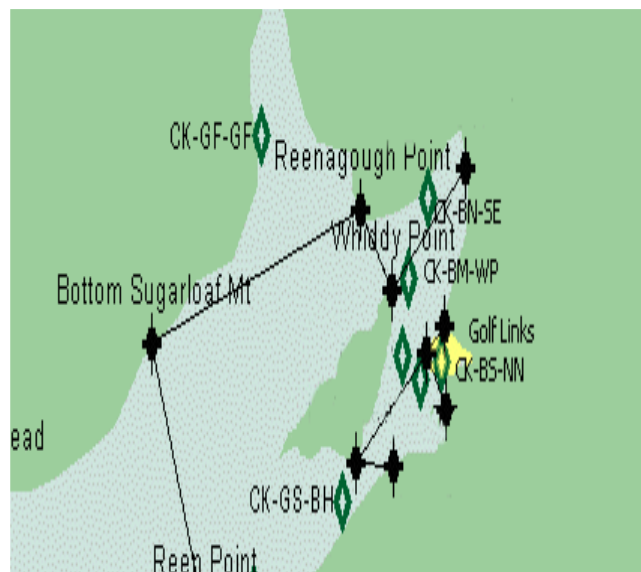
Sample Points:

Location Code	Location	Species	Longitude	Latitude
CK-GF-GF	Glengarriff	<i>Mytilus edulis</i>	-9.54528	51.72722

Note: Coordinates are expressed as decimalised longitude and latitude

Production Area: **CK-NN**

Location: **Newtown**



Production area is defined as area inside boundary line:

From North Beach to South Beach to Golf Links as shown on chart, up to and including the mean high water mark and coordinates defined as:

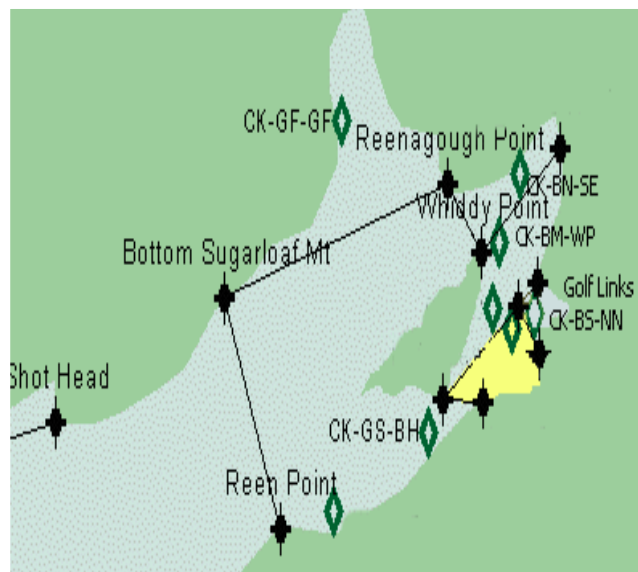
Name	Longitude	Latitude
Golf Links	-9.45853	51.69836
Mid Harbour	-9.46706	51.69427
Bantry South	-9.45782	51.68564

Sample Points:

Location Code	Location	Species	Longitude	Latitude
CK-NN-NN	Newtown	<i>Mytilus edulis</i>	-9.45972	51.69278

Production Area: **CK-BS**

Location: **Bantry South**



Production area is defined as area inside boundary line:

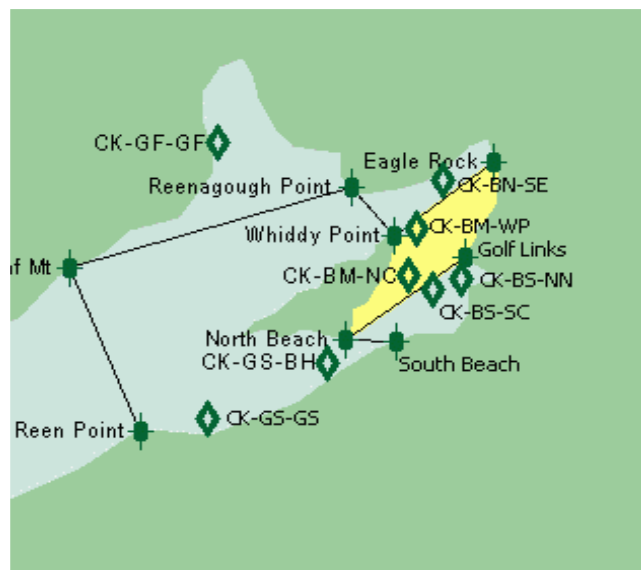
From North Beach to South Beach to Mid Harbour to Bantry South as shown on chart, up to and including the mean high water mark and coordinates defined as:

Name	Longitude	Latitude
South Beach	-9.48271	51.67701
North Beach	-9.50048	51.67746
Mid Harbour	-9.46706	51.69427
Bantry South	-9.45782	51.68564

Sample Points:

Location Code	Location	Species	Longitude	Latitude
CK-BS-SC	South Chapel	<i>Mytilus edulis</i>	-9.46972	51.69000

Note: Coordinates are expressed as decimalised longitude and latitude

Production Area: **CK-BM**Location: **Bantry Middle****Production area is defined as area inside boundary line:**

From North Beach to Golf Links and Whiddy Point to Eagle Rock as shown on chart, up to and including the mean high water mark and coordinates defined as:

Name	Longitude	Latitude
North Beach	-9.50048	51.67746
Golf Links	-9.45853	51.69836
Whiddy Point	-9.48342	51.70381
Eagle Rock	-9.44858	51.72244

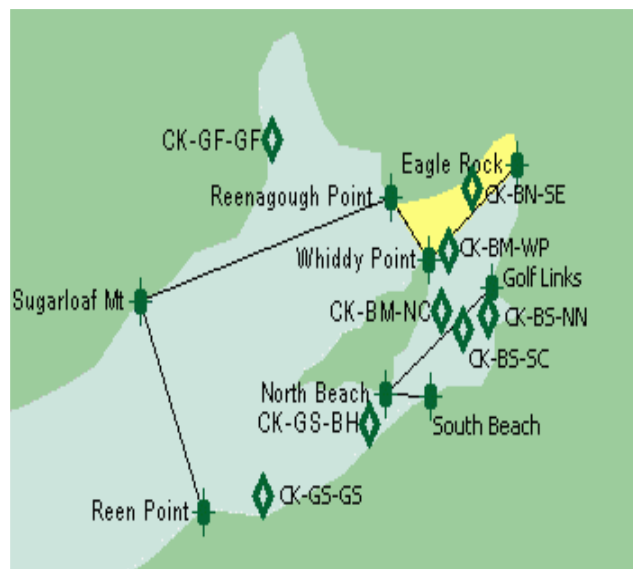
Sample Points:

Location Code	Location	Species	Longitude	Latitude
CK-BM-NC	North Chapel	<i>Mytilus edulis</i>	-9.47833	51.69361
CK-BM-WP	Whiddy Point	<i>Mytilus edulis</i>	-9.47556	51.70556

Note: Coordinates are expressed as decimalised longitude and latitude

Production Area: **CK-BN**

Location: **Bantry North**



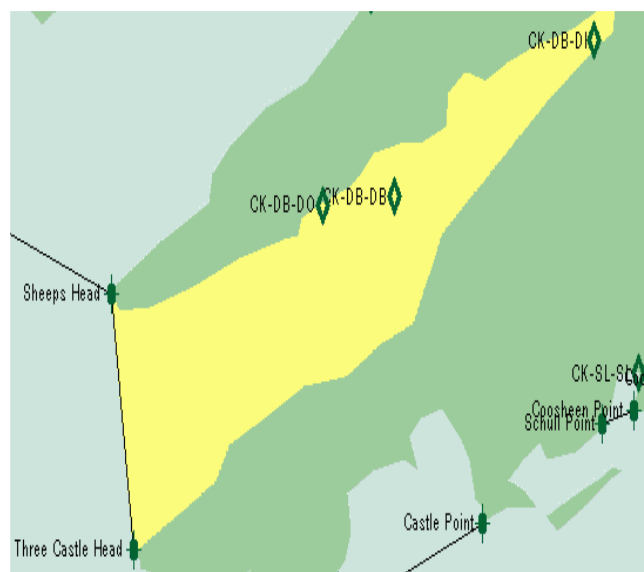
Production area is defined as area inside boundary line:

From Reenagough Point to Whiddy Point to Eagle Rock as shown on chart, up to and including the mean high water mark and coordinates defined as:

Name	Longitude	Latitude
Reenagough Point	-9.49835	51.71608
Whiddy Point	-9.48342	51.70381
Eagle Rock	-9.44858	51.72244

Sample Points:

Location Code	Location	Species	Longitude	Latitude
CK-BN-SE	Snave	<i>Mytilus edulis</i>	-9.46667	51.71806

Production Area: **CK-DB**Location: **Dunmanus Bay****Production area is defined as area inside boundary line:**

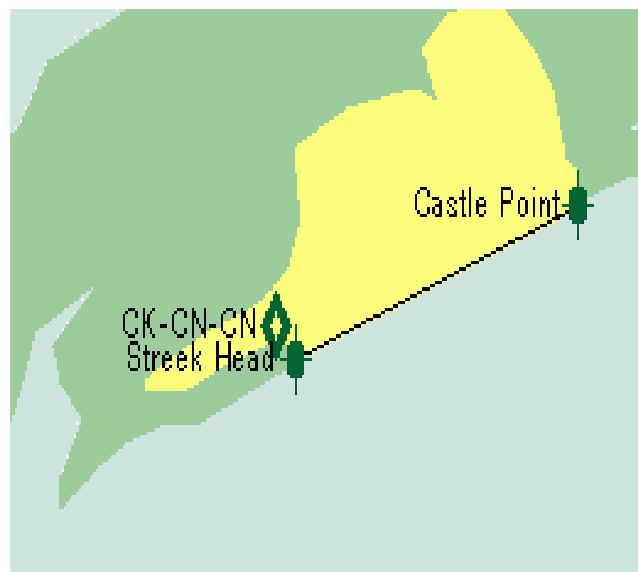
From Sheeps Head to Three Castle Head as shown on chart, up to and including the mean high water mark and coordinates defined as:

Name	Longitude	Latitude
Sheeps Head	-9.84749	51.54481
Three Castle Head	-9.83398	51.48303

Sample Points:

Location Code	Location	Species	Longitude	Latitude
CK-DB-DB	Dunmanus Bay	<i>Pecten maximus</i> <i>Mytilus edulis</i>	-9.67639	51.56833
CK-DB-DI	Dunmanus Inner	<i>Paracentrotus lividus</i> <i>Mytilus edulis</i>	-9.55528	51.60611
CK-DB-DO	Dunmanus Outer	<i>Mytilus edulis</i>	-9.71972	51.56639

Note: Coordinates are expressed as decimalised longitude and latitude

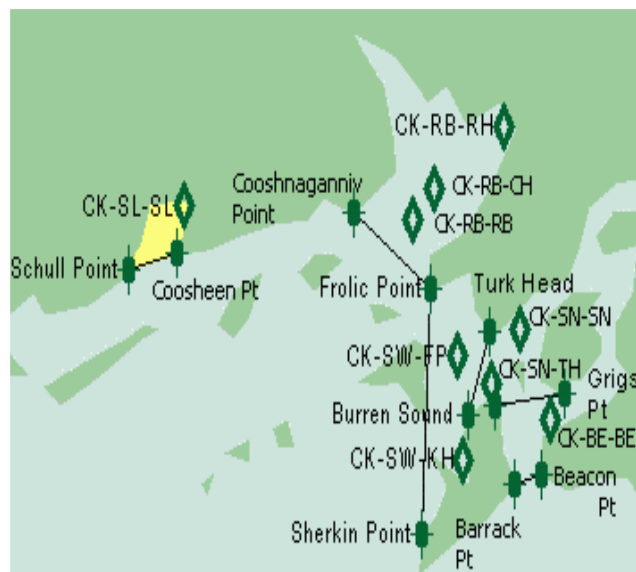
Production Area: **CK-CN**Location: **Crookhaven****Production area is defined as area inside boundary line:**

From Streek Head to Castle Point as shown on chart, up to and including the mean high water mark and coordinates defined as:

Name	Longitude	Latitude
Streek Head	-9.70456	51.46849
Castle Point	-9.62279	51.48939

Sample Points:

Location Code	Location	Species	Longitude	Latitude
CK-CN-CN	Crookhaven	<i>Pecten maximus</i>	-9.71056	51.47306

Production Area: **CK-SL**Location: **Schull**

Production area is defined as area inside boundary line:

From Schull Point to Coosheen Point as shown on chart, up to and including the mean high water mark and coordinates defined as:

Name	Longitude	Latitude
Schull Point	-9.55026	51.51346
Coosheen Point	-9.53106	51.51664

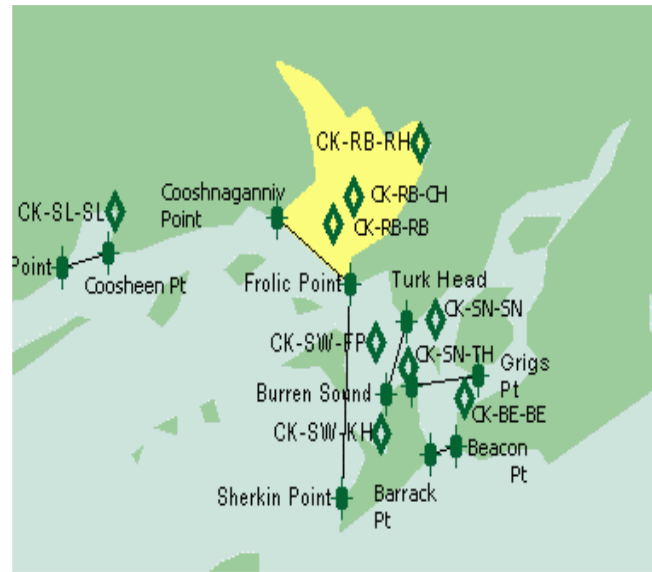
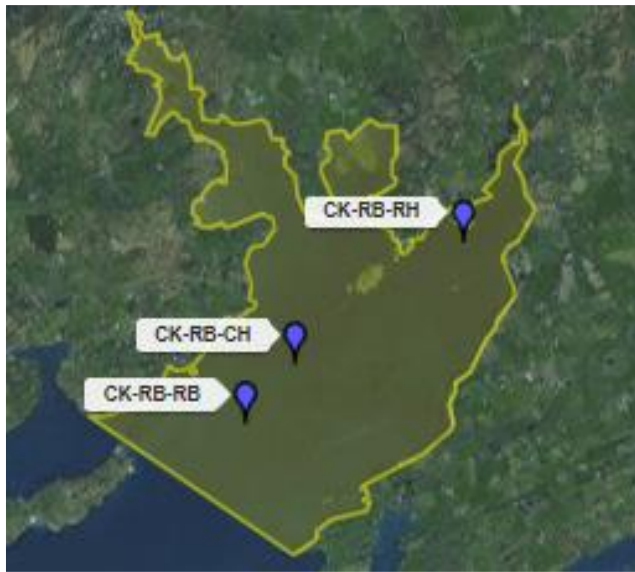
Sample Points:

Location Code	Location	Species	Longitude	Latitude
CK-SL-SL	Schull	<i>Magallana gigas</i>	-9.52806	51.52556

Note: Coordinates are expressed as decimalised longitude and latitude

Production Area: **CK-RB**

Location: **Roaringwater Bay**



Production area is defined as area inside boundary line:

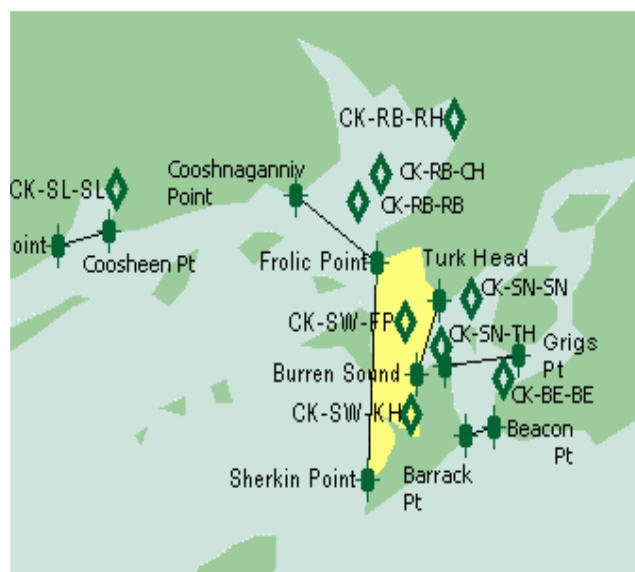
From Cooshaganniv Point to Frolic Point as shown on chart, up to and including the mean high water mark and coordinates defined as:

Name	Longitude	Latitude
Cooshaganniv Point	-9.46066	51.52437
Frolic Point	-9.43009	51.50983

Sample Points:

Location Code	Location	Species	Longitude	Latitude
CK-RB-CH	Carrigvigliash	<i>Mytilus edulis</i>	-9.42861	51.52889
CK-RB-RB	Roaringwater Bay	<i>Pecten maximus</i> <i>Mytilus edulis</i>	-9.43694	51.52306
CK-RB-RH	Reenmurrish	<i>Mytilus edulis</i>	-9.40111	51.54083

Note: Coordinates are expressed as decimalised longitude and latitude

Production Area: **CK-SW**Location: **Sherkin West****Production area is defined as area inside boundary line:**

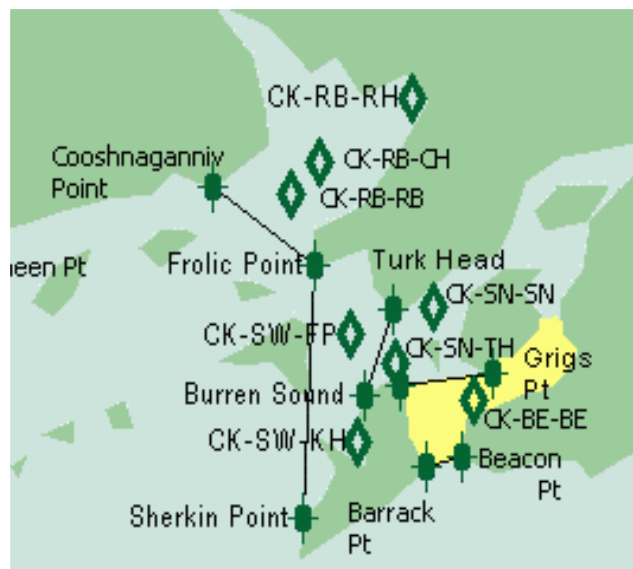
From Frolic Point to Sherkin Point and Burren Sound to Turk Head as shown on chart, up to and including the mean high water mark and coordinates defined as:

Name	Longitude	Latitude
Frolic Point	-9.43009	51.50983
Sherkin Point	-9.43364	51.46304
Turk Head	-9.40662	51.50165
Burren Sound	-9.41515	51.48575

Sample Points:

Location Code	Location	Species	Longitude	Latitude
CK-SW-FP	Frolic Point	<i>Pecten maximus</i>	-9.41917	51.49694
CK-SW-KH	Kinish	<i>Magallana gigas</i>	-9.41729	51.47712

Note: Coordinates are expressed as decimalised longitude and latitude

Production Area: **CK-BE**Location: **Baltimore****Production area is defined as area inside boundary line:**

From Grigs Point to East Farranacoush and Beacon Point to Barrack Point as shown on chart, up to and including the mean high water mark and coordinates defined as:

Name	Longitude	Latitude
East Farranacoush	-9.40449	51.48757
Grigs Point	-9.37676	51.48984
Barrack Point	-9.39667	51.47258
Beacon Point	-9.38600	51.47440

Sample Points:

Location Code	Location	Species	Longitude	Latitude
CK-BE-BE	Baltimore	<i>Magallana gigas</i>	-9.38245	51.48484

Note: Coordinates are expressed as decimalised longitude and latitude

Production Area: **CK-RY**

Location: **Rosscarberry**



Production area is defined as area inside boundary line:

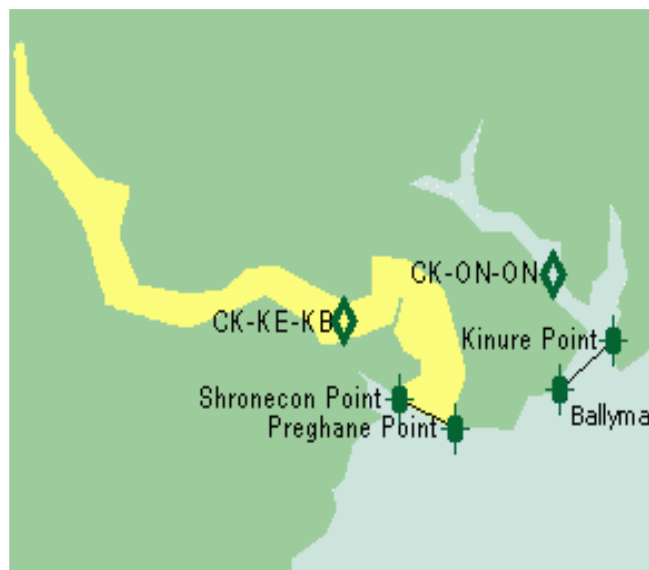
From Downeen Point to Creggane Point as shown on chart, up to and including the mean high water mark and coordinates defined as:

Name	Longitude	Latitude
Downeen Point	-9.11224	51.53981
Creggane Point	-9.08379	51.54844

Sample Points:

Location Code	Location	Species	Longitude	Latitude
CK-RY-RY	Rosscarberry	<i>Magallana gigas</i>	-9.11793	51.55390

Note: Coordinates are expressed as decimalised longitude and latitude

Production Area: **CK-KE**Location: **Kinsale****Production area is defined as area inside boundary line:**

From Shronecon Point to Preghane Point as shown on chart, up to and including the mean high water mark and coordinates defined as:

Name	Longitude	Latitude
Shronecon Point	-8.51067	51.67974
Preghane Point	-8.49289	51.67428

Sample Points:

Location Code	Location	Species	Longitude	Latitude
CK-KE-KB	Kinsale Bridge	<i>Magallana gigas</i>	-8.52861	51.69417

Production Area: **CK-ON**Location: **Oysterhaven****Production area is defined as area inside boundary line:**

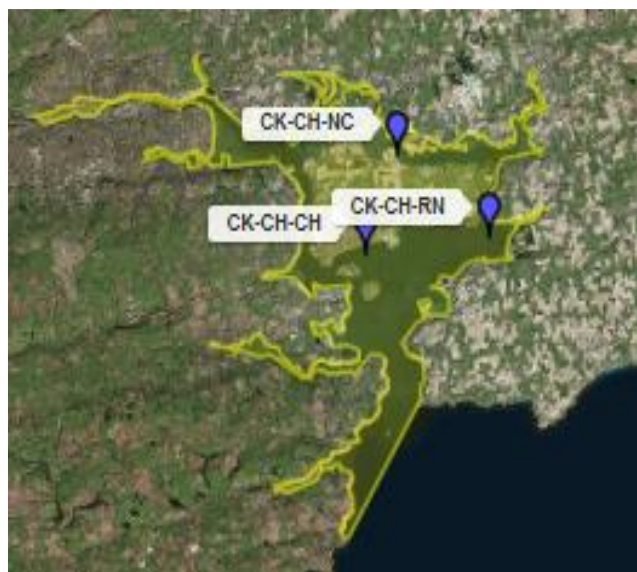
From Kinure Point to Ballymacus Point as shown on chart, up to and including the mean high water mark and coordinates defined as:

Name	Longitude	Latitude
Ballymacus Point	-8.45947	51.68155
Kinure Point	-8.44241	51.69064

Sample Points:

Location Code	Location	Species	Longitude	Latitude
CK-ON-ON	Oysterhaven	<i>Magallana gigas</i>	-8.46194	51.70306

Note: Coordinates are expressed as decimalised longitude and latitude

Production Area: **CK-CH**Location: **Cork Harbour****Production area is defined as area inside boundary line:**

From Roberts Head to Roches Point as shown on chart, up to and including the mean high water mark and coordinates defined as:

Name	Longitude	Latitude
Roberts Head	-8.30375	51.74379
Roches Point	-8.25113	51.79285

Sample Points:

Location Code	Location	Species	Longitude	Latitude
CK-CH-CH	Cobh	<i>Pecten maximus</i>	-8.28056	51.84500
CK-CH-NC	North Channel	<i>Magallana gigas</i> <i>Ostrea edulis</i> <i>Mytilus edulis</i>	-8.25917	51.88056
CK-CH-RN	Rostellan	<i>Magallana gigas</i>	-8.19833	51.85111

Note: Coordinates are expressed as decimalised longitude and latitude

Production Area: **CK-YB**Location: **Youghal Bay**

Production area is defined as area inside boundary line:

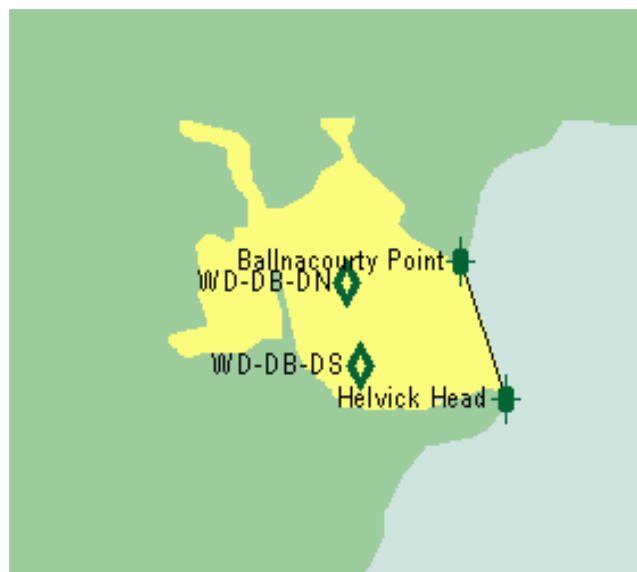
From Knockadoon Point to East Point as shown on chart, up to and including the mean high water mark and coordinates defined as:

Name	Longitude	Latitude
Knockadoon Point	-7.86644	51.88280
East Point	-7.83159	51.94323

Sample Points:

Location Code	Location	Species	Longitude	Latitude
CK-YB-YB	Youghal Bay	<i>Mytilus edulis</i>	-7.84861	51.97111
CK-YB-FP	Ferry Point	<i>Magallana gigas</i>	-7.89083	51.90083

Note: Coordinates are expressed as decimalised longitude and latitude

Production Area: **WD-DB**Location: **Dungarvan Bay****Production area is defined as area inside boundary line:**

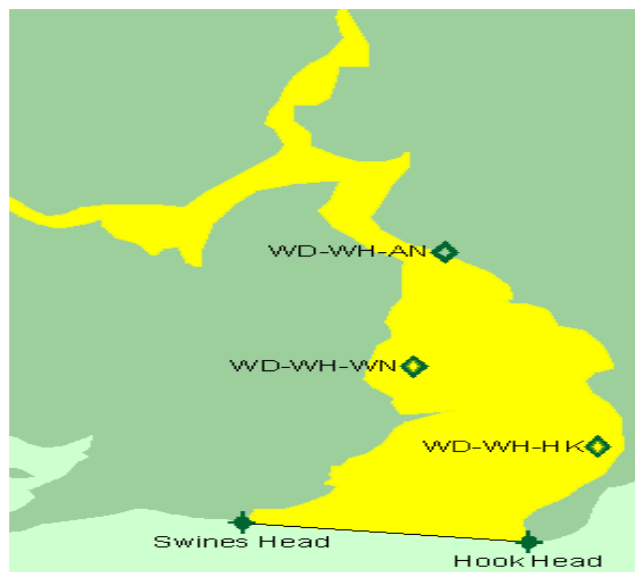
From Ballnacourty Point to Helvick Head as shown on chart, up to and including the mean high water mark and coordinates defined as:

Name	Longitude	Latitude
Helvick Head	-7.53721	52.05226
Ballnacourty Point	-7.55143	52.07861

Sample Points:

Location Code	Location	Species	Longitude	Latitude
WD-DB-DN	Dungarvan North	<i>Magallana gigas</i>	-7.58722	52.07472
WD-DB-DS	Dungarvan South	<i>Magallana gigas</i>	-7.58250	52.05861

Note: Coordinates are expressed as decimalised longitude and latitude

Production Area: **WD-WH**Location: **Waterford Harbour****Production area is defined as area inside boundary line:**

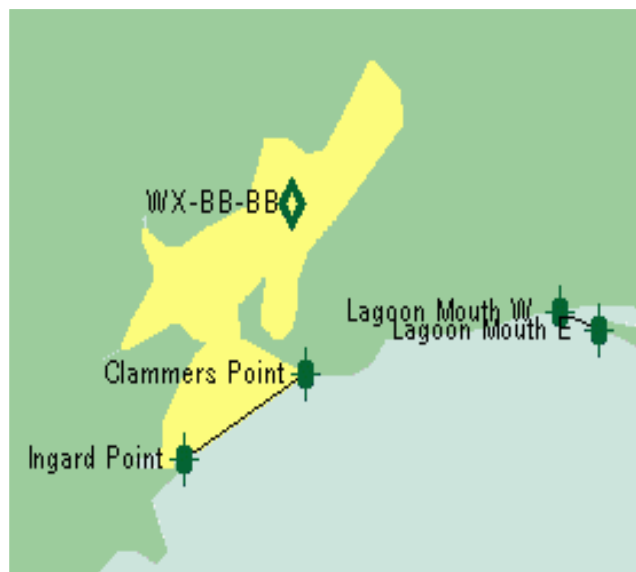
From Swines Head to Hook Head as shown on chart, up to and including the mean high water mark and coordinates defined as:

Name	Longitude	Latitude
Swines Head	-7.02310	52.13267
Hook Head	-6.92853	52.12494

Sample Points:

Location Code	Location	Species	Longitude	Latitude
WD-WH-AN	Arthurstown	<i>Mytilus edulis</i>	-6.95639	52.24056
WD-WH-WN	Woodstown	<i>Magallana gigas</i>	-6.96639	52.19500
WD-WH-HK	Harrylock	<i>Spisula solida</i>	-6.90580	52.16300

Note: Coordinates are expressed as decimalised longitude and latitude

Production Area: **WD-BB**Location: **Bannow Bay****Production area is defined as area inside boundary line:**

From Ingard Point to Clammers Point as shown on chart, up to and including the mean high water mark and coordinates defined as:

Name	Longitude	Latitude
Ingard Point	-6.82258	52.19082
Clammers Point	-6.78489	52.20581

Sample Points:

Location Code	Location	Species	Longitude	Latitude
WX-BB-BB	Bannow Bay	<i>Magallana gigas</i> <i>Littorina littorea</i>	-6.78917	52.23583

Production Area: **WX-BE-BE**Location: **Ballyteigue Bay****Production area is defined as area inside boundary line:**

From Lagoon Mouth W to Lagoon Mouth E as shown on chart, up to and including the mean high water mark and coordinates defined as:

Name	Longitude	Latitude
Lagoon Mouth W	-6.70596	52.21671
Lagoon Mouth E	-6.69388	52.21353

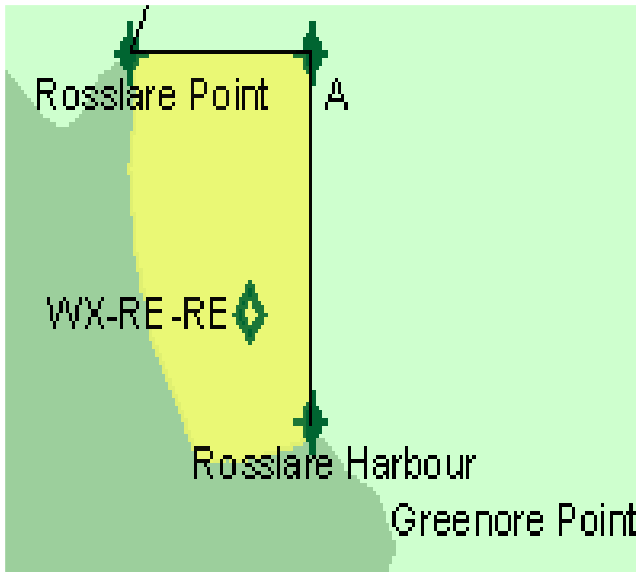
Sample Points:

Location Code	Location	Species	Longitude	Latitude
WX-BE-BE	Ballyteigue	<i>Magallana gigas</i>	-6.66278	52.21389

Note: Coordinates are expressed as decimalised longitude and latitude

Production Area: **WX-RE**

Location: **Rosslare**



Production area is defined as area inside boundary line:

From Rosslare Point to Point A to Rosslare Harbour as shown on chart, up to and including the mean high water mark and coordinates defined as:

Name	Longitude	Latitude
Rosslare Point	-6.38954	52.30575
A	-6.34	52.30575
Rosslare Harbour	-6.34	52.255

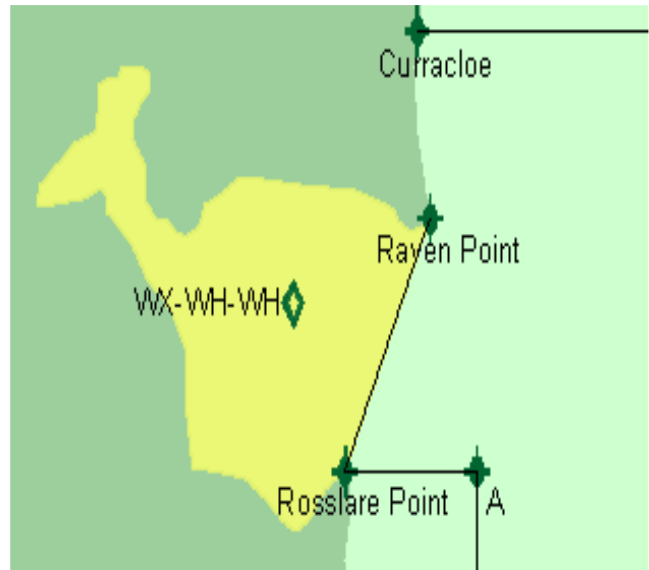
Sample Points:

Location Code	Location	Species	Longitude	Latitude
WX-RE-RE	Rosslare	<i>Ensis siliqua</i> <i>Buccinum undatum</i>	-6.35667	52.27

Note: Coordinates are expressed as decimalised longitude and latitude

Production Area: **WX-WH**

Location: **Wexford Harbour**



Production area is defined as area inside boundary line:

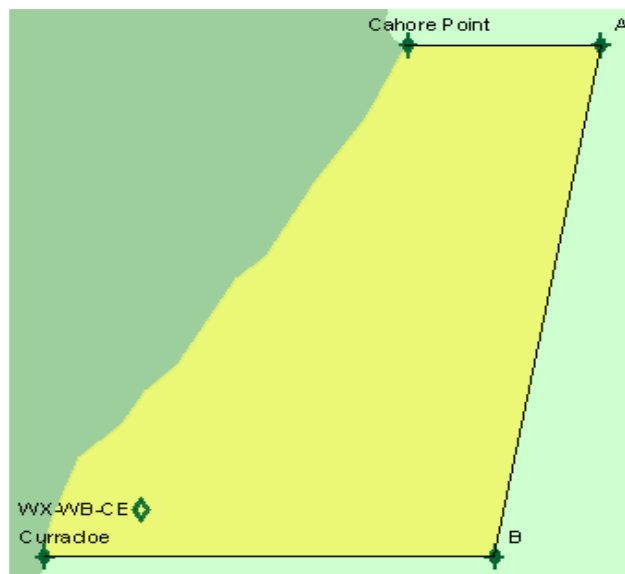
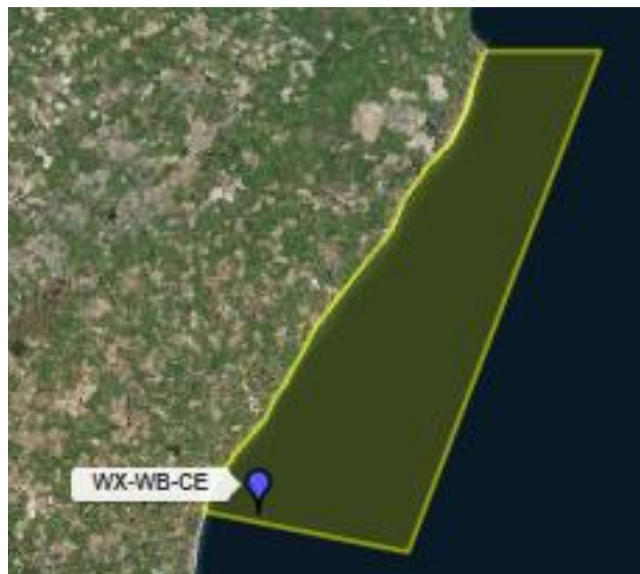
From Rosslare Point to Raven Point as shown on chart, up to and including the mean high water mark and coordinates defined as:

Name	Longitude	Latitude
Rosslare Point	-6.38954	52.30575
Raven Point	-6.35754	52.35027

Sample Points:

Location Code	Location	Species	Longitude	Latitude
WX-WH-WH	Wexford Harbour	<i>Mytilus edulis</i>	-6.40889	52.33528

Note: Coordinates are expressed as decimalised longitude and latitude

Production Area: **WX-WB**Location: **Wexford Bay****Production area is defined as area inside boundary line:**

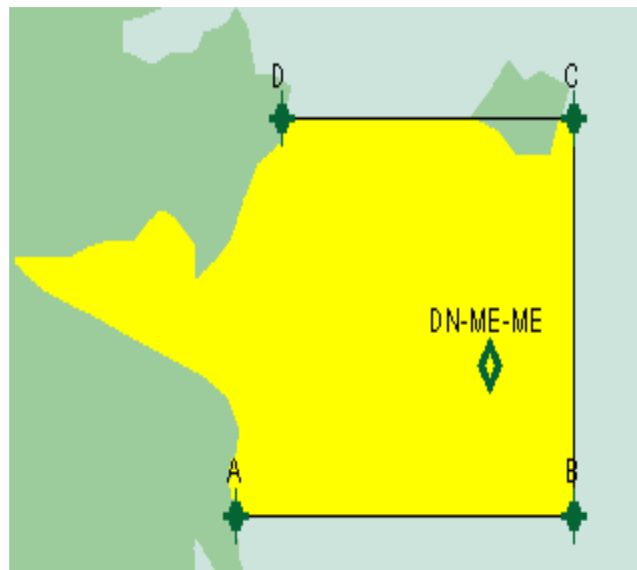
From Cahore Point to Point A to Point B to Curracloe as shown on chart, up to and including the mean high water mark and coordinates defined as:

Name	Longitude	Latitude
Cahore Point	-6.190906	52.56682
A	-6.1	52.56682
B	-6.15	52.38333
Curracloe	-6.36233	52.35027

Sample Points:

Location Code	Location	Species	Longitude	Latitude
WX-WB-CE	Curracloe	<i>Ensis siliqua</i> <i>Buccinum undatum</i>	-6.31667	52.4

Note: Coordinates are expressed as decimalised longitude and latitude

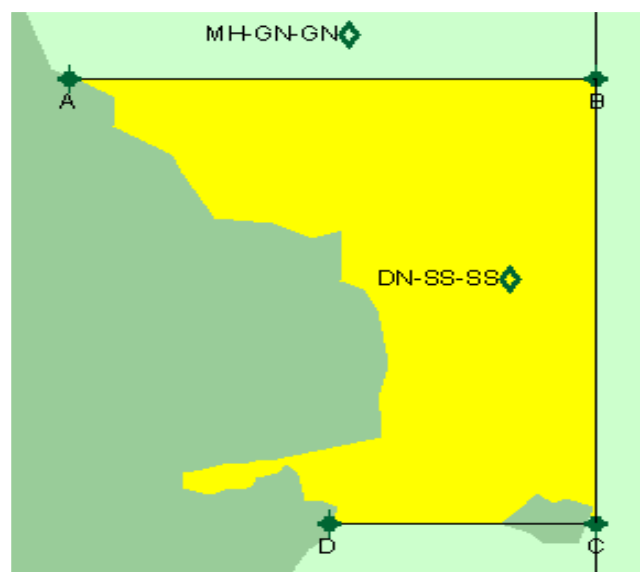
Production Area: **DN-ME**Location: **Malahide****Production area is defined as area inside boundary line:**

From Point A to Point B to Point C to Point D as shown on chart, up to and including the mean high water mark and coordinates defined as:

Name	Longitude	Latitude
A	-6.12	53.423
B	-6	53.423
C	-6	53.49
D	-6.104	53.49

Sample Points:

Location Code	Location	Species	Longitude	Latitude
DN-ME-ME	Malahide	<i>Ensis siliqua</i> <i>Buccinum undatum</i>	-6.02972	53.44833

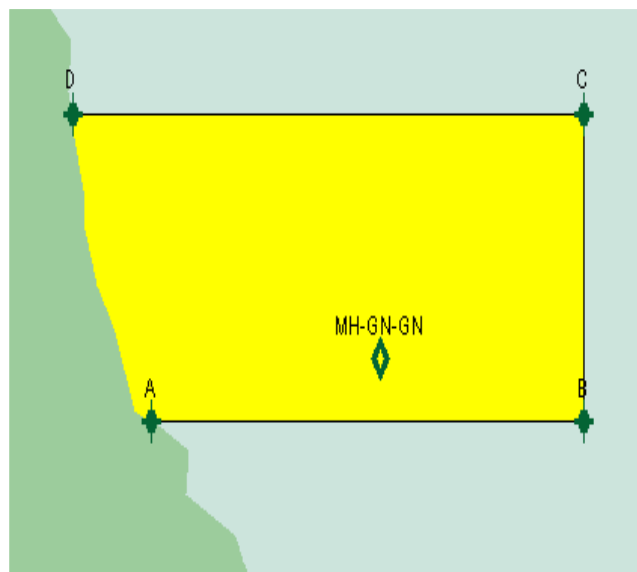
Production Area: **DN-SS**Location: **Skerries****Production area is defined as area inside boundary line:**

From Point A to Point B to Point C to Point D as shown on chart, up to and including the mean high water mark and coordinates defined as:

Name	Longitude	Latitude
A	-6.204	53.633
B	-6	53.633
C	-6	53.49
D	-6.104	53.49

Sample Points:

Location Code	Location	Species	Longitude	Latitude
DN-SS-SS	Skerries	<i>Ensis siliqua</i> <i>Littorina littorea</i>	-6.03333	53.56833

Production Area: **MH-GN**Location: **Gormanstown**

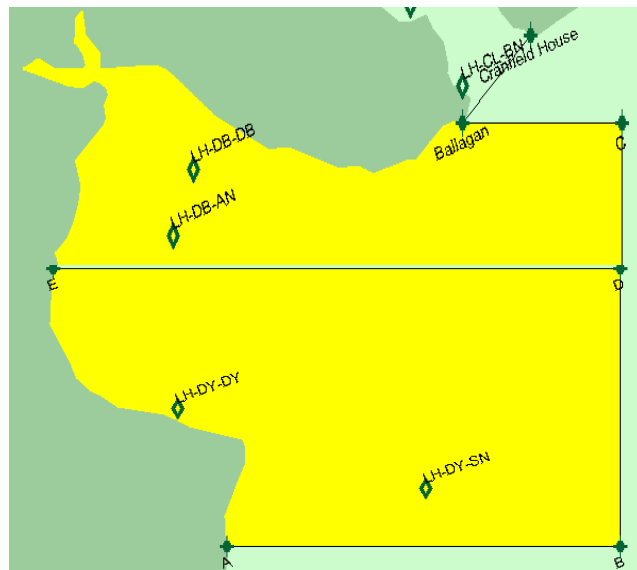
Production area is defined as area inside boundary line:

From Point A to Point B to Point C to Point D as shown on chart, up to and including the mean high water mark and coordinates defined as:

Name	Longitude	Latitude
A	-6.204	53.633
B	-6	53.633
C	-6	53.79
D	-6.221	53.79

Sample Points:

Location Code	Location	Species	Longitude	Latitude
MH-GN-GN	Gormanstown	<i>Ensis siliqua</i>	-6.09556	53.64667

Production Area: **LH-DB**Location: **Dundalk Bay**

Production area is defined as area inside boundary line:

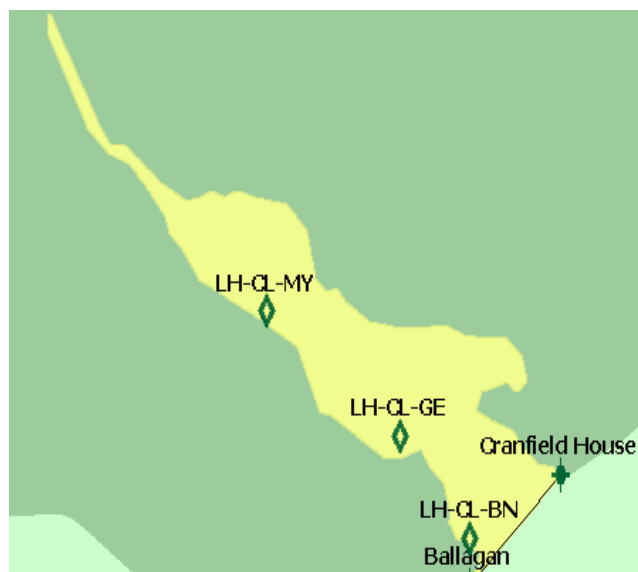
From Point A to Point B to Point C to Ballagan as shown on chart, up to and including the mean high water mark and coordinates defined as:

Name	Longitude	Latitude
A	-6.256	53.817
B	-6	53.817
C	-6	53.79
D	-6.221	53.79

Sample Points:

Location Code	Location	Species	Longitude	Latitude
LH-DB-DY	Dunany	<i>Magallana gigas</i>	-6.28806	53.87778
LH-DB-SN	Salterstown	<i>Ensis siliqua</i>	-6.12667	53.84278
LH-DB-DB	Dundalk Bay	<i>Cerastoderma edule</i>	-6.2864	53.9775
LH-DB-AN	Annagassan	<i>Cerastoderma edule</i>	-6.3	53.955

Note: Coordinates are expressed as decimalised longitude and latitude

Production Area: **LH-CL**Location: **Carlingford Lough**

Production area is defined as area inside boundary line:

From Ballagan to Cranfield House as shown on chart, up to and including the mean high water mark and coordinates defined as:

Name	Longitude	Latitude
Ballagan	-6.10653	53.99345
Cranfield House	-6.06102	54.02344

Sample Points:

Location Code	Location	Species	Longitude	Latitude
LH-CL-GE	Greenore	<i>Magallana gigas</i>	-6.14167	54.03389
LH-CL-MY	McCarthy	<i>Mytilus edulis</i>	-6.20806	54.06778
LH-CL-BN	Ballagan	<i>Ensis siliqua</i>	-6.106	54.006

Note: Coordinates are expressed as decimalised longitude and latitude

Production Area: **OS-NM**

Location: **North of Malin Head**
ICES Rectangle (40-E2)



Production area is defined as area inside boundary line:

Within the coordinates of the ICES Rectangle as shown on the chart.

Sample Points:

Location Code	Location
OS-NM-NM	North of Malin Head

Single sample to be taken within the coordinates of the rectangle.

Production Area: **OS-WD**

Location: **West of Donegal**
ICES Rectangle (39-D9)



Production area is defined as area inside boundary line:

Within the coordinates of the ICES Rectangle as shown on the chart.

Sample Points:

Location Code	Location
OS-WD-WD	West of Donegal

Single sample to be taken within the coordinates of the rectangle.

Production Area: **OS-DG**

Location: **Donegal Ground**
ICES Rectangle (39-E0)



Production area is defined as area inside boundary line:

Within the coordinates of the ICES Rectangle as shown on the chart.

Sample Points:

Location Code	Location
OS-DG-DG	Donegal Ground

Single sample to be taken within the coordinates of the rectangle.

Production Area: **OS-TI**

Location: **Tory Island Ground**
ICES Rectangle (39-E1)



Production area is defined as area inside boundary line:

Within the coordinates of the ICES Rectangle as shown on the chart, up to and including the mean high water mark where rectangle intersects coastline.

Sample Points:

Location Code	Location
OS-TI-TI	Tory Island Ground

Single sample to be taken within the coordinates of the rectangle.

Production Area: **OS-MN**Location: **Malin Head**
ICES Rectangle (39-E2)**Production area is defined as area inside boundary line:**

Within the coordinates of the ICES Rectangle as shown on the chart, up to and including the mean high water mark where rectangle intersects coastline.

Sample Points:

Location Code	Location
OS-MN-MN	Malin Head

Single sample to be taken within the coordinates of the rectangle.

Production Area: **OS-MG**Location: **Middle Ground**
ICES Rectangle (39-E3)**Production area is defined as area inside boundary line:**

Within the coordinates of the ICES Rectangle as shown on the chart, up to and including the mean high water mark where rectangle intersects coastline.

Sample Points:

Location Code	Location
OS-MG-MG	Middle Ground

Single sample to be taken within the coordinates of the rectangle.

Production Area: **OS-MS**

Location: **Mermaid Shoal Ground**
ICES Rectangle (39-E4)



Production area is defined as area inside boundary line:

Within the coordinates of the ICES Rectangle as shown on the chart, up to and including the mean high water mark where rectangle intersects coastline.

Sample Points:

Location Code	Location
OS-MS-MS	Mermaid Shoal Ground

Single sample to be taken within the coordinates of the rectangle.

Production Area: **OS-EM**

Location: **East of Mermaid Shoal Ground**
ICES Rectangle (39-E5)



Production area is defined as area inside boundary line:

Within the coordinates of the ICES Rectangle as shown on the chart, up to and including the mean high water mark where rectangle intersects coastline.

Sample Points:

Location Code	Location
OS-EM-EM	East of Mermaid Shoal Ground - VIA

Single sample to be taken within the coordinates of the rectangle.

Production Area: **OS-WK**

Location: **West of Killybegs Ground**
ICES Rectangle (38-E0)



Production area is defined as area inside boundary line:

Within the coordinates of the ICES Rectangle as shown on the chart.

Sample Points:

Location Code	Location
OS-WK-WK	West of Killybegs Ground

Single sample to be taken within the coordinates of the rectangle.

Production Area: **OS-KG**

Location: **Killybegs Ground**
ICES Rectangle (38-E1)



Production area is defined as area inside boundary line:

Within the coordinates of the ICES Rectangle as shown on the chart, up to and including the mean high water mark where rectangle intersects coastline.

Sample Points:

Location Code	Location
OS-KG-KG	Killybegs Ground

Single sample to be taken within the coordinates of the rectangle.

Production Area: OS-RB
Location: Riggs Bank
ICES Rectangle (38-E4)

Production area is defined as area inside boundary line:

Within the coordinates of the ICES Rectangle as shown on the chart, up to and including the mean high water mark where rectangle intersects coastline.

Sample Points:

Location Code	Location
OS-RB-RB	Riggs Bank

Single sample to be taken within the coordinates of the rectangle.

Production Area: OS-PW
Location: Port William Ground
ICES Rectangle (38-E5)

Production area is defined as area inside boundary line:

Within the coordinates of the ICES Rectangle as shown on the chart, up to and including the mean high water mark where rectangle intersects coastline.

Sample Points:

Location Code	Location
OS-PW-PW	Port William Ground

Single sample to be taken within the coordinates of the rectangle.

Production Area: **OS-BT**

Location: **Belmullet**
ICES Rectangle (37-D9)



Production area is defined as area inside boundary line:

Within the coordinates of the ICES Rectangle as shown on the chart, up to and including the mean high water mark where rectangle intersects coastline.

Sample Points:

Location Code	Location
OS-BT-BT	Belmullet

Single sample to be taken within the coordinates of the rectangle.

Production Area: **OS-NK**

Location: **North of Killalla Bay**
ICES Rectangle (37-E0)



Production area is defined as area inside boundary line:

Within the coordinates of the ICES Rectangle as shown on the chart, up to and including the mean high water mark where rectangle intersects coastline.

North	South	East	West
54.5	54	9	10

Sample Points:

Location Code	Location
OS-NK-NK	North of Killalla Bay

Single sample to be taken within the coordinates of the rectangle.

Production Area: OS-SG
Location: Sligo Ground
ICES Rectangle (37-E1)

Production area is defined as area inside boundary line:

Within the coordinates of the ICES Rectangle as shown on the chart, up to and including the mean high water mark where rectangle intersects coastline.

North	South	East	West
54.5	54	8	9

Sample Points:

Location Code	Location
OS-SG-SG	Sligo Ground

Single sample to be taken within the coordinates of the rectangle.

Production Area: OS-AB
Location: Ardglass Bank
ICES Rectangle (37-E4)

Production area is defined as area inside boundary line:

Within the coordinates of the ICES Rectangle as shown on the chart, up to and including the mean high water mark where rectangle intersects coastline.

North	South	East	West
54.5	54	5	6

Sample Points:

Location Code	Location
OS-AB-AB	Ardglass Bank

Single sample to be taken within the coordinates of the rectangle.

Production Area: **OS-IM**Location: **Isle of Man Ground**
ICES Rectangle (37-E5)**Production area is defined as area inside boundary line:**

Within the coordinates of the ICES Rectangle as shown on the chart, up to and including the mean high water mark where rectangle intersects coastline.

North	South	East	West
54.5	54	4	5

Sample Points:

Location Code	Location
OS-IM-IM	Isle of Man Ground

Single sample to be taken within the coordinates of the rectangle.

Production Area: **OS-EI**Location: **East of Isle of Man**
ICES Rectangle (37-E6)**Production area is defined as area inside boundary line:**

Within the coordinates of the ICES Rectangle as shown on the chart, up to and including the mean high water mark where rectangle intersects coastline.

North	South	East	West
54.5	54	3	4

Sample Points:

Location Code	Location
OS-EI-EI	East of Isle of Man

Single sample to be taken within the coordinates of the rectangle.

Production Area: **OS-WC**Location: **West of Clew Bay**
ICES Rectangle (36-D9)**Production area is defined as area inside boundary line:**

Within the coordinates of the ICES Rectangle as shown on the chart, up to and including the mean high water mark where rectangle intersects coastline.

North	South	East	West
54	53.5	10	11

Sample Points:

Location Code	Location
OS-WC-WC	West of Clew Bay

Single sample to be taken within the coordinates of the rectangle.

Production Area: **OS-CG**Location: **Clogherhead Ground**
ICES Rectangle (36-E3)**Production area is defined as area inside boundary line:**

Within the coordinates of the ICES Rectangle as shown on the chart, up to and including the mean high water mark where rectangle intersects coastline.

North	South	East	West
54	53.5	6	7

Sample Points:

Location Code	Location
OS-CG-CG	Clogherhead Ground

Single sample to be taken within the coordinates of the rectangle.

Production Area: **OS-EC**

Location: **East of Clogherhead**
ICES Rectangle (36-E4)



Production area is defined as area inside boundary line:

Within the coordinates of the ICES Rectangle as shown on the chart.

North	South	East	West
54	53.5	5	6

Sample Points:

Location Code	Location
OS-EC-EC	East of Clogherhead

Single sample to be taken within the coordinates of the rectangle.

Production Area: **OS-SI**

Location: **South of Isle of Man**
ICES Rectangle (36-E5)



Production area is defined as area inside boundary line:

Within the coordinates of the ICES Rectangle as shown on the chart.

North	South	East	West
54	53.5	4	5

Sample Points:

Location Code	Location
OS-SI-SI	South of Isle of Man

Single sample to be taken within the coordinates of the rectangle.

Production Area: **OS-MB**

Location: **Morecambe Bay**
ICES Rectangle (36-E6)



Production area is defined as area inside boundary line:

Within the coordinates of the ICES Rectangle as shown on the chart, up to and including the mean high water mark where rectangle intersects coastline.

North	South	East	West
54	53.5	3	4

Sample Points:

Location Code	Location
OS-MB-MB	Morecambe Bay

Single sample to be taken within the coordinates of the rectangle.

Production Area: **OS-WG**

Location: **West of Galway Bay**
ICES Rectangle (35-D9)



Production area is defined as area inside boundary line:

Within the coordinates of the ICES Rectangle as shown on the chart, up to and including the mean high water mark where rectangle intersects coastline.

North	South	East	West
53.5	53	10	11

Sample Points:

Location Code	Location
OS-WG-WG	West of Galway Bay

Single sample to be taken within the coordinates of the rectangle.

Production Area: **OS-GB**Location: **Galway Bay Ground**
ICES Rectangle (35-E0)**Production area is defined as area inside boundary line:**

Within the coordinates of the ICES Rectangle as shown on the chart, up to and including the mean high water mark where rectangle intersects coastline.

North	South	East	West
53.5	53	9	10

Sample Points:

Location Code	Location
OS-GB-GB	Galway Bay Ground

Single sample to be taken within the coordinates of the rectangle.

Production Area: **OS-DE**Location: **Dunlaoghaire Ground**
ICES Rectangle (35-E3)**Production area is defined as area inside boundary line:**

Within the coordinates of the ICES Rectangle as shown on the chart, up to and including the mean high water mark where rectangle intersects coastline.

North	South	East	West
53.5	53	6	7

Sample Points:

Location Code	Location
OS-DE-DE	Dunlaoghaire Ground

Single sample to be taken within the coordinates of the rectangle.

Production Area: **OS-ED**Location: **East of Dunlaoghaire Ground**
ICES Rectangle (35-E4)**Production area is defined as area inside boundary line:**

Within the coordinates of the ICES Rectangle as shown on the chart, up to and including the mean high water mark where rectangle intersects coastline.

North	South	East	West
53.5	53	5	6

Sample Points:

Location Code	Location
OS-ED-ED	East of Dunlaoghaire Ground

Single sample to be taken within the coordinates of the rectangle.

Production Area: **OS-AG**Location: **Anglesley Ground**
ICES Rectangle (35-E5)**Production area is defined as area inside boundary line:**

Within the coordinates of the ICES Rectangle as shown on the chart, up to and including the mean high water mark where rectangle intersects coastline.

North	South	East	West
53.5	53	4	5

Sample Points:

Location Code	Location
OS-AG-AG	Anglesley Ground

Single sample to be taken within the coordinates of the rectangle.

Production Area: **OS-LP**Location: **Liverpool Bay**
ICES Rectangle (35-E6)**Production area is defined as area inside boundary line:**

Within the coordinates of the ICES Rectangle as shown on the chart, up to and including the mean high water mark where rectangle intersects coastline.

North	South	East	West
53.5	53	3	4

Sample Points:

Location Code	Location
OS-LP-LP	Liverpool Bay

Single sample to be taken within the coordinates of the rectangle.

Production Area: **OS-WL**Location: **West of Loop Head**
ICES Rectangle (34-D9)**Production area is defined as area inside boundary line:**

Within the coordinates of the ICES Rectangle as shown on the chart.

North	South	East	West
53.5	52.5	10	11

Sample Points:

Location Code	Location
OS-WL-WL	West of Loop Head

Single sample to be taken within the coordinates of the rectangle.

Production Area: **OS-LH**Location: **Loop Head Ground**
ICES Rectangle (34-E0)**Production area is defined as area inside boundary line:**

Within the coordinates of the ICES Rectangle as shown on the chart, up to and including the mean high water mark where rectangle intersects coastline.

North	South	East	West
53	52.5	9	10

Sample Points:

Location Code	Location
OS-LH-LH	Loop Head Ground

Single sample to be taken within the coordinates of the rectangle.

Production Area: **OS-AW**Location: **Arklow Ground**
ICES Rectangle (34-E3)**Production area is defined as area inside boundary line:**

Within the coordinates of the ICES Rectangle as shown on the chart, up to and including the mean high water mark where rectangle intersects coastline.

North	South	East	West
53	52.5	6	7

Sample Points:

Location Code	Location
OS-AW-AW	Arklow Ground

Single sample to be taken within the coordinates of the rectangle.

Production Area: OS-EA**Location: East of Arklow Ground
ICES Rectangle (34-E4)****Production area is defined as area inside boundary line:**

Within the coordinates of the ICES Rectangle as shown on the chart, up to and including the mean high water mark where rectangle intersects coastline.

North	South	East	West
53	52.5	5	6

Sample Points:

Location Code	Location
OS-EA-EA	East of Arklow Ground

Single sample to be taken within the coordinates of the rectangle.

Production Area: OS-DT**Location: Devil's Tail Ground
ICES Rectangle (34-E5)****Production area is defined as area inside boundary line:**

Within the coordinates of the ICES Rectangle as shown on the chart, up to and including the mean high water mark where rectangle intersects coastline.

North	South	East	West
53	52.5	4	5

Sample Points:

Location Code	Location
OS-DT-DT	Devil's Tail Ground

Single sample to be taken within the coordinates of the rectangle.

Production Area: OS-DL
Location: Dingle Ground
ICES Rectangle (33-D9)

Production area is defined as area inside boundary line:

Within the coordinates of the ICES Rectangle as shown on the chart, up to and including the mean high water mark where rectangle intersects coastline.

North	South	East	West
52.5	52	10	11

Sample Points:

Location Code	Location
OS-DL-DL	Dingle Ground

Single sample to be taken within the coordinates of the rectangle.

Production Area: OS-HV
Location: Helvic Ground
ICES Rectangle (33-E2)

Production area is defined as area inside boundary line:

Within the coordinates of the ICES Rectangle as shown on the chart, up to and including the mean high water mark where rectangle intersects coastline.

North	South	East	West
52.5	52	7	8

Sample Points:

Location Code	Location
OS-HV-HV	Helvic Ground

Single sample to be taken within the coordinates of the rectangle.

Production Area: **OS-WD**Location: **Wexford Ground**
ICES Rectangle (33-E3)**Production area is defined as area inside boundary line:**

Within the coordinates of the ICES Rectangle as shown on the chart, up to and including the mean high water mark where rectangle intersects coastline.

North	South	East	West
52.5	52	6	7

Sample Points:

Location Code	Location
OS-WD-WD	Wexford Ground

Single sample to be taken within the coordinates of the rectangle.

Production Area: **OS-EW**Location: **East of Wexford Ground**
ICES Rectangle (33-E4)**Production area is defined as area inside boundary line:**

Within the coordinates of the ICES Rectangle as shown on the chart, up to and including the mean high water mark where rectangle intersects coastline.

North	South	East	West
52.5	52	5	6

Sample Points:

Location Code	Location
OS-EW-EW	East of Wexford Ground

Single sample to be taken within the coordinates of the rectangle.

Production Area: **OS-NQ**Location: **New Quay Bay**
ICES Rectangle (33-E5)**Production area is defined as area inside boundary line:**

Within the coordinates of the ICES Rectangle as shown on the chart, up to and including the mean high water mark where rectangle intersects coastline.

North	South	East	West
52.5	52	4	5

Sample Points:

Location Code	Location
OS-NQ-NQ	New Quay Bay

Single sample to be taken within the coordinates of the rectangle.

Production Area: **OS-VG**Location: **Valentina Ground**
ICES Rectangle (32-D9)**Production area is defined as area inside boundary line:**

Within the coordinates of the ICES Rectangle as shown on the chart, up to and including the mean high water mark where rectangle intersects coastline.

North	South	East	West
52	51.5	10	11

Sample Points:

Location Code	Location
OS-VG-VG	Valentina Ground

Single sample to be taken within the coordinates of the rectangle.

Production Area: **OS-KE**Location: **Kinsale Ground**
ICES Rectangle (32-E1)**Production area is defined as area inside boundary line:**

Within the coordinates of the ICES Rectangle as shown on the chart, up to and including the mean high water mark where rectangle intersects coastline.

North	South	East	West
52	51.5	8	9

Sample Points:

Location Code	Location
OS-KE-KE	Kinsale Ground

Single sample to be taken within the coordinates of the rectangle.

Production Area: **OS-MH**Location: **Mine Head Ground**
ICES Rectangle (32-E2)**Production area is defined as area inside boundary line:**

Within the coordinates of the ICES Rectangle as shown on the chart, up to and including the mean high water mark where rectangle intersects coastline.

North	South	East	West
52	51.5	7	8

Sample Points:

Location Code	Location
OS-MH-MH	Mine Head Ground

Single sample to be taken within the coordinates of the rectangle.

Production Area: **OS-SS**

Location: **Saltees Ground**
ICES Rectangle (32-E3)



Production area is defined as area inside boundary line:

Within the coordinates of the ICES Rectangle as shown on the chart.

North	South	East	West
52	51.5	6	7

Sample Points:

Location Code	Location
OS-SS-SS	Saltees Ground

Single sample to be taken within the coordinates of the rectangle.

Production Area: **OS-SD**

Location: **Smalls Ground;**
ICES Rectangle (32-E4)



Production area is defined as area inside boundary line:

Within the coordinates of the ICES Rectangle as shown on the chart, up to and including the mean high water mark where rectangle intersects coastline.

North	South	East	West
52	51.5	5	6

Sample Points:

Location Code	Location
OS-SD-SD	Smalls Ground

Single sample to be taken within the coordinates of the rectangle.

Location: **English Channel**
ICES Rectangle (32-E5)



Production area is defined as area inside boundary line:

Within the coordinates of the ICES Rectangle as shown on the chart, up to and including the mean high water mark where rectangle intersects coastline.

Sample Points:

Location Code	Location
OS-32-E5	English Channel - VIIF

Single sample to be taken within the coordinates of the rectangle.

Location: **English Channel**
ICES Rectangle (32-E6)



Production area is defined as area inside boundary line:

Within the coordinates of the ICES Rectangle as shown on the chart, up to and including the mean high water mark where rectangle intersects coastline.

Sample Points:

Location Code	Location
OS-32-E6	English Channel - VIIF

Single sample to be taken within the coordinates of the rectangle.

Location: **English Channel**
ICES Rectangle (32-E7)



Production area is defined as area inside boundary line:

Within the coordinates of the ICES Rectangle as shown on the chart, up to and including the mean high water mark where rectangle intersects coastline.

Sample Points:

Location Code	Location
OS-32-E7	English Channel - VIIF

Single sample to be taken within the coordinates of the rectangle.

Production Area: **OS-HB**

Location: **Hurd Bank**
ICES Rectangle (31-D9)



Production area is defined as area inside boundary line:

Within the coordinates of the ICES Rectangle as shown on the chart.

North	South	East	West
51.5	51	10	11

Sample Points:

Location Code	Location
OS-HB-HB	Hurd Bank

Single sample to be taken within the coordinates of the rectangle.

Production Area: **OS-FG**

Location: **Fastnet Ground**
ICES Rectangle (31-E0)



Production area is defined as area inside boundary line:

Within the coordinates of the ICES Rectangle as shown on the chart, up to and including the mean high water mark where rectangle intersects coastline.

North	South	East	West
51.5	51	9	10

Sample Points:

Location Code	Location
OS-FG-FG	Fastnet Ground

Single sample to be taken within the coordinates of the rectangle.

Production Area: **OS-SK**

Location: **South of Kinsale Ground**
ICES Rectangle (31-E1)



Production area is defined as area inside boundary line:

Within the coordinates of the ICES Rectangle as shown on the chart.

North	South	East	West
51.5	51	8	9

Sample Points:

Location Code	Location
OS-SK-SK	South of Kinsale Ground

Single sample to be taken within the coordinates of the rectangle.

Production Area: **OS-SM**Location: **South of Mine Head Ground**
ICES Rectangle (31-E2)**Production area is defined as area inside boundary line:**

Within the coordinates of the ICES Rectangle as shown on the chart.

North	South	East	West
51.5	51	7	8

Sample Points:

Location Code	Location
OS-SM-SM	South of Mine Head Ground

Single sample to be taken within the coordinates of the rectangle.

Production Area: **OS-SL**Location: **South of Smalls Ground**
ICES Rectangle (31-E3)**Production area is defined as area inside boundary line:**

Within the coordinates of the ICES Rectangle as shown on the chart.

North	South	East	West
51.5	51	6	7

Sample Points:

Location Code	Location
OS-SL-SL	South of Smalls Ground

Single sample to be taken within the coordinates of the rectangle.

Production Area: **OS-SB**

Location: **Stanley Bay**
ICES Rectangle (31-E4)



Production area is defined as area inside boundary line:

Within the coordinates of the ICES Rectangle as shown on the chart.

North	South	East	West
51.5	51	5	6

Sample Points:

Location Code	Location
OS-SB-SB	Stanley Bay

Single sample to be taken within the coordinates of the rectangle.

Production Area: **OS-LI**

Location: **Lundy Island**
ICES Rectangle (31-E5)



Production area is defined as area inside boundary line:

Within the coordinates of the ICES Rectangle as shown on the chart, up to and including the mean high water mark where rectangle intersects coastline.

North	South	East	West
51.5	51	4	5

Sample Points:

Location Code	Location
OS-LI-LI	Lundy Island

Single sample to be taken within the coordinates of the rectangle.

Location: **English Channel**
ICES Rectangle (31-E6)



Production area is defined as area inside boundary line:

Within the coordinates of the ICES Rectangle as shown on the chart, up to and including the mean high water mark where rectangle intersects coastline.

Sample Points:

Location Code	Location
OS-31-E6	English Channel

Single sample to be taken within the coordinates of the rectangle.

Production Area: **OS-LB**

Location: **Labadie Bank**
ICES Rectangle (30-E1)



Production area is defined as area inside boundary line:

Within the coordinates of the ICES Rectangle as shown on the chart.

North	South	East	West
51	50.5	8	9

Sample Points:

Location Code	Location
OS-LB-LB	Labadie Bank

Single sample to be taken within the coordinates of the rectangle.

Production Area: **OS-EL**

Location: **East of Labadie Bank**
ICES Rectangle (30-E2)



Production area is defined as area inside boundary line:

Within the coordinates of the ICES Rectangle as shown on the chart.

North	South	East	West
51	50.5	7	8

Sample Points:

Location Code	Location
OS-EL-EL	East of Labadie Bank

Single sample to be taken within the coordinates of the rectangle.

Production Area: **OS-NN**

Location: **Northwest of Newlyn**
ICES Rectangle (30-E3)



Production area is defined as area inside boundary line:

Within the coordinates of the ICES Rectangle as shown on the chart.

North	South	East	West
51	50.5	6	7

Sample Points:

Location Code	Location
OS-NN-NN	Northwest of Newlyn

Single sample to be taken within the coordinates of the rectangle.

Production Area: OS-NT
**Location: North of Newlyn
ICES Rectangle (30-E4)**

Production area is defined as area inside boundary line:

Within the coordinates of the ICES Rectangle as shown on the chart.

North	South	East	West
51	50.5	5	6

Sample Points:

Location Code	Location
OS-NT-NT	North of Newlyn

Single sample to be taken within the coordinates of the rectangle.

**Location: English Channel
ICES Rectangle (30-E5)**

Production area is defined as area inside boundary line:

Within the coordinates of the ICES Rectangle as shown on the chart, up to and including the mean high water mark where rectangle intersects coastline.

Sample Points:

Location Code	Location
OS-30-E5	English Channel - VIIF

Single sample to be taken within the coordinates of the rectangle.

Location: **English Channel**
ICES Rectangle (30-E6)



Production area is defined as area inside boundary line:

Within the coordinates of the ICES Rectangle as shown on the chart, up to and including the mean high water mark where rectangle intersects coastline.

Sample Points:

Location Code	Location
OS-30-E6	English Channel

Single sample to be taken within the coordinates of the rectangle.

Location: **English Channel**
ICES Rectangle (30-E7)



Production area is defined as area inside boundary line:

Within the coordinates of the ICES Rectangle as shown on the chart, up to and including the mean high water mark where rectangle intersects coastline.

Sample Points:

Location Code	Location
OS-30-E7	English Channel

Single sample to be taken within the coordinates of the rectangle.

Location: **English Channel**
ICES Rectangle (30-E8)



Production area is defined as area inside boundary line:

Within the coordinates of the ICES Rectangle as shown on the chart, up to and including the mean high water mark where rectangle intersects coastline.

Sample Points:

Location Code	Location
OS-30-E8	English Channel

Single sample to be taken within the coordinates of the rectangle.

Location: **English Channel**
ICES Rectangle (30-E9)



Production area is defined as area inside boundary line:

Within the coordinates of the ICES Rectangle as shown on the chart, up to and including the mean high water mark where rectangle intersects coastline.

Sample Points:

Location Code	Location
OS-30-E9	English Channel - VIID

Single sample to be taken within the coordinates of the rectangle.

Location: **English Channel**
ICES Rectangle (30-F0)



Production area is defined as area inside boundary line:

Within the coordinates of the ICES Rectangle as shown on the chart, up to and including the mean high water mark where rectangle intersects coastline.

Sample Points:

Location Code	Location
OS-30-F0	English Channel

Single sample to be taken within the coordinates of the rectangle.

Location: **English Channel**
ICES Rectangle (30-F1)



Production area is defined as area inside boundary line:

Within the coordinates of the ICES Rectangle as shown on the chart, up to and including the mean high water mark where rectangle intersects coastline.

Sample Points:

Location Code	Location
OS-30-F1	English Channel - VIID

Single sample to be taken within the coordinates of the rectangle.

Location: **English Channel**
ICES Rectangle (29-E0)



Production area is defined as area inside boundary line:

Within the coordinates of the ICES Rectangle as shown on the chart.

Sample Points:

Location Code	Location
OS-29-E0	English Channel - VIID

Single sample to be taken within the coordinates of the rectangle.

Production Area: **OS-WB**

Location: **West Bank**
ICES Rectangle (29-E1)



Production area is defined as area inside boundary line:

Within the coordinates of the ICES Rectangle as shown on the chart.

North	South	East	West
50.5	50	8	9

Sample Points:

Location Code	Location
OS-WB-WB	West Bank

Single sample to be taken within the coordinates of the rectangle.

Production Area: **OS-NB**Location: **Northwest Bank**
ICES Rectangle (29-E2)

Production area is defined as area inside boundary line:

Within the coordinates of the ICES Rectangle as shown on the chart.

North	South	East	West
50.5	50	7	8

Sample Points:

Location Code	Location
OS-NB-NB	Northwest Bank

Single sample to be taken within the coordinates of the rectangle.

Production Area: **OS-WN**Location: **West of Newlyn**
ICES Rectangle (29-E3)

Production area is defined as area inside boundary line:

Within the coordinates of the ICES Rectangle as shown on the chart, up to and including the mean high water mark where rectangle intersects coastline.

North	South	East	West
50.5	50	6	7

Sample Points:

Location Code	Location
OS-WN-WN	West of Newlyn

Single sample to be taken within the coordinates of the rectangle.

Production Area: **OS-NL**

Location: **Newlyn**
ICES Rectangle (29-E4)



Production area is defined as area inside boundary line:

Within the coordinates of the ICES Rectangle as shown on the chart, up to and including the mean high water mark where rectangle intersects coastline.

North	South	East	West
50.5	50	5	6

Sample Points:

Location Code	Location
OS-NL-NL	Newlyn

Single sample to be taken within the coordinates of the rectangle.

Location: **English Channel**
ICES Rectangle (29-E5)



Production area is defined as area inside boundary line:

Within the coordinates of the ICES Rectangle as shown on the chart, up to and including the mean high water mark where rectangle intersects coastline.

Sample Points:

Location Code	Location
OS-29-E5	English Channel - VIIE

Single sample to be taken within the coordinates of the rectangle.

Location: **English Channel**
ICES Rectangle (29-E6)



Production area is defined as area inside boundary line:

Within the coordinates of the ICES Rectangle as shown on the chart, up to and including the mean high water mark where rectangle intersects coastline.

Sample Points:

Location Code	Location
OS-29-E6	English Channel

Single sample to be taken within the coordinates of the rectangle.

Location: **English Channel**
ICES Rectangle (29-E7)



Production area is defined as area inside boundary line:

Within the coordinates of the ICES Rectangle as shown on the chart.

Sample Points:

Location Code	Location
OS-29-E7	English Channel

Single sample to be taken within the coordinates of the rectangle.

Location: **English Channel**
ICES Rectangle (29-E8)



Production area is defined as area inside boundary line:

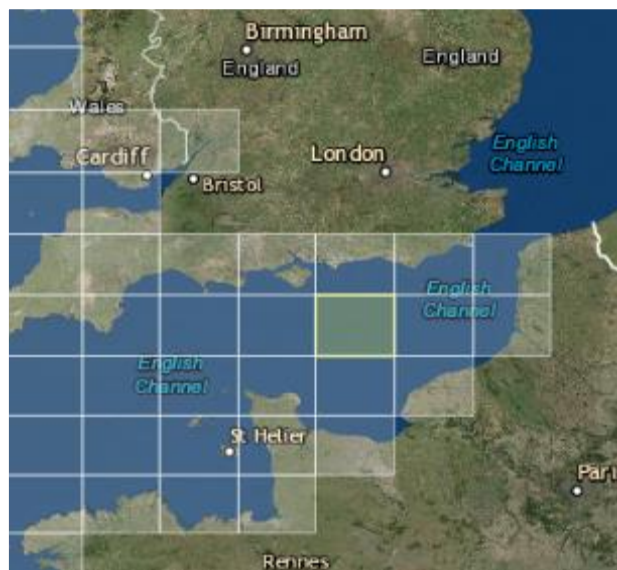
Within the coordinates of the ICES Rectangle as shown on the chart.

Sample Points:

Location Code	Location
OS-29-E8	English Channel

Single sample to be taken within the coordinates of the rectangle.

Location: **English Channel**
ICES Rectangle (29-E9)



Production area is defined as area inside boundary line:

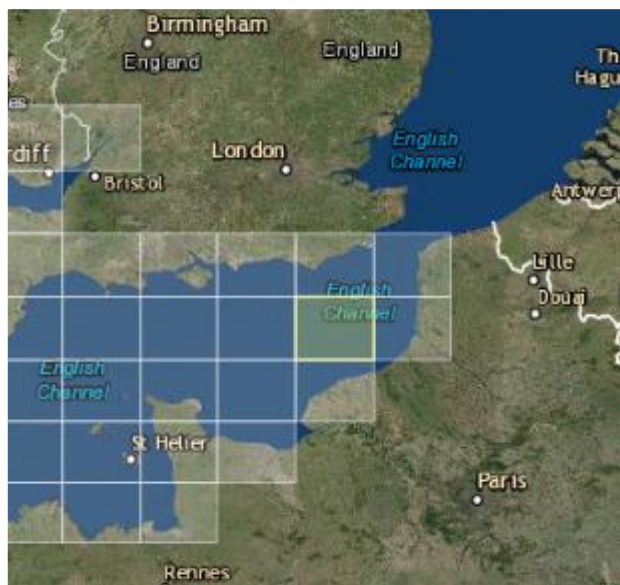
Within the coordinates of the ICES Rectangle as shown on the chart.

Sample Points:

Location Code	Location
OS-29-E9	English Channel - VIID

Single sample to be taken within the coordinates of the rectangle.

Location: **English Channel**
ICES Rectangle (29-F0)



Production area is defined as area inside boundary line:

Within the coordinates of the ICES Rectangle as shown on the chart.

Sample Points:

Location Code	Location
OS-29-F0	English Channel

Single sample to be taken within the coordinates of the rectangle.

Location: **English Channel**
ICES Rectangle (29-F1)



Production area is defined as area inside boundary line:

Within the coordinates of the ICES Rectangle as shown on the chart, up to and including the mean high water mark where rectangle intersects coastline.

Sample Points:

Location Code	Location
OS-29-F1	English Channel - VIID

Single sample to be taken within the coordinates of the rectangle.

Production Area: OS-CB
**Location: Cockburn Bank
ICES Rectangle (28-E0)**


Production area is defined as area inside boundary line:

Within the coordinates of the ICES Rectangle as shown on the chart.

North	South	East	West
50	49.5	9	10

Sample Points:

Location Code	Location
OS-CB-CB	Cockburn Bank

Single sample to be taken within the coordinates of the rectangle.

Production Area: OS-WJ
**Location: Western Jones Bank
ICES Rectangle (28-E1)**


Production area is defined as area inside boundary line:

Within the coordinates of the ICES Rectangle as shown on the chart.

North	South	East	West
50	49.5	8	9

Sample Points:

Location Code	Location
OS-WJ-WJ	Western Jones Bank

Single sample to be taken within the coordinates of the rectangle.

Production Area: **OS-EJ**

Location: **Eastern Jones Bank**
ICES Rectangle (28-E2)



Production area is defined as area inside boundary line:

Within the coordinates of the ICES Rectangle as shown on the chart.

North	South	East	West
50	49.5	7	8

Sample Points:

Location Code	Location
OS-EJ-EJ	Eastern Jones Bank

Single sample to be taken within the coordinates of the rectangle.

Production Area: **OS-IS**

Location: **Isles of Scilly**
ICES Rectangle (28-E3)



Production area is defined as area inside boundary line:

Within the coordinates of the ICES Rectangle as shown on the chart, up to and including the mean high water mark where rectangle intersects coastline.

North	South	East	West
50	49.5	6	7

Sample Points:

Location Code	Location
OS-IS-IS	Isles of Scilly

Single sample to be taken within the coordinates of the rectangle.

Production Area: **OS-SN**

Location: **South of Newlyn**
ICES Rectangle (28-E4)



Production area is defined as area inside boundary line:

Within the coordinates of the ICES Rectangle as shown on the chart, up to and including the mean high water mark where rectangle intersects coastline.

North	South	East	West
50	49.5	5	6

Sample Points:

Location Code	Location
OS-SN-SN	South of Newlyn

Single sample to be taken within the coordinates of the rectangle.

Location: **English Channel**
ICES Rectangle (28-E5)



Production area is defined as area inside boundary line:

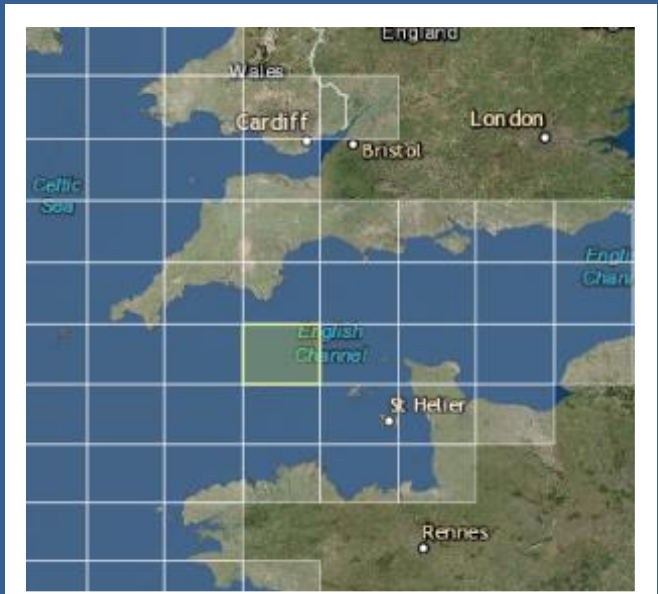
Within the coordinates of the ICES Rectangle as shown on the chart.

Sample Points:

Location Code	Location
OS-28-E5	English Channel - VIIE

Single sample to be taken within the coordinates of the rectangle.

Location: **English Channel**
ICES Rectangle (28-E6)



Production area is defined as area inside boundary line:

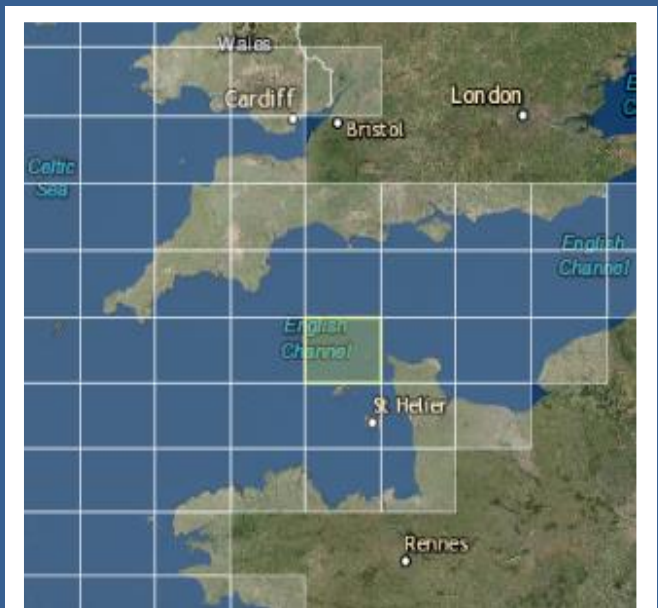
Within the coordinates of the ICES Rectangle as shown on the chart.

Sample Points:

Location Code	Location
OS-28-E6	English Channel

Single sample to be taken within the coordinates of the rectangle.

Location: **English Channel**
ICES Rectangle (28-E7)



Production area is defined as area inside boundary line:

Within the coordinates of the ICES Rectangle as shown on the chart, up to and including the mean high water mark where rectangle intersects coastline.

Sample Points:

Location Code	Location
OS-28-E7	English Channel

Single sample to be taken within the coordinates of the rectangle.

Location: **English Channel**
ICES Rectangle (28-E8)



Production area is defined as area inside boundary line:

Within the coordinates of the ICES Rectangle as shown on the chart, up to and including the mean high water mark where rectangle intersects coastline.

Sample Points:

Location Code	Location
OS-28-E8	English Channel

Single sample to be taken within the coordinates of the rectangle.

Location: **English Channel**
ICES Rectangle (28-E9)



Production area is defined as area inside boundary line:

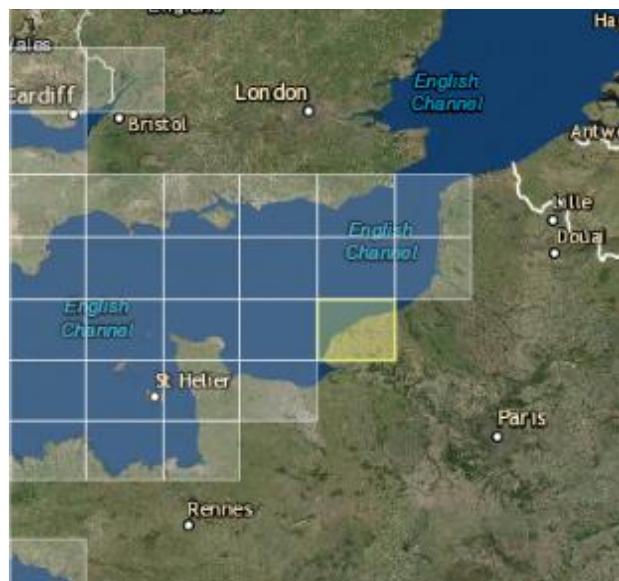
Within the coordinates of the ICES Rectangle as shown on the chart.

Sample Points:

Location Code	Location
OS-28-E9	English Channel - VIID

Single sample to be taken within the coordinates of the rectangle.

Location: **English Channel**
ICES Rectangle (28-F0)



Production area is defined as area inside boundary line:

Within the coordinates of the ICES Rectangle as shown on the chart, up to and including the mean high water mark where rectangle intersects coastline.

Sample Points:

Location Code	Location
OS-28-F0	English Channel - VIID

Single sample to be taken within the coordinates of the rectangle.

Location: **Western Approaches**
ICES Rectangle (27-E0)



Production area is defined as area inside boundary line:

Within the coordinates of the ICES Rectangle as shown on the chart.


Sample Points:

Location Code	Location
OS-27-E0	Western Approaches - VIID

Single sample to be taken within the coordinates of the rectangle.

Location:

Western Approaches
ICES Rectangle (27-E1)



Production area is defined as area inside boundary line:

Within the coordinates of the ICES Rectangle as shown on the chart.


Sample Points:

Location Code	Location
OS-27-E1	Western Approaches - VIIH

Single sample to be taken within the coordinates of the rectangle.

Location:

Western Approaches
ICES Rectangle (27-E2)



Production area is defined as area inside boundary line:

Within the coordinates of the ICES Rectangle as shown on the chart.

Sample Points:

Location Code	Location
OS-27-E2	Western Approaches - VIIH

Single sample to be taken within the coordinates of the rectangle.

Location: **Western Approaches**
ICES Rectangle (27-E3)



Production area is defined as area inside boundary line:

Within the coordinates of the ICES Rectangle as shown on the chart.

Sample Points:

Location Code	Location
OS-27-E3	Western Approaches - VIIH

Single sample to be taken within the coordinates of the rectangle.

Location: **Western Approaches**
ICES Rectangle (27-E4)



Production area is defined as area inside boundary line:

Within the coordinates of the ICES Rectangle as shown on the chart.

Sample Points:

Location Code	Location
OS-27-E4	Western Approaches - VIIH

Single sample to be taken within the coordinates of the rectangle.

Location: **English Channel**
ICES Rectangle (27-E5)



Production area is defined as area inside boundary line:

Within the coordinates of the ICES Rectangle as shown on the chart.

Sample Points:

Location Code	Location
OS-27-E5	English Channel

Single sample to be taken within the coordinates of the rectangle.

Location: **English Channel**
ICES Rectangle (27-E6)



Production area is defined as area inside boundary line:

Within the coordinates of the ICES Rectangle as shown on the chart.

Sample Points:

Location Code	Location
OS-27-E6	English Channel

Single sample to be taken within the coordinates of the rectangle.

Location: **English Channel**
ICES Rectangle (27-E7)



Production area is defined as area inside boundary line:

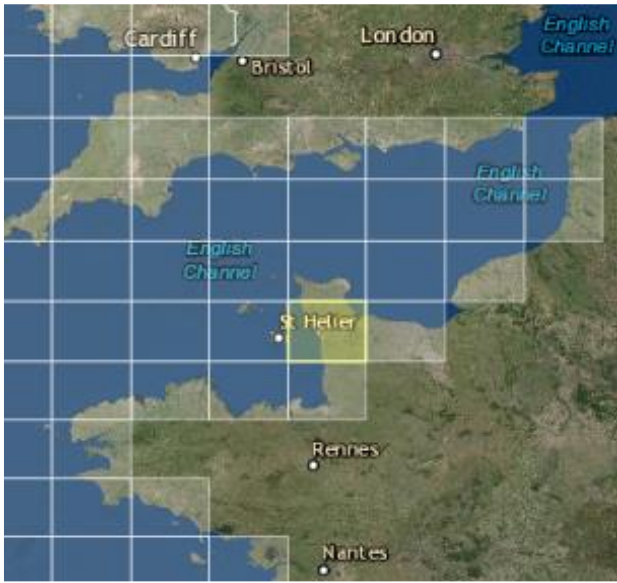
Within the coordinates of the ICES Rectangle as shown on the chart, up to and including the mean high water mark where rectangle intersects coastline.

Sample Points:

Location Code	Location
OS-27-E7	English Channel

Single sample to be taken within the coordinates of the rectangle.

Location: **English Channel**
ICES Rectangle (27-E8)



Production area is defined as area inside boundary line:

Within the coordinates of the ICES Rectangle as shown on the chart, up to and including the mean high water mark where rectangle intersects coastline.

Sample Points:

Location Code	Location
OS-27-E8	English Channel - VIIE

Single sample to be taken within the coordinates of the rectangle.

Location: **English Channel**
ICES Rectangle (27-E9)



Production area is defined as area inside boundary line:

Within the coordinates of the ICES Rectangle as shown on the chart, up to and including the mean high water mark where rectangle intersects coastline.

Sample Points:

Location Code	Location
OS-27-E9	English Channel - VIID

Single sample to be taken within the coordinates of the rectangle.

Location: **West of France**
ICES Rectangle (26-E0)



Production area is defined as area inside boundary line:

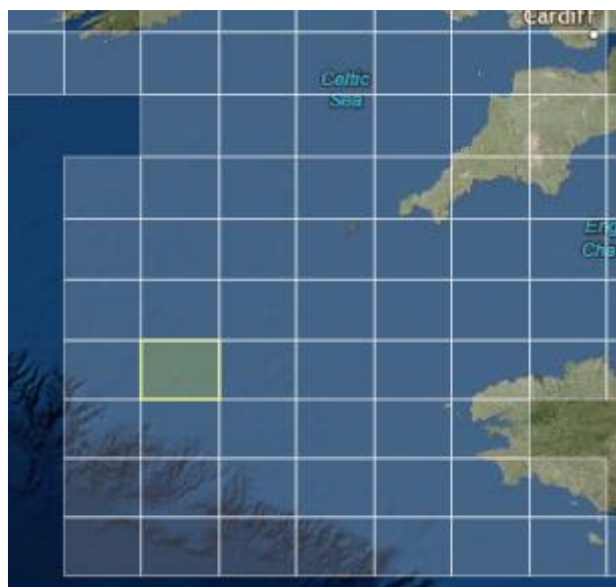
Within the coordinates of the ICES Rectangle as shown on the chart.

Sample Points:

Location Code	Location
OS-26-E0	West of France, VIJJ

Single sample to be taken within the coordinates of the rectangle.

Location: **West of France**
ICES Rectangle (26-E1)



Production area is defined as area inside boundary line:

Within the coordinates of the ICES Rectangle as shown on the chart.

Sample Points:

Location Code	Location
OS-26-E1	West of France, VIIH

Single sample to be taken within the coordinates of the rectangle.

Location: **West of France**
ICES Rectangle (26-E2)



Production area is defined as area inside boundary line:

Within the coordinates of the ICES Rectangle as shown on the chart.

Sample Points:

Location Code	Location
OS-26-E2	West of France, VIIH

Single sample to be taken within the coordinates of the rectangle.

Location: **West of France**
ICES Rectangle (26-E3)



Production area is defined as area inside boundary line:

Within the coordinates of the ICES Rectangle as shown on the chart.

Sample Points:

Location Code	Location
OS-26-E3	West of France, VIIH

Single sample to be taken within the coordinates of the rectangle.

Location: **West of France**
ICES Rectangle (26-E4)



Production area is defined as area inside boundary line:

Within the coordinates of the ICES Rectangle as shown on the chart.

Sample Points:

Location Code	Location
OS-26-E4	West of France, VIIH

Single sample to be taken within the coordinates of the rectangle.

Location: **West of France**
ICES Rectangle (26-E5)



Production area is defined as area inside boundary line:

Within the coordinates of the ICES Rectangle as shown on the chart, up to and including the mean high water mark where rectangle intersects coastline.

Sample Points:

Location Code	Location
OS-26-E5	West of France, VIIIE

Single sample to be taken within the coordinates of the rectangle.

Location: **English Channel**
ICES Rectangle (26-E6)



Production area is defined as area inside boundary line:

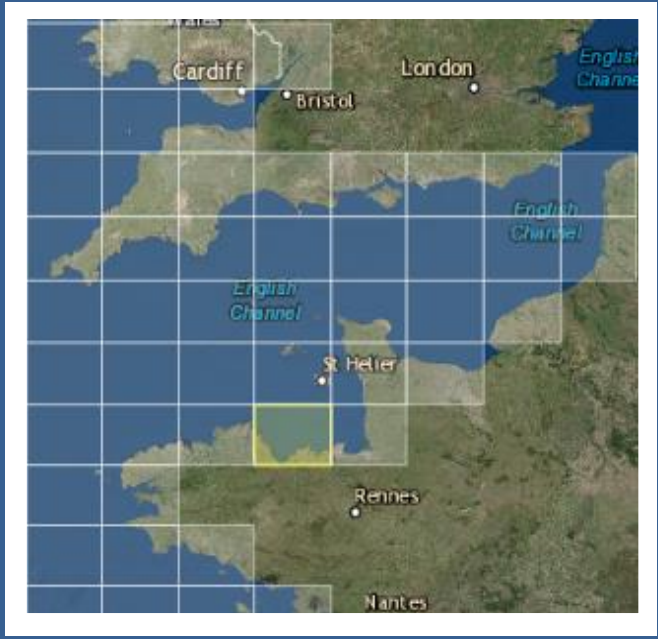
Within the coordinates of the ICES Rectangle as shown on the chart, up to and including the mean high water mark where rectangle intersects coastline.

Sample Points:

Location Code	Location
OS-26-E6	English Channel

Single sample to be taken within the coordinates of the rectangle.

Location: **English Channel**
ICES Rectangle (26-E7)



Production area is defined as area inside boundary line:

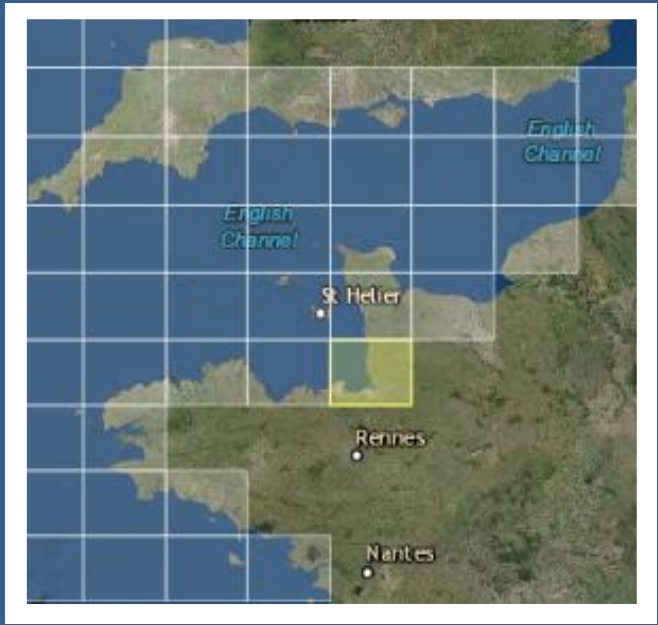
Within the coordinates of the ICES Rectangle as shown on the chart, up to and including the mean high water mark where rectangle intersects coastline.

Sample Points:

Location Code	Location
OS-26-E7	English Channel

Single sample to be taken within the coordinates of the rectangle.

Location: **English Channel**
ICES Rectangle (26-E8)



Production area is defined as area inside boundary line:

Within the coordinates of the ICES Rectangle as shown on the chart, up to and including the mean high water mark where rectangle intersects coastline.

Sample Points:

Location Code	Location
OS-26-E8	English Channel - VIIE

Single sample to be taken within the coordinates of the rectangle.

Location: **West of France**
ICES Rectangle (25-E0)



Production area is defined as area inside boundary line:

Within the coordinates of the ICES Rectangle as shown on the chart.

Sample Points:

Location Code	Location
OS-25-E0	West of France, VIJJ

Single sample to be taken within the coordinates of the rectangle.

Location: **West of France**
ICES Rectangle (25-E1)



Production area is defined as area inside boundary line:

Within the coordinates of the ICES Rectangle as shown on the chart.

Sample Points:

Location Code	Location
OS-25-E1	West of France, VIIH

Single sample to be taken within the coordinates of the rectangle.

Location: **West of France**
ICES Rectangle (25-E2)



Production area is defined as area inside boundary line:

Within the coordinates of the ICES Rectangle as shown on the chart.

Sample Points:

Location Code	Location
OS-25-E2	West of France, VIIH

Single sample to be taken within the coordinates of the rectangle.

Location: **West of France**
ICES Rectangle (25-E3)



Production area is defined as area inside boundary line:

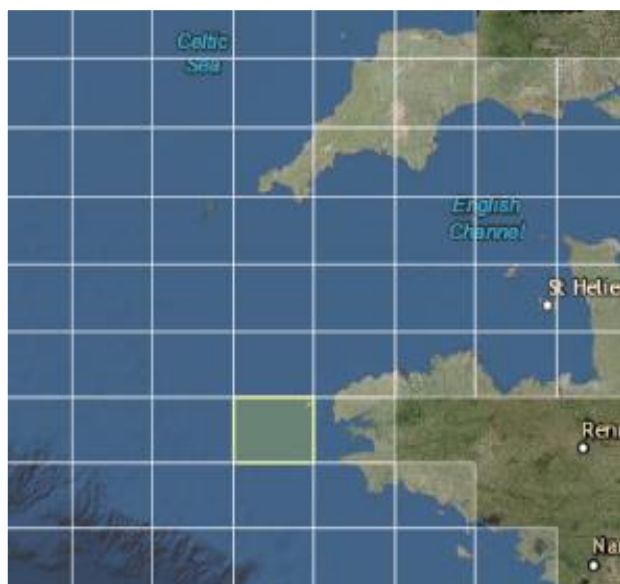
Within the coordinates of the ICES Rectangle as shown on the chart.

Sample Points:

Location Code	Location
OS-25-E3	West of France, VIIH

Single sample to be taken within the coordinates of the rectangle.

Location: **West of France**
ICES Rectangle (25-E4)



Production area is defined as area inside boundary line:

Within the coordinates of the ICES Rectangle as shown on the chart, up to and including the mean high water mark where rectangle intersects coastline.

Sample Points:

Location Code	Location
OS-25-E4	West of France, VIIH

Single sample to be taken within the coordinates of the rectangle.

Location: **West of France**
ICES Rectangle (25-E5)



Production area is defined as area inside boundary line:

Within the coordinates of the ICES Rectangle as shown on the chart, up to and including the mean high water mark where rectangle intersects coastline.

Sample Points:

Location Code	Location
OS-25-E5	West of France, VIIIE

Single sample to be taken within the coordinates of the rectangle.

Location: **West of France**
ICES Rectangle (24-E0)



Production area is defined as area inside boundary line:

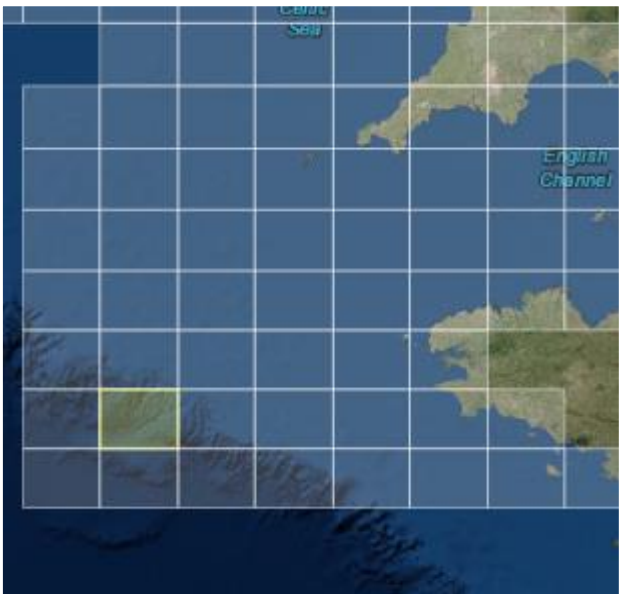
Within the coordinates of the ICES Rectangle as shown on the chart.

Sample Points:

Location Code	Location
OS-24-E0	West of France, VIID

Single sample to be taken within the coordinates of the rectangle.

Location: **West of France**
ICES Rectangle (24-E1)



Production area is defined as area inside boundary line:

Single sample to be taken within the coordinates of the rectangle.

Sample Points:

Location Code	Location
OS-24-E1	West of France, VIID

Single sample to be taken within the coordinates of the rectangle.

Location: **West of France**
ICES Rectangle (24-E2)



Production area is defined as area inside boundary line:

Within the coordinates of the ICES Rectangle as shown on the chart.

Sample Points:

Location Code	Location
OS-24-E2	West of France, VIIIA

Single sample to be taken within the coordinates of the rectangle.

Location: **West of France**
ICES Rectangle (24-E3)



Production area is defined as area inside boundary line:

Single sample to be taken within the coordinates of the rectangle.

Sample Points:

Location Code	Location
OS-24-E3	West of France, VIIA

Single sample to be taken within the coordinates of the rectangle.

Location: **West of France**
ICES Rectangle (24-E4)



Production area is defined as area inside boundary line:

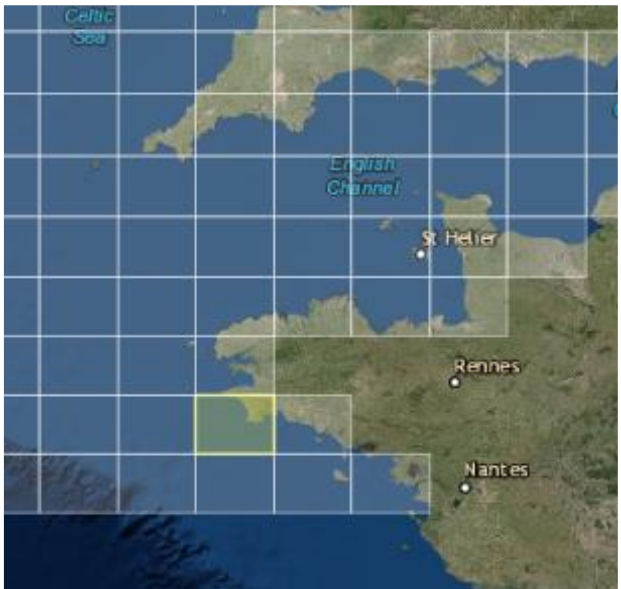
Within the coordinates of the ICES Rectangle as shown on the chart.

Sample Points:

Location Code	Location
OS-24-E4	West of France, VIIIA

Single sample to be taken within the coordinates of the rectangle.

Location: **West of France**
ICES Rectangle (24-E5)



Production area is defined as area inside boundary line:

Within the coordinates of the ICES Rectangle as shown on the chart, up to and including the mean high water mark where rectangle intersects coastline.

Sample Points:

Location Code	Location
OS-24-E5	West of France, VIIA

Single sample to be taken within the coordinates of the rectangle.

Location: **West of France**
ICES Rectangle (24-E6)



Production area is defined as area inside boundary line:

Within the coordinates of the ICES Rectangle as shown on the chart, up to and including the mean high water mark where rectangle intersects coastline.

Sample Points:

Location Code	Location
OS-24-E6	West of France, VIIIA

Single sample to be taken within the coordinates of the rectangle.

Location: **West of France**
ICES Rectangle (23-E0)



Production area is defined as area inside boundary line:

Within the coordinates of the ICES Rectangle as shown on the chart.

Sample Points:

Location Code	Location
OS-23-E0	West of France, VIID

Single sample to be taken within the coordinates of the rectangle.

Location: **West of France**
ICES Rectangle (23-E1)



Production area is defined as area inside boundary line:

Single sample to be taken within the coordinates of the rectangle.

Sample Points:

Location Code	Location
OS-23-E1	West of France, VIID

Single sample to be taken within the coordinates of the rectangle.

Location: **West of France**
ICES Rectangle (23-E2)



Production area is defined as area inside boundary line:

Within the coordinates of the ICES Rectangle as shown on the chart.

Sample Points:

Location Code	Location
OS-23-E2	West of France, VIIIA

Single sample to be taken within the coordinates of the rectangle.

Location: **West of France**
ICES Rectangle (23-E3)



Production area is defined as area inside boundary line:

Single sample to be taken within the coordinates of the rectangle.

Sample Points:

Location Code	Location
OS-23-E3	West of France, VIIA

Single sample to be taken within the coordinates of the rectangle.

Location: **West of France**
ICES Rectangle (23-E4)



Production area is defined as area inside boundary line:

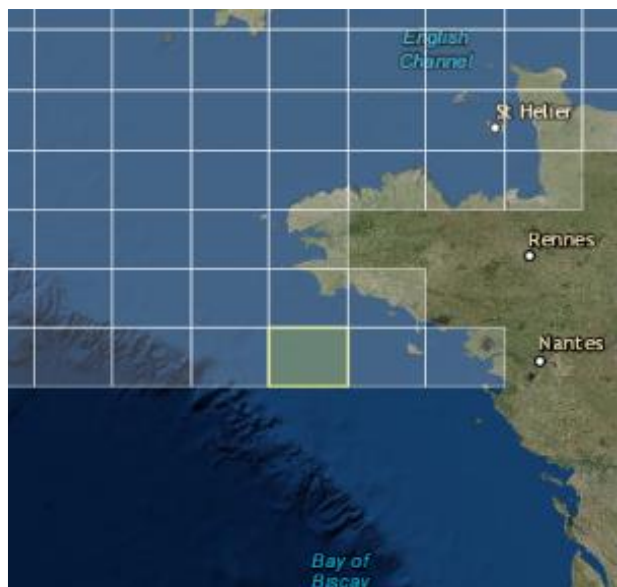
Within the coordinates of the ICES Rectangle as shown on the chart.

Sample Points:

Location Code	Location
OS-23-E4	West of France, VIIIA

Single sample to be taken within the coordinates of the rectangle.

Location: **West of France**
ICES Rectangle (23-E5)



Production area is defined as area inside boundary line:

Single sample to be taken within the coordinates of the rectangle.

Sample Points:

Location Code	Location
OS-23-E5	West of France, VIIA

Single sample to be taken within the coordinates of the rectangle.

Location: **West of France**
ICES Rectangle (23-E6)



Production area is defined as area inside boundary line:

Within the coordinates of the ICES Rectangle as shown on the chart, up to and including the mean high water mark where rectangle intersects coastline.

Sample Points:

Location Code	Location
OS-23-E6	West of France, VIIIA

Single sample to be taken within the coordinates of the rectangle.

Location: **West of France**
ICES Rectangle (23-E7)



Production area is defined as area inside boundary line:

Within the coordinates of the ICES Rectangle as shown on the chart, up to and including the mean high water mark where rectangle intersects coastline.

Sample Points:

Location Code	Location
OS-23-E7	West of France, VIIA

Single sample to be taken within the coordinates of the rectangle.