

# Nephrops Burrow Identification



Rialtas na hÉireann  
Government of Ireland



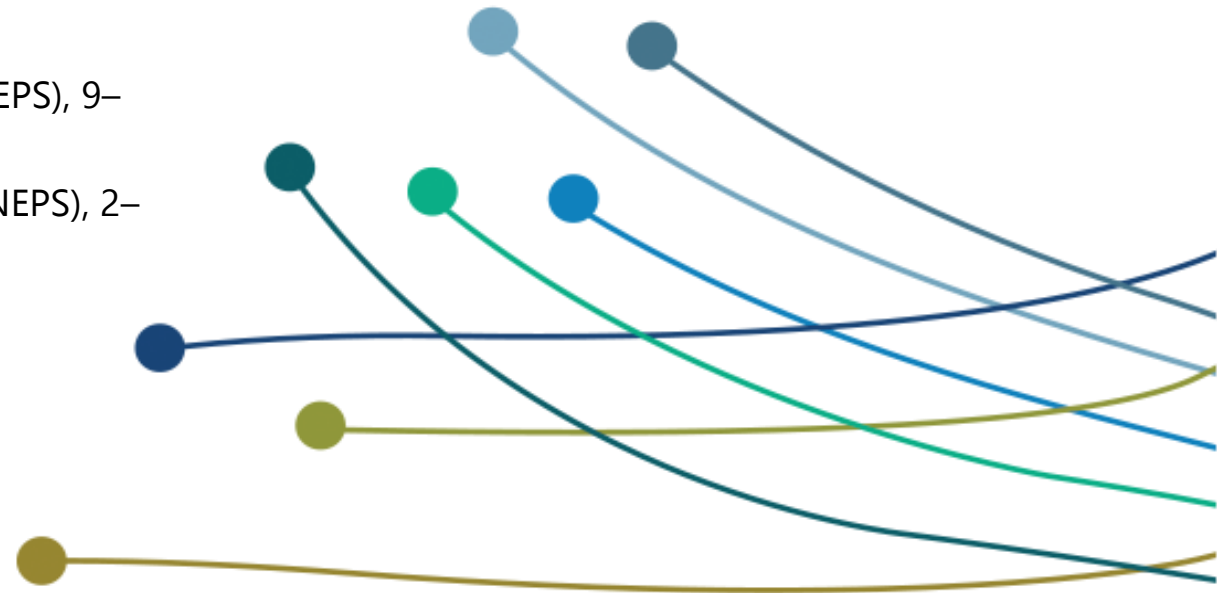
Có-mhaoinithe ag an  
Aontas Eorpach  
Co-funded by the  
European Union



Foras na Mara  
Marine Institute

## Background documents:

- ICES. 2007. Report of the Workshop on the use of UWTV surveys for determining abundance in Nephrops stocks throughout European waters (WKNEPHTV). 17–21 April 2007, Heraklion, Crete, Greece. ICES CM: 2007/ACFM: 14 198 pp.
- ICES. 2008. Report of the Workshop and training course on Nephrops burrow identification (WKNEPHBID), 25–29 February 2008, Belfast, Northern Ireland, UK. ICES CM 2008/LRC:03. 44 pp.
- ICES. 2016. Report of the Workshop on Nephrops burrow counting (WKNEPS), 9–11 November 2016. Reykjavík, Iceland. ICES CM 2016/SSGIEOM:34. 62 pp.
- ICES. 2018a. Report of the Workshop on Nephrops burrow counting (WKNEPS), 2–5 October 2018, Aberdeen, UK. ICES CM 2018/ EOSG:25.47 pp.



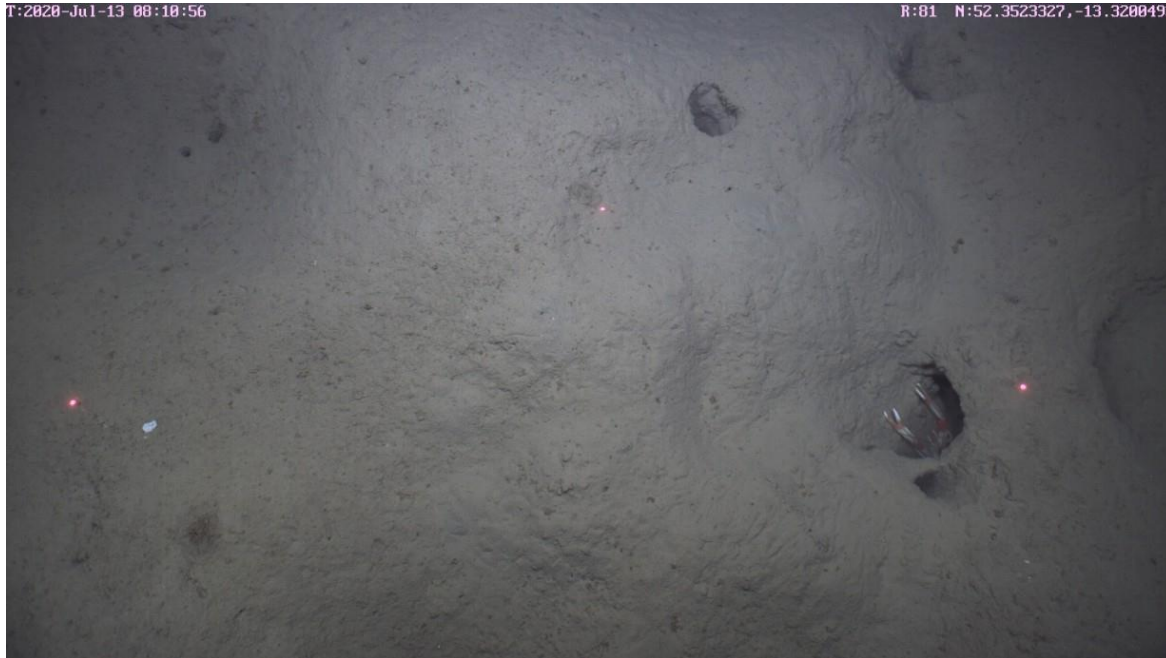
# Main Signature Features of a Burrow System



In summary the main characteristics defining an active *Nephrops* burrow system are :

- **a crescent shaped entrance**
- **a delta of excavated material**
- **where visible the angle of descent is shallow**
- **the apexes of the entrances facing each other in a simple U-shaped system**
- **or converging on one central point in a more developed system; several entrances forming a T-shape in some systems**

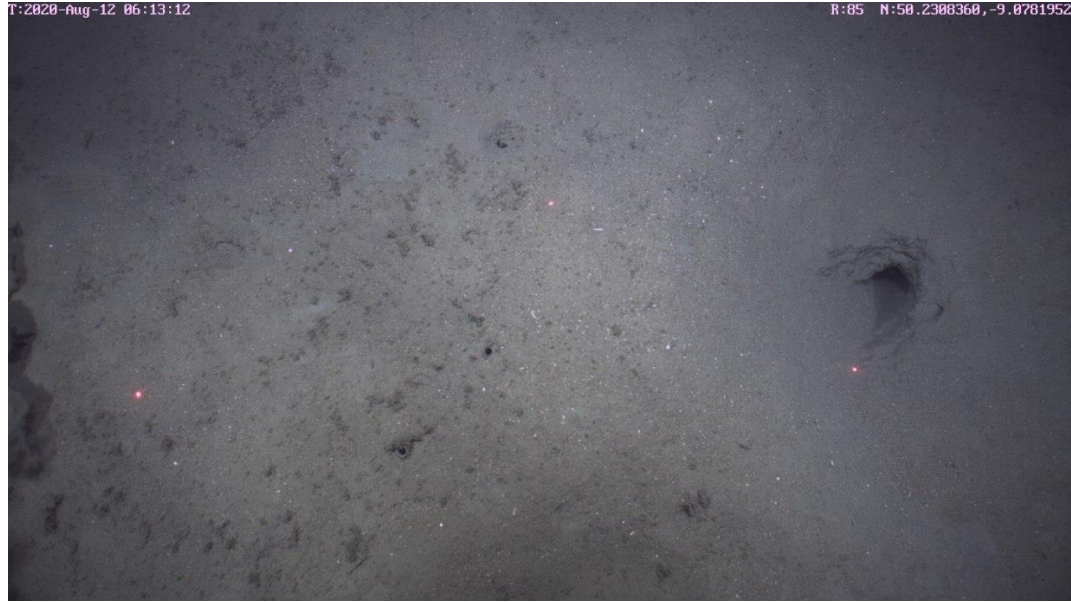
## crescent shaped entrance



## Delta of excavated sediment



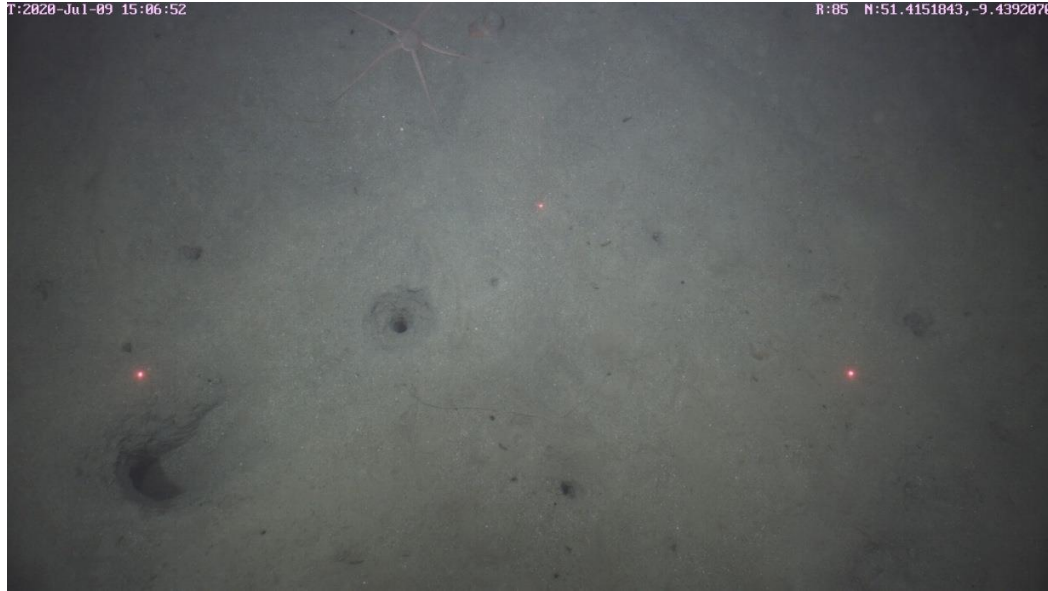
## Shallow angle of descent



## Apexes facing each other



# Single burrow system



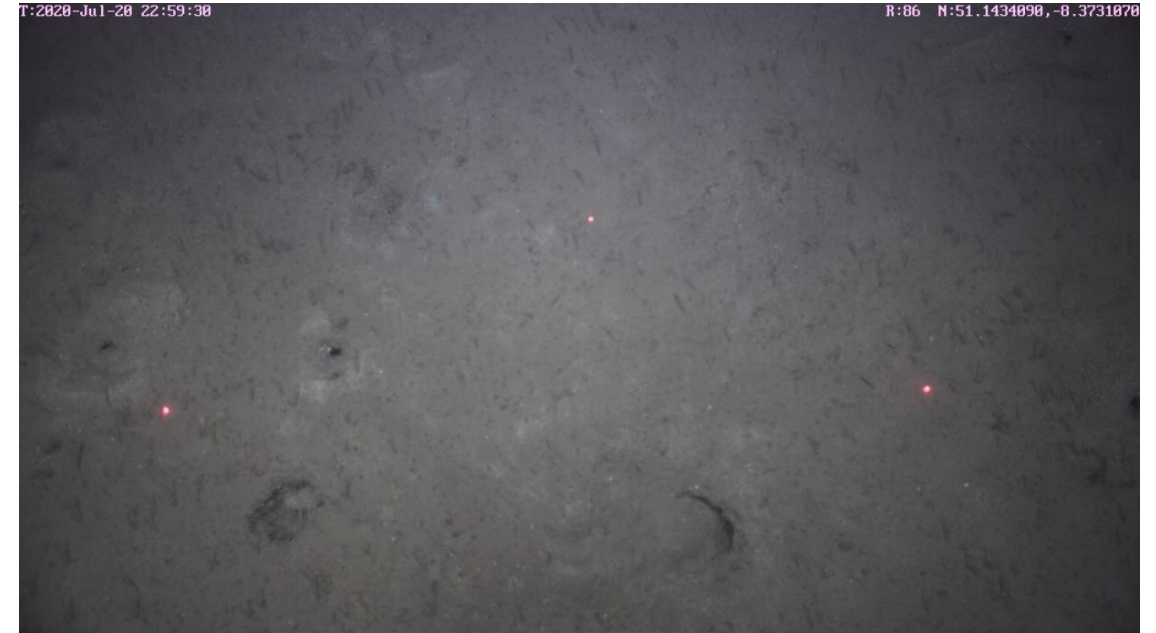
# Linear Burrow System



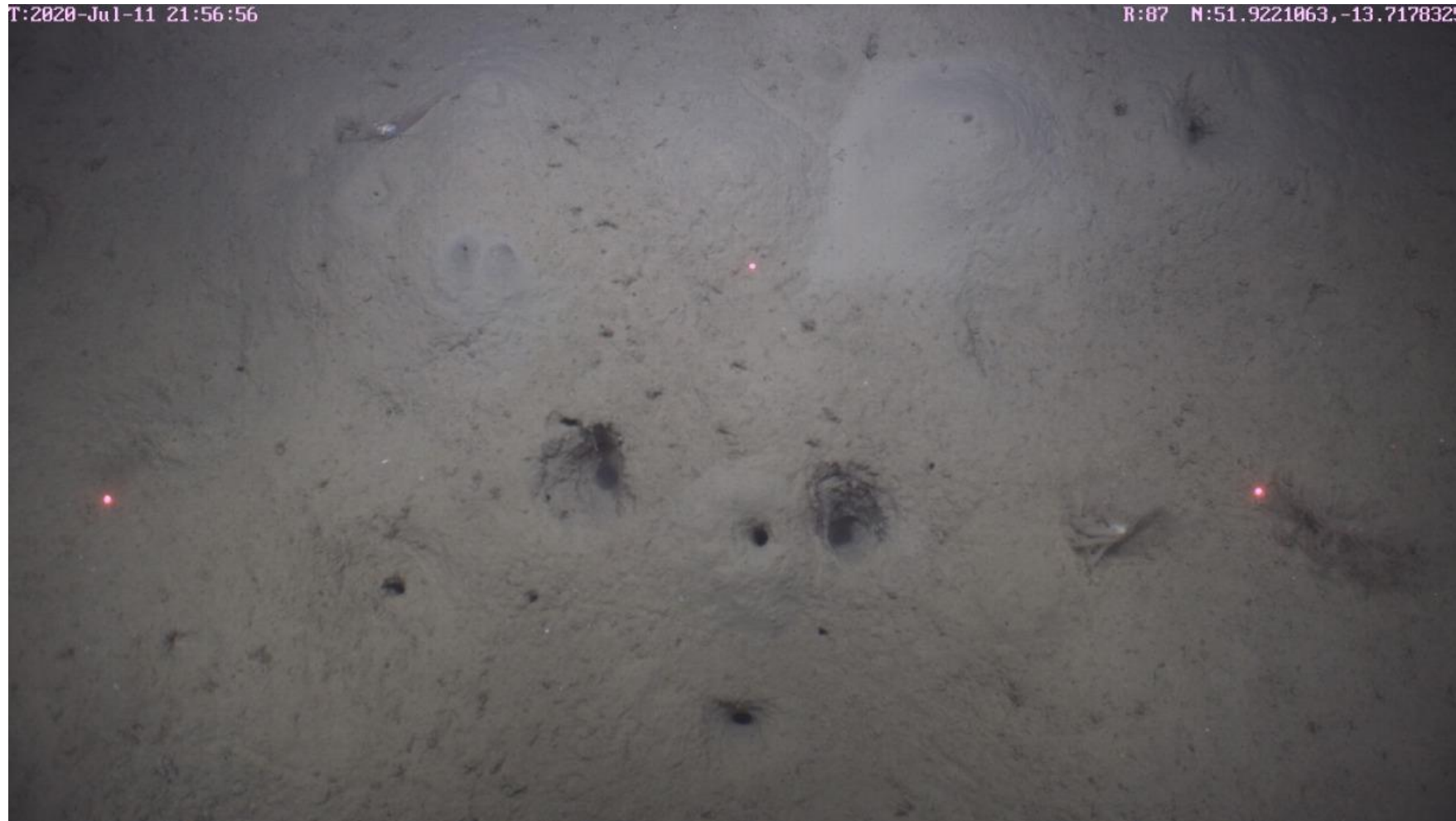
# T- shaped or further elaboration



# Discount flat c-shaped burrows



# Discount circular burrows with vertical drops



# Crab Burrows



## Species presence in a burrow entrance

Occasionally the presence of species in burrow entrances may cause some confusion.

For example the presence of a squat lobster in a burrow entrance with signature *Nephrops* burrow characteristics should not result in discounting this as a *Nephrops* burrow system.

The presence of *Nephrops* in a burrow entrance as a sole feature for identification also requires due caution as the animal may not be the architect. Scared into burrow by sledge?



## Recently trawled ground

Areas that have recently been trawled also disfigure burrow entrances.

Surface features flattened and burrows may be reforming and not exhibit signature features.

Deep trench where the otter board/trawl door has ploughed through the sediment.

Parallel grooves where the trawl's bobbins (or disks) on the groundrope have swept the area.

