

UWTV Survey Ireland

Towed camera imagery

HD digital still images

Seapen species examples

Jennifer Doyle
Marine Institute



Rialtas na hÉireann
Government of Ireland



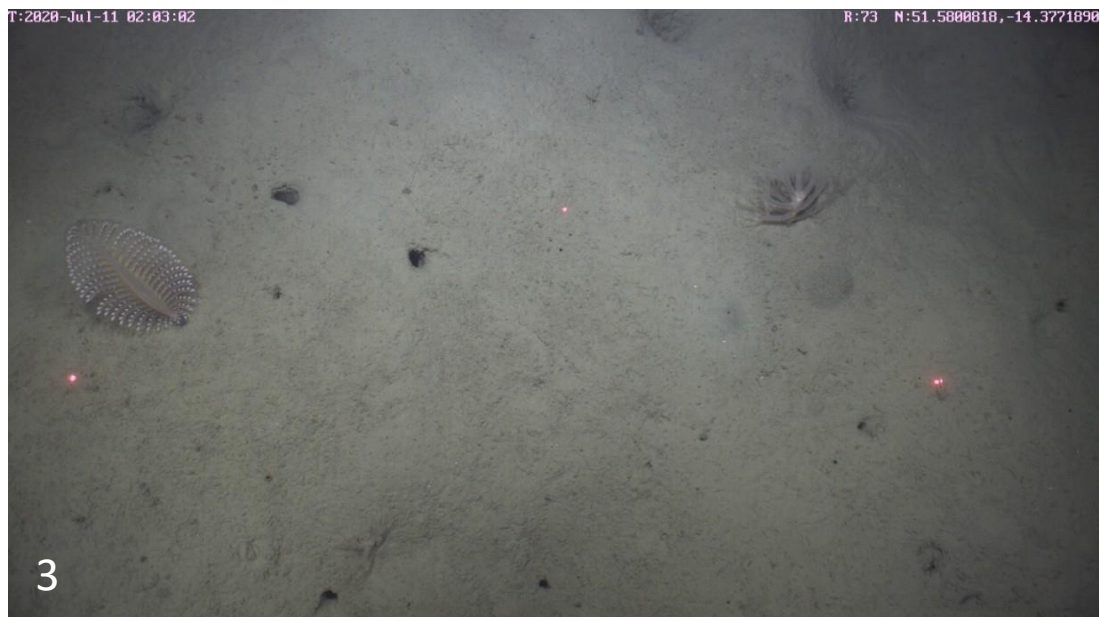
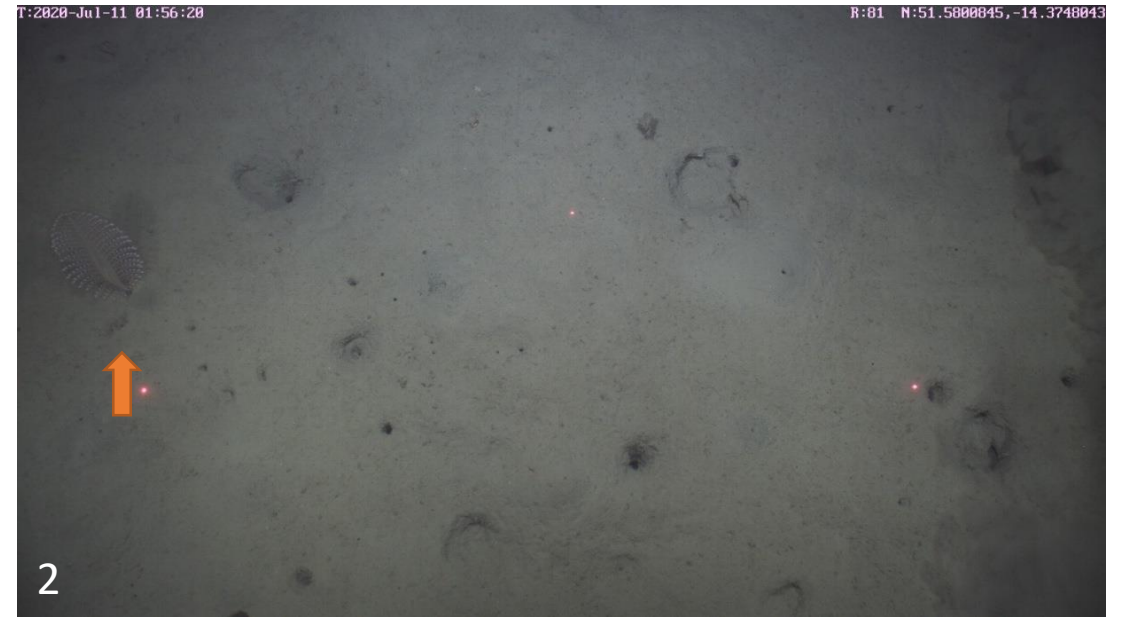
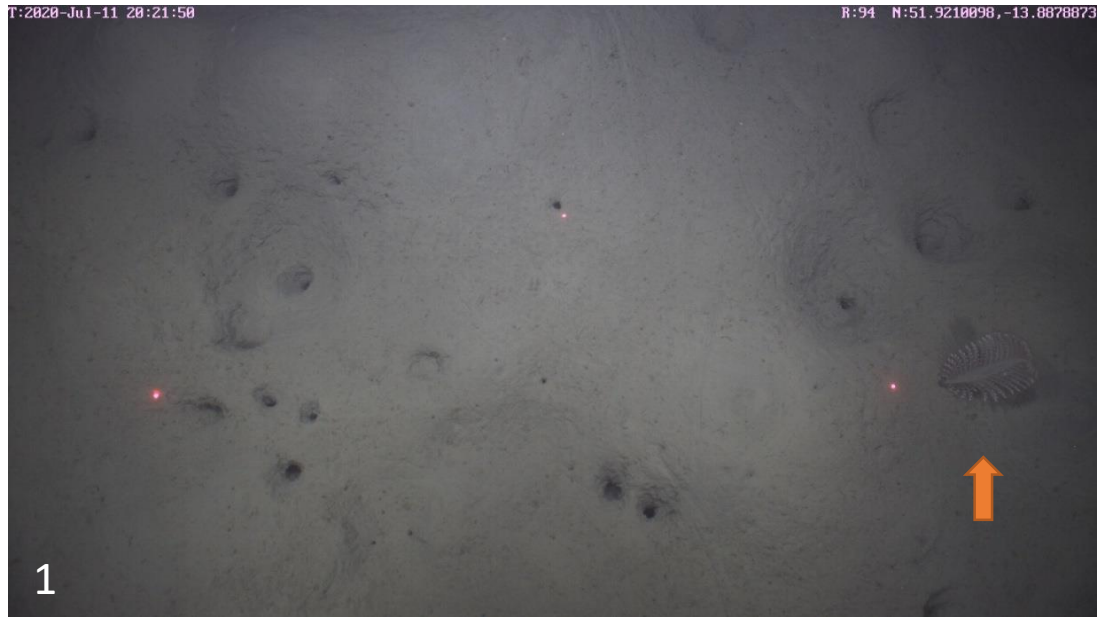
Có-mhaoinithe ag an
Aontas Eorpach
Co-funded by the
European Union



Foras na Mara
Marine Institute

Pennatula phosphorea

- Easy to distinguish where the colonies can be yellowish to pale pink with reddish shades with a leaf-like appearance.
- Colonies are retractile and may withdraw within the sediment or be more or less swollen above the surface.



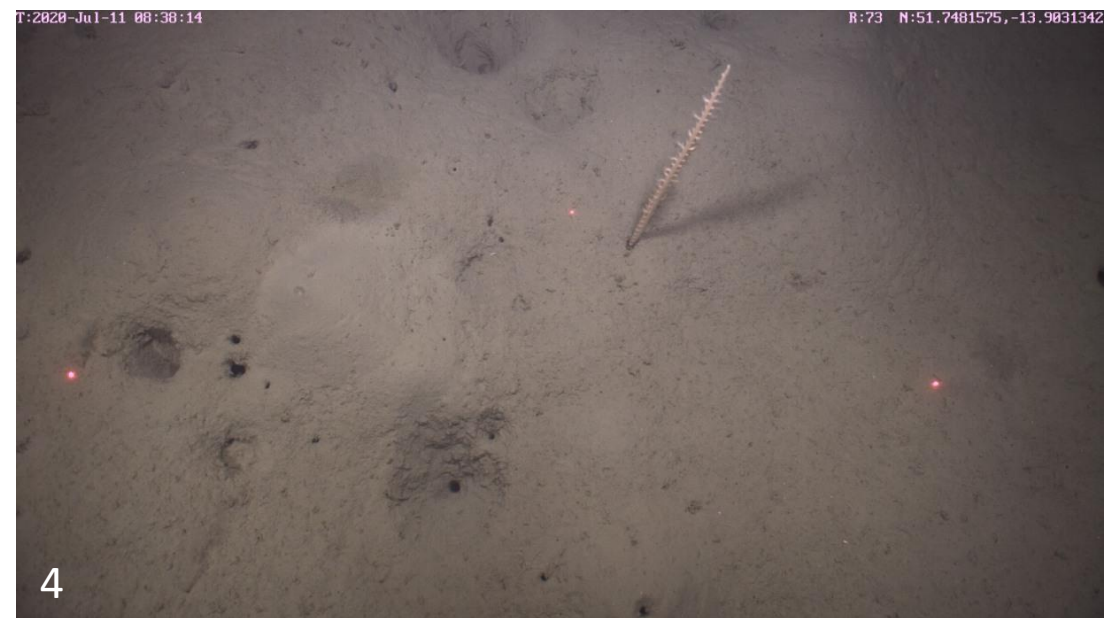
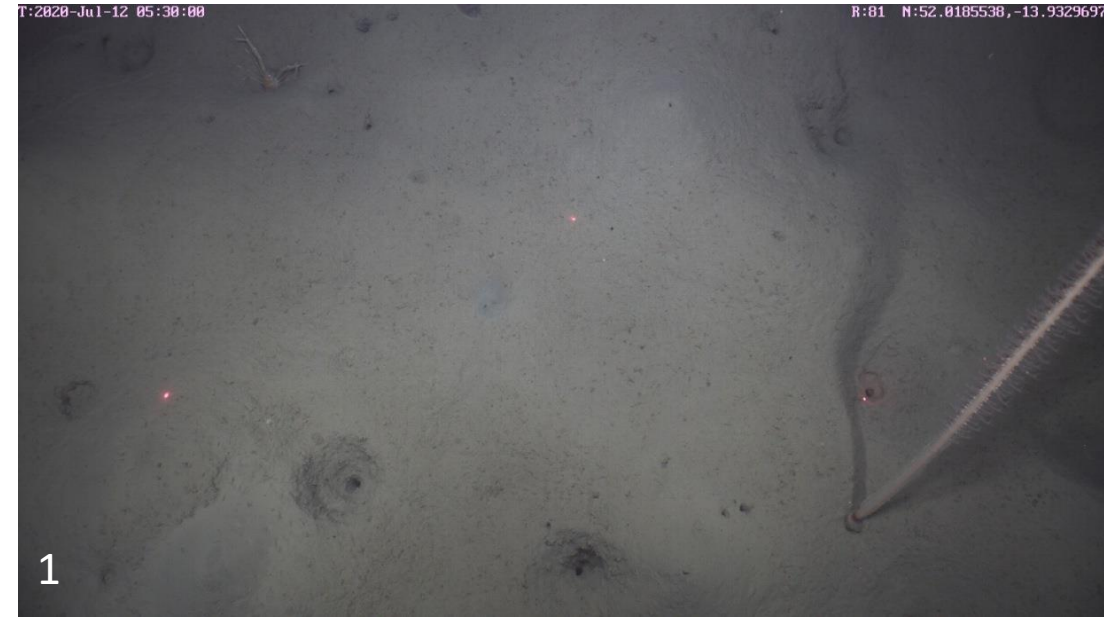
Virgularia mirabilis

- Tall slender sea-pen with delicate tiny branches giving it appearance of a quill.
- Observed singularly but also in aggregations.
- When disturbed, colonies may quickly and entirely withdraw in the substratum.



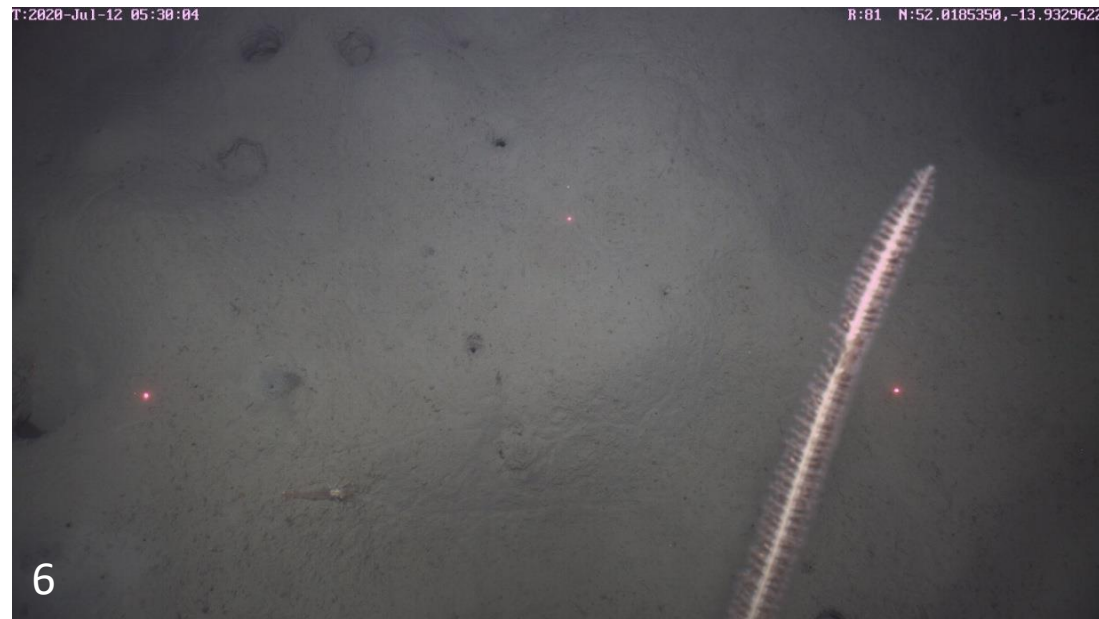
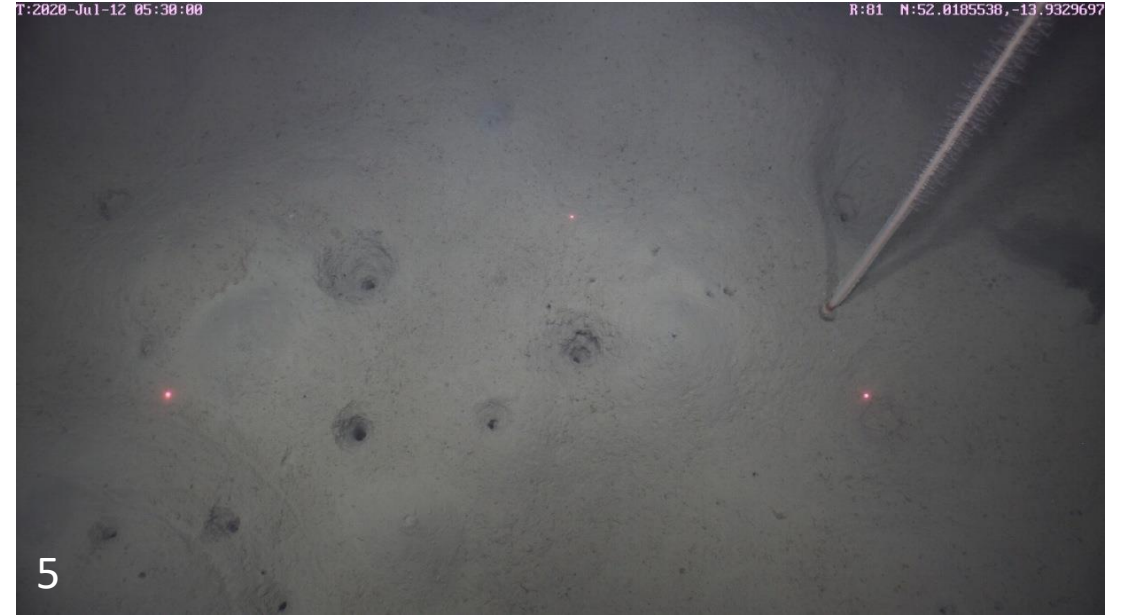
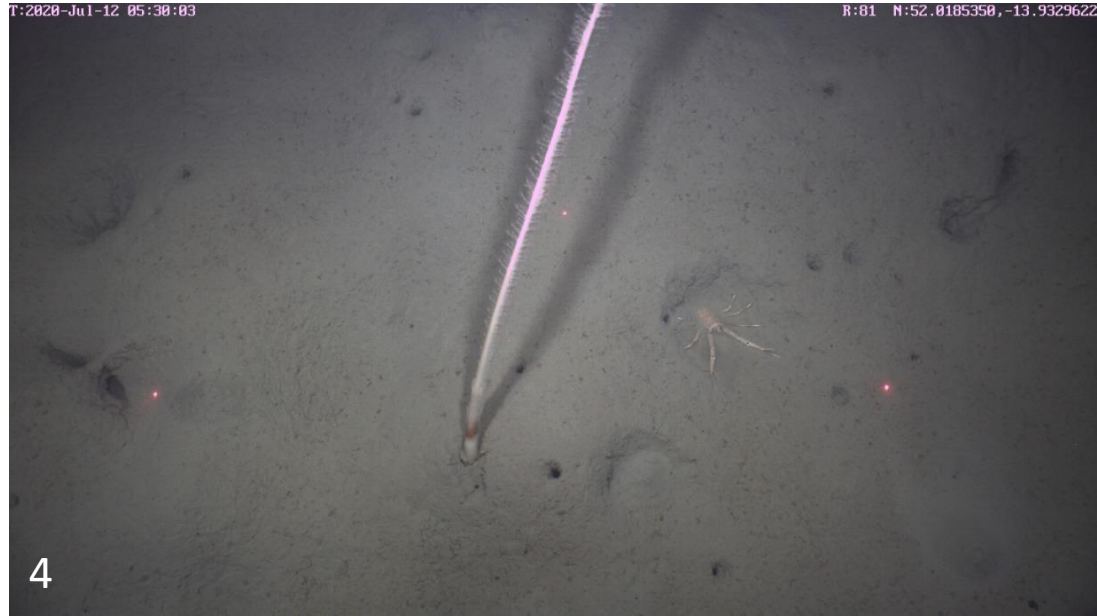
Funiculina quadrangularis

- The polyps are irregularly arranged along the axis or tend to form oblique rows. They are white or pale pink in colour.
- Lower quarter of stem forms a smooth peduncle, upper one third is curved
- Not retractable due to brittle axial rod



Funiculina quadrangularis

- Note image 4 , 5 and 6 is of the the same specimen.
- Image number 6 is four seconds later than image number 5 showing tip of *F. quadrangularis* as camera passes over
- Time and date stamp on upper left of image



Kophobelemnon stelliferum

- Only observed in deepwater stations (> 230 metres) and easy to distinguish sessiflorate with a creamish colour.
- Observed singularly but also in aggregations.

