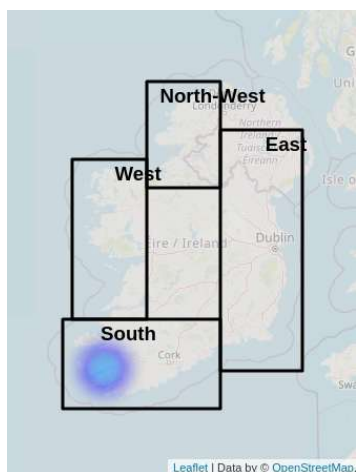
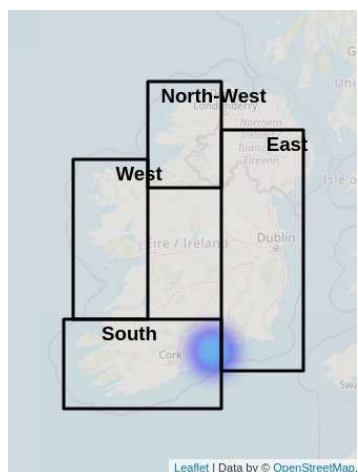


## Diarrhetic Shellfish Toxins



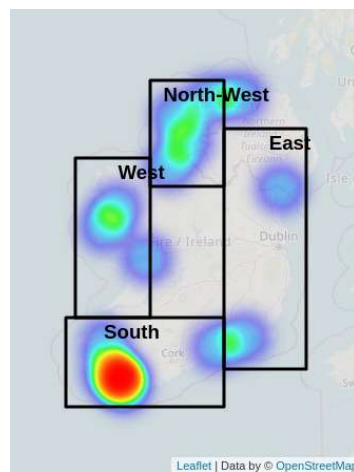
Toxic Sites	0
Analysed Sites	41

## Azspiracid Shellfish Toxins



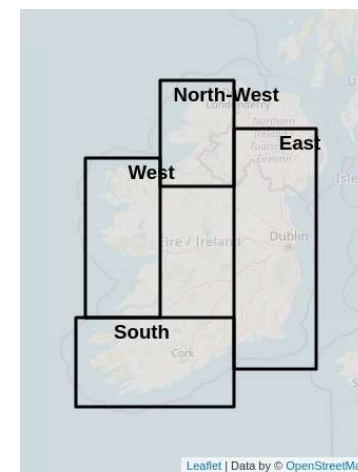
Toxic Sites	0
Analysed Sites	41

## Amnesic Shellfish Toxins



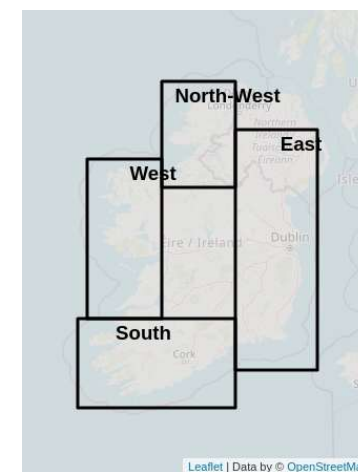
Toxic Sites	0
Analysed Sites	41

## Paralytic Shellfish Toxins



Toxic Sites	0
Analysed Sites	5

## Yessotoxins



Toxic Sites	0
Analysed Sites	41

**AST:** (Amnesic shellfish toxin) Continued strong growth rate in SW, consistent with seasonal historic trend. Pattern would indicate high caution advised. Low to moderate caution in all other Western Coasts areas. Highest SW and WSW, now indicate increased presence and spread of potential cells, and increasing to high throughout all coastline. **Caution advised.**

**AZA:** (Azaspiracid toxin) Low risk on all shorelines, but there is a constant low fluctuating phytoplankton presence, caution advised as we are in a historical risk period also. This species has caused sudden acute issues in the past, rarely presents any reliable trends.

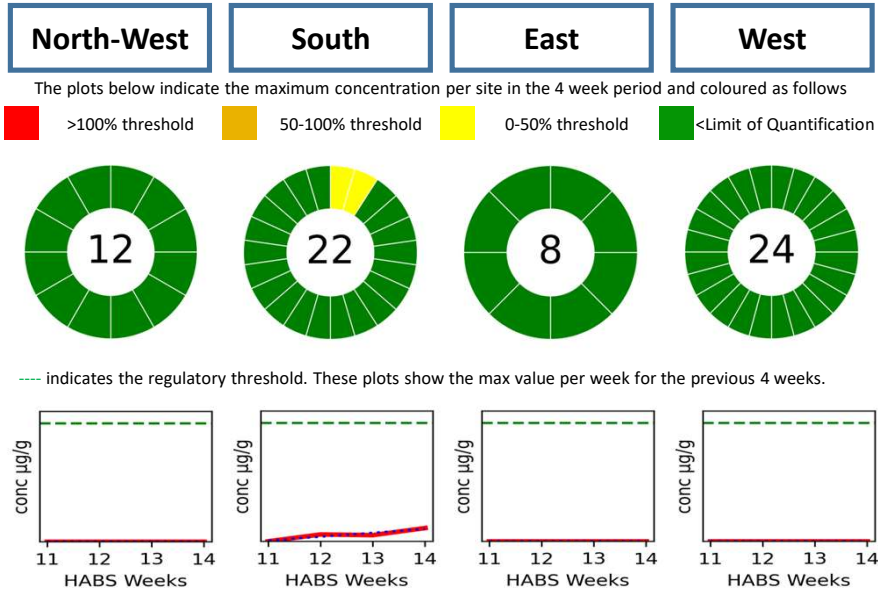
**DST:** (Dinophysis shellfish toxin) Low risk generally. Environmental conditions re: transportation, temperatures and light not currently indicating suitability for sudden increases.

**PST:** (Paralytic shellfish toxins) Low risk as environmental conditions not expected to be suitable for bloom establishment.

# Diarhetic Shellfish Toxins & *Dinophysis* species

Regional 4-Week Trends 09/03/25 - 05/04/25

In this 4 week period there were 152 Samples tested for DST. These samples were collected at 66 Sites around the country. Resulting in 0 Site(s) with values above the regulatory limit of 0.16 µg/g



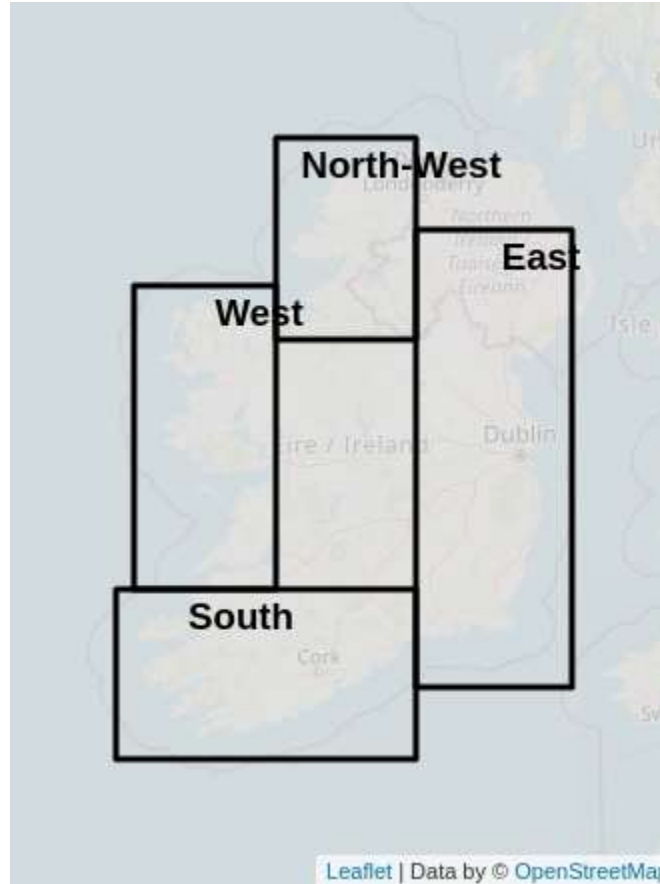
Risk: **Low**      **Low**      **Low**      **Low**

Trend:               

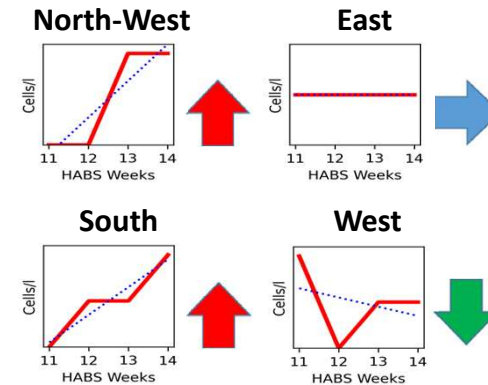
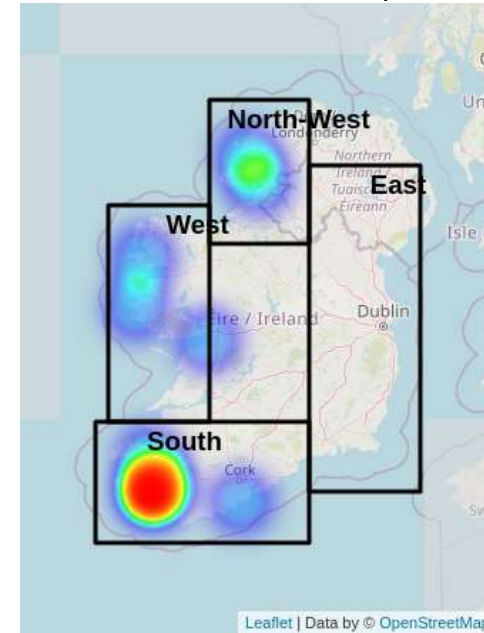
Risk:

Low levels of cells present and unlikely to increase dramatically at this time.

## Diarhetic Shellfish Toxins National 4-Week Heatmap



## Phytoplankton *Dinophysis* spp. 4 Week Heatmap

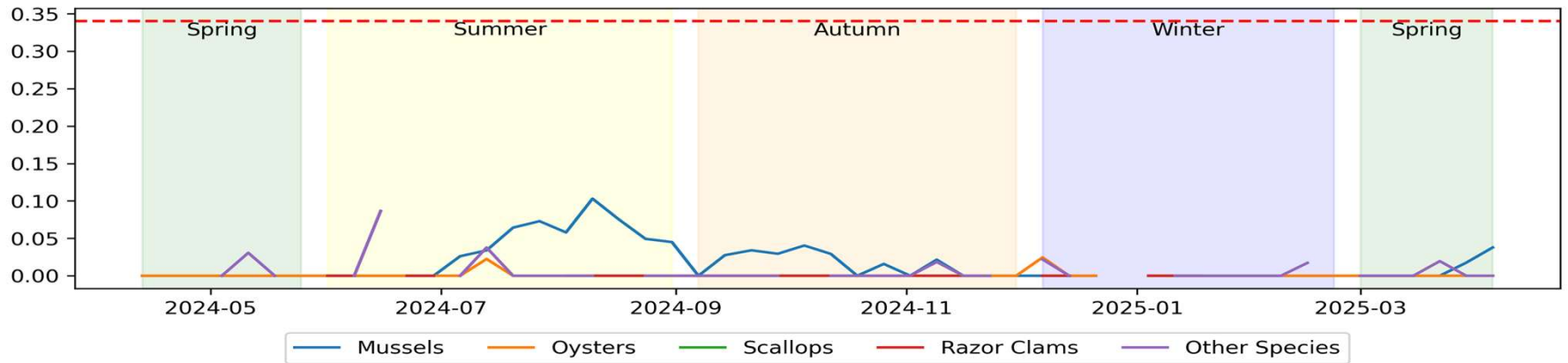


# Diarhetic Shellfish Toxins & *Dinophysis* species

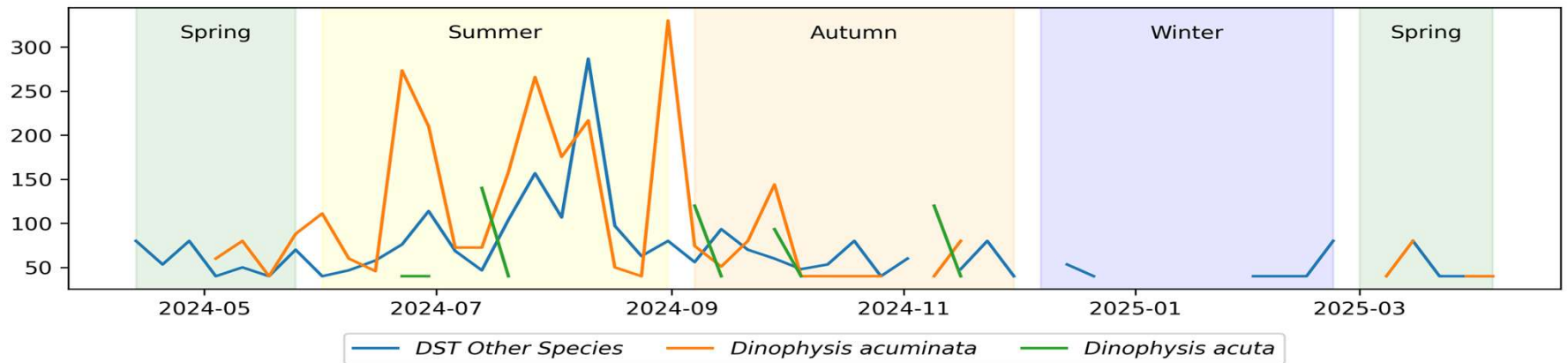
National Yearly Trend 06/04/24 - 05/04/25



Trend of Maximum Toxin concentrations in Shellfish Species (measured in  $\mu\text{g/g}$ )



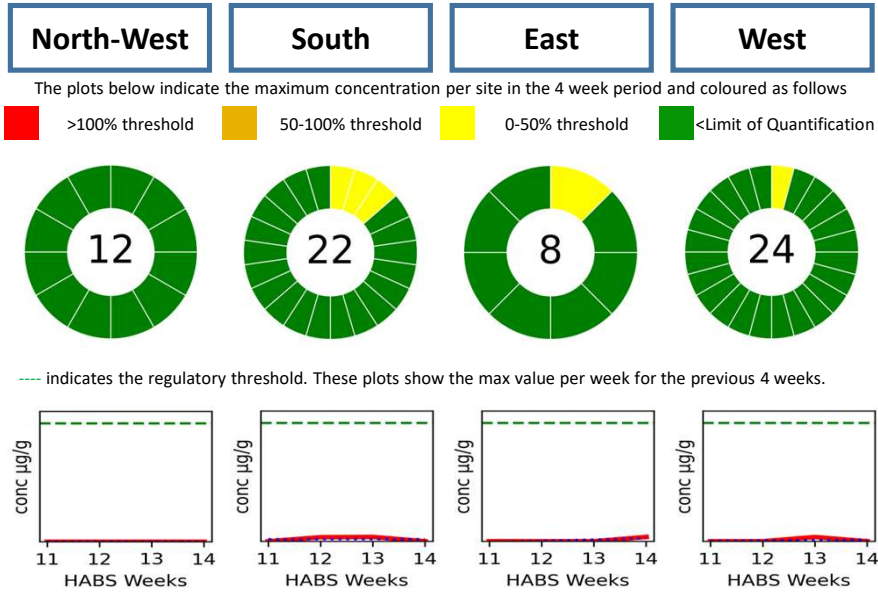
Trend of Average Counts of Toxin Causing PhytoPlankton Species Per Week (measured in Cells per Litre)



# Azspiracid Shellfish Toxins & *Azadinium* species

Regional 4-Week Trends 09/03/25 - 05/04/25

In this 4 week period there were 152 Samples tested for AZT. These samples were collected at 66 Sites around the country. Resulting in 0 Site(s) with values above the regulatory limit of 0.16 µg/g



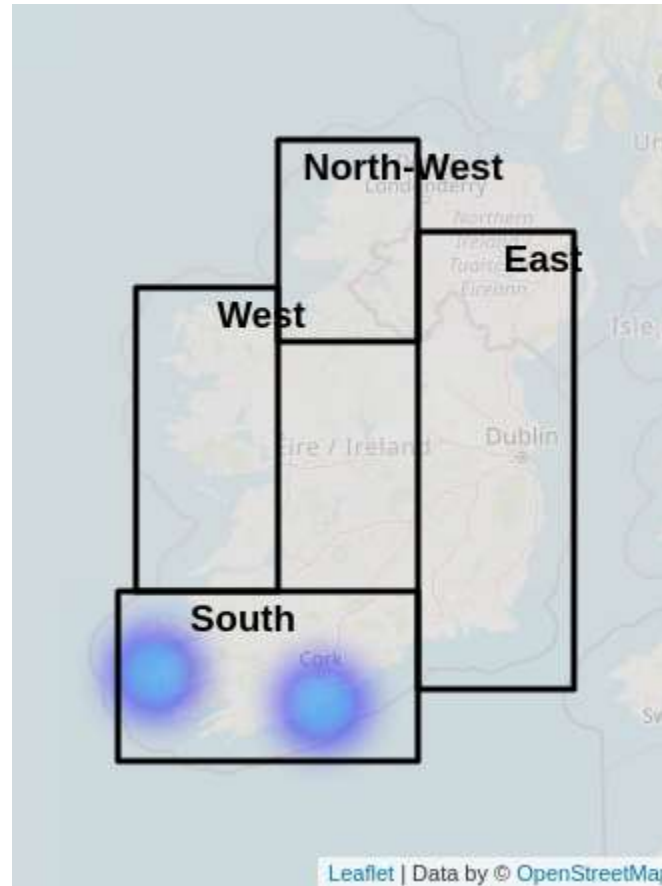
Risk: **Low**      **Low**      **Low**      **Low**

Trend:               

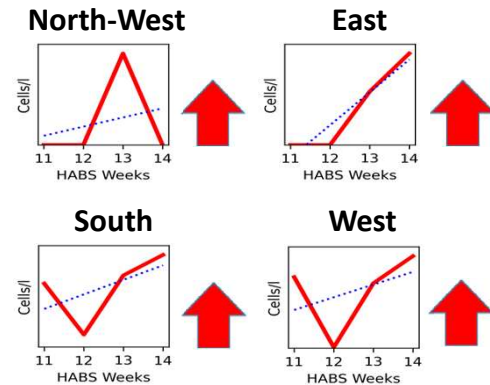
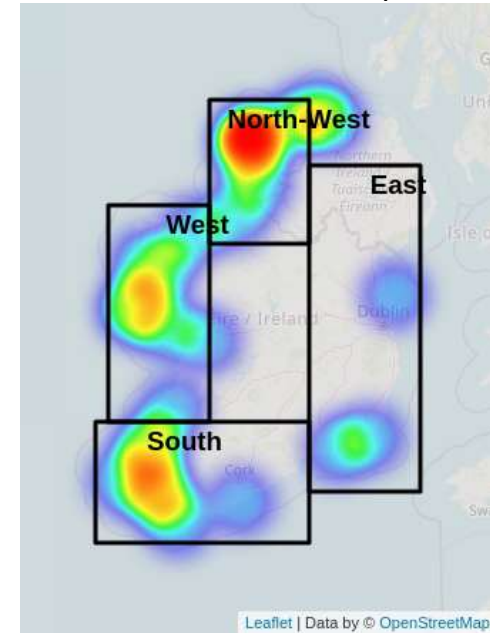
Risk:

Low levels of cells present and quantifiable levels of toxins detected in the Southeast. Unlikely to increase dramatically at this time.

## Azspiracid Shellfish Toxins National 4-Week Heatmap



## Phytoplankton *Azadinium* spp. 4 Week Heatmap

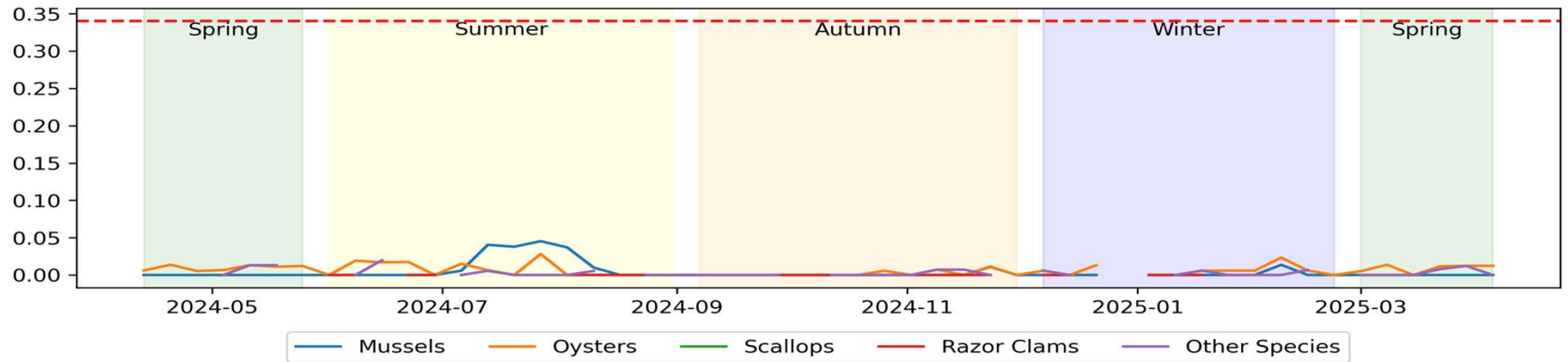


# Azaspiracid Shellfish Toxins & Azadinium species

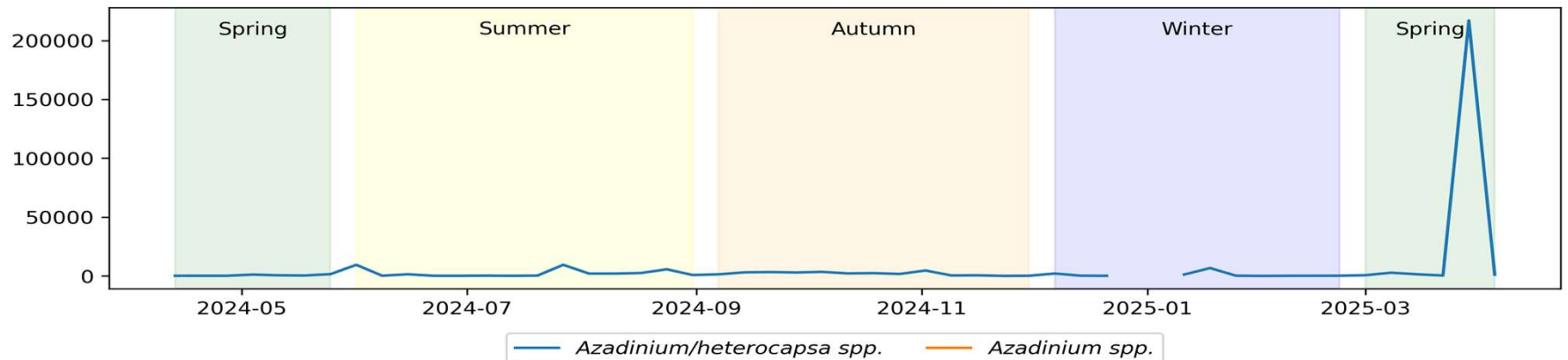
National Yearly Trend 06/04/24 - 05/04/25



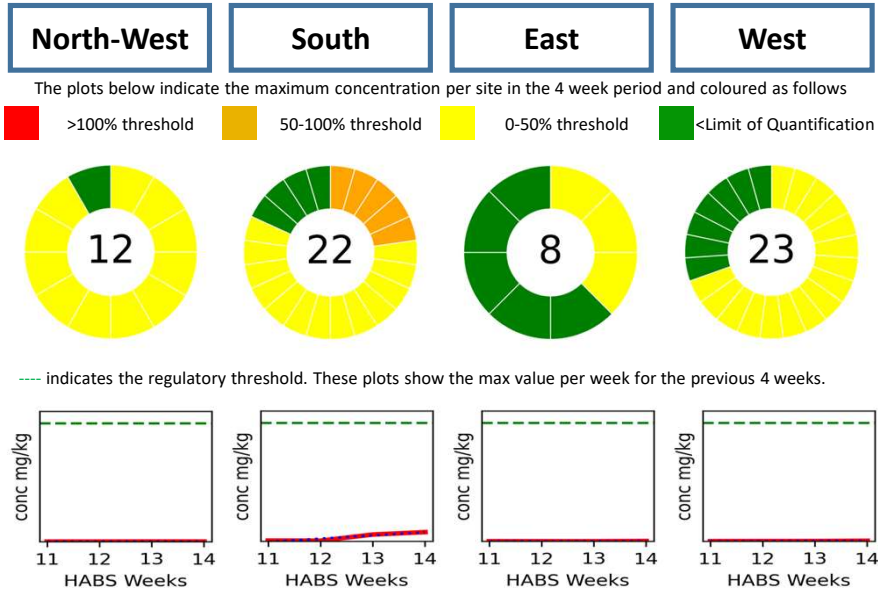
Trend of Maximum Toxin concentrations in Shellfish Species (measured in  $\mu\text{g/g}$ )



Trend of Average Counts of Toxin Causing PhytoPlankton Species Per Week (measured in Cells per Litre)



In this 4 week period there were 141 Samples tested for AST. These samples were collected at 65 Sites around the country. Resulting in 0 Site(s) with values above the regulatory limit of 20.0 mg/kg

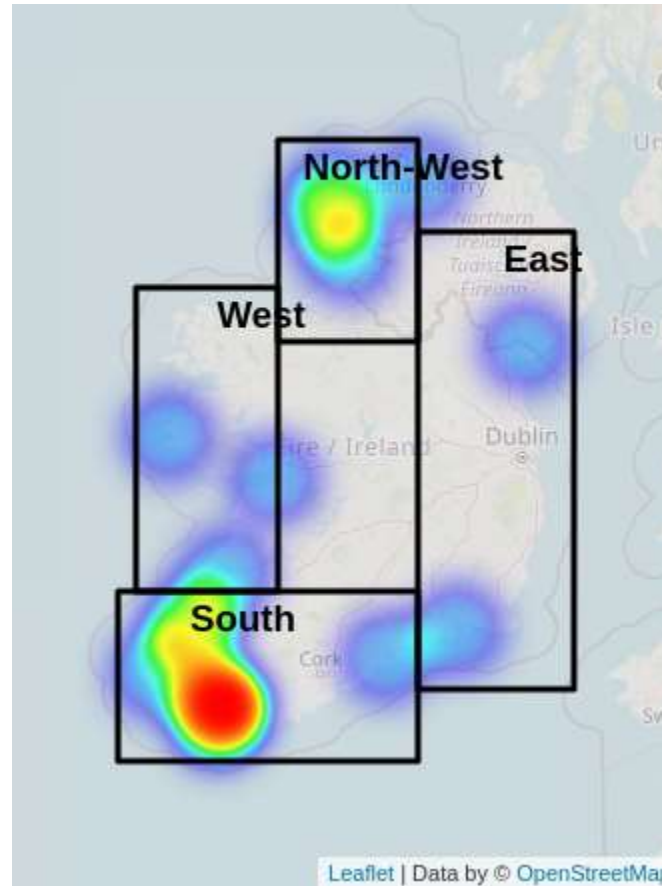


Risk: **Low**      **Low**      **Low**      **Low**

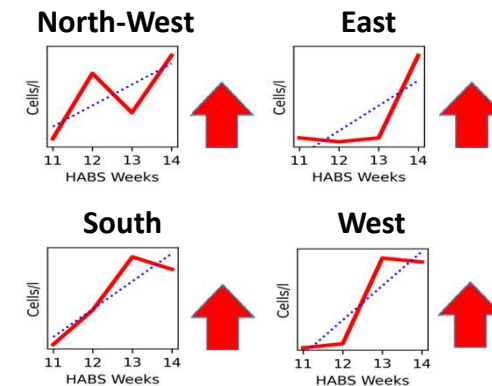
Trend:               

**High Risk:** *Pseudo-nitzschia* spp. counts indicate increased presence and spread of potential cells, particularly on Southwestern coasts. Toxins at levels approaching Regulatory Levels at present in prone areas. Affected sites should remain cautious of changing levels. Individual species within the complex grouping can differ in toxin levels present. Caution still advised.

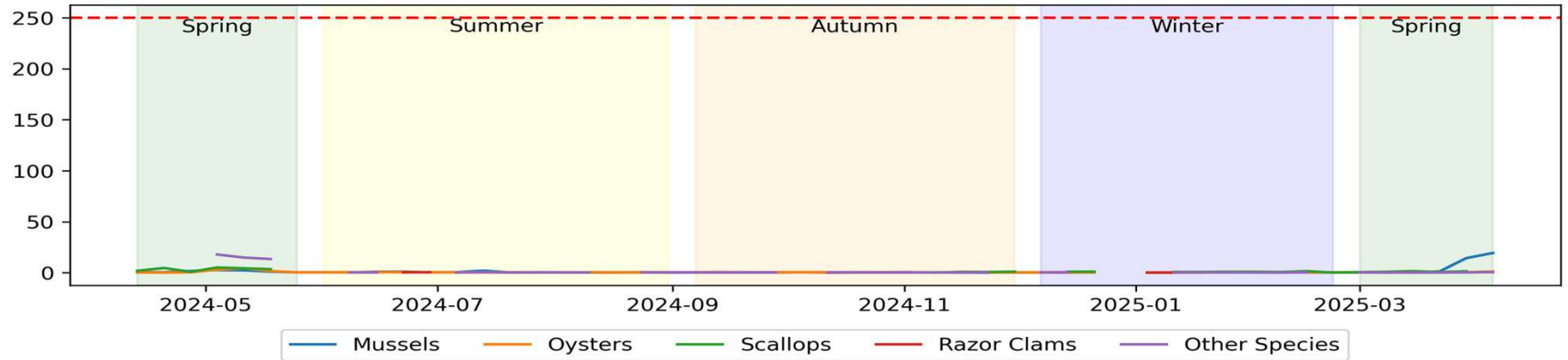
## Amnesic Shellfish Toxins National 4-Week Heatmap



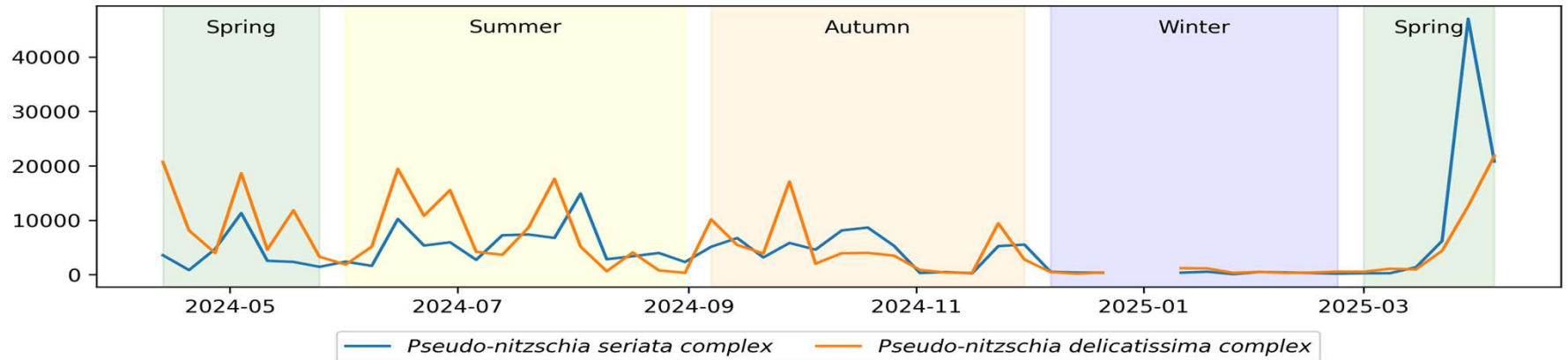
## Phytoplankton *Pseudo-nitzschia* spp. 4 Week Heatmap



Trend of Maximum Toxin concentrations in Shellfish Species (measured in mg/kg)



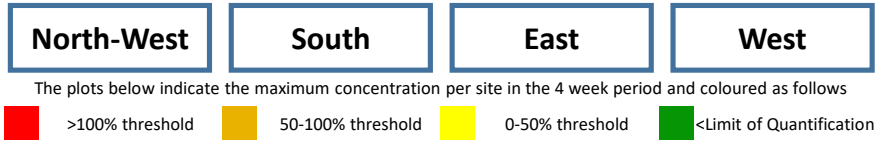
Trend of Average Counts of Toxin Causing Phytoplankton Species Per Week (measured in Cells per Litre)



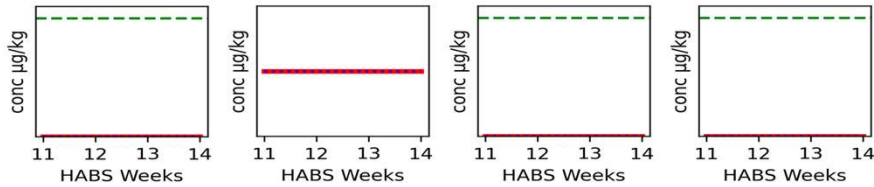
# Paralytic Shellfish Toxins & *Alexandrium* species

Regional 4-Week Trends 09/03/25 - 05/04/25

In this 4 week period there were 14 Samples tested for PST. These samples were collected at 10 Sites around the country. Resulting in 0 Site(s) with values above the regulatory limit of 800.0 µg/kg



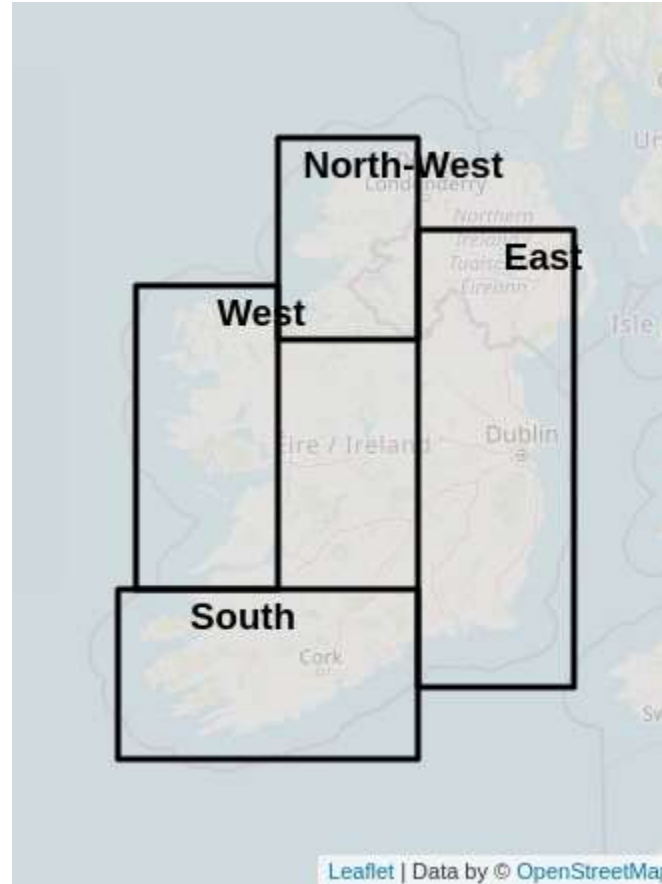
--- indicates the regulatory threshold. These plots show the max value per week for the previous 4 weeks.



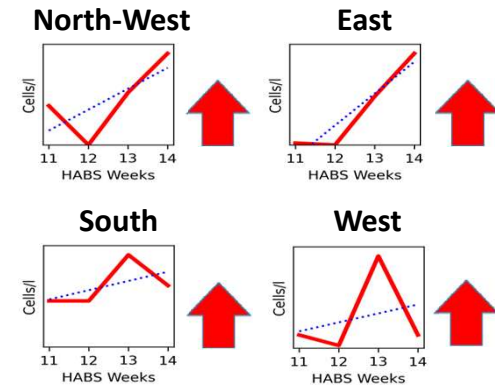
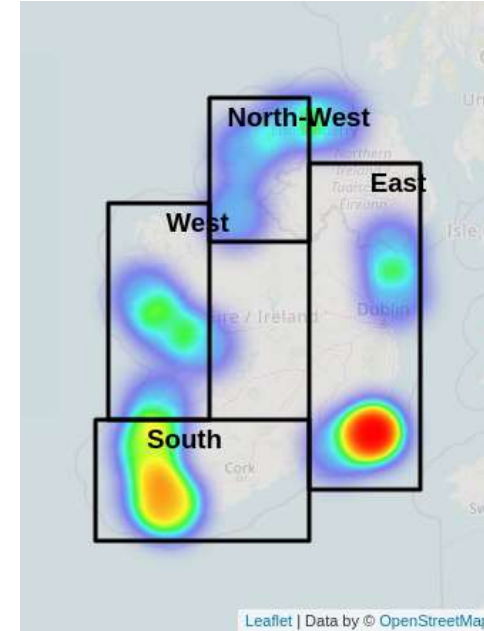
Risk: **Low**      **Medium**      **Low**      **Low**  
 Trend:               

Low Risk.  
 Risk levels low on all coasts.

## Paralytic Shellfish Toxins National 4-Week Heatmap



## Phytoplankton *Alexandrium* spp. 4 Week Heatmap

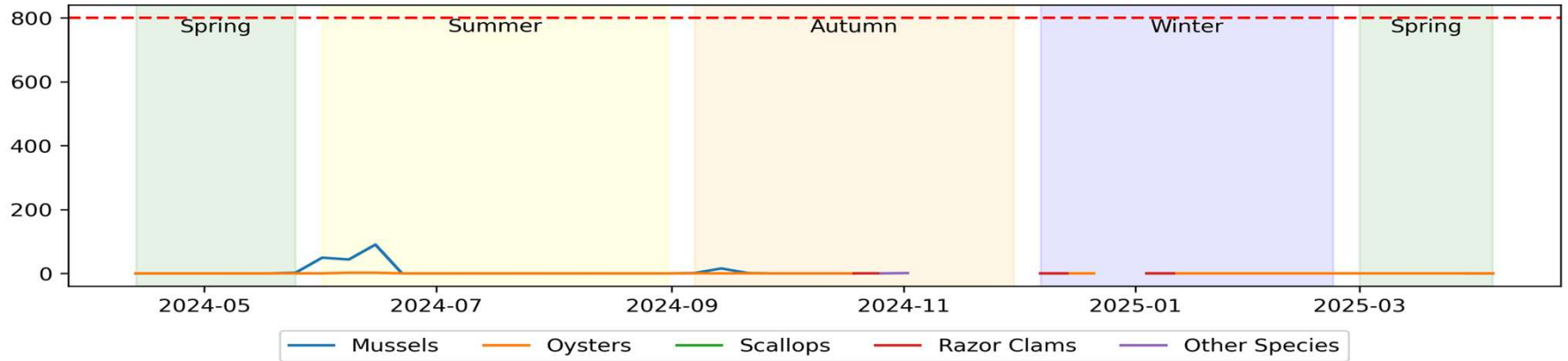


# Paralytic Shellfish Toxins & *Alexandrium* species

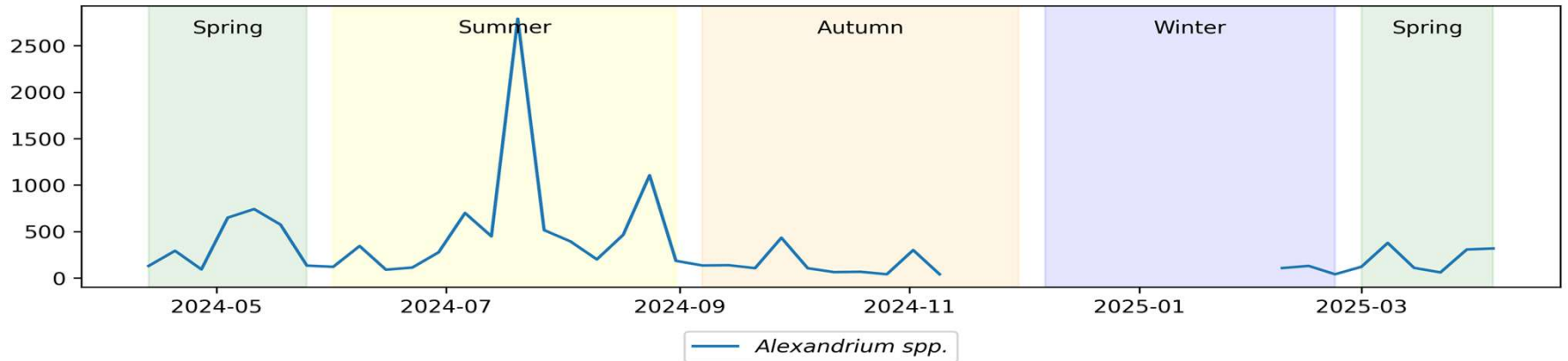
National Yearly Trend 06/04/24 - 05/04/25



Trend of Maximum Toxin concentrations in Shellfish Species (measured in  $\mu\text{g}/\text{kg}$ )

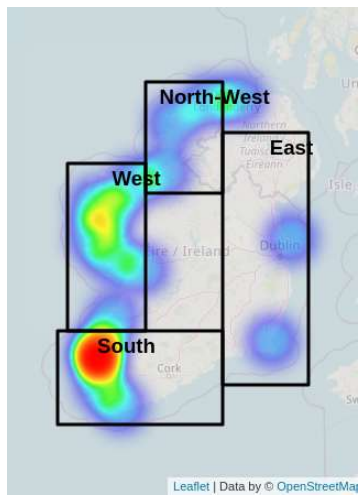


Trend of Average Counts of Toxin Causing PhytoPlankton Species Per Week (measured in Cells per Litre)

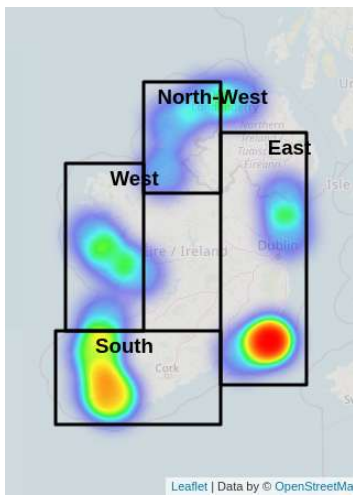


# Fish Harming Phytoplankton

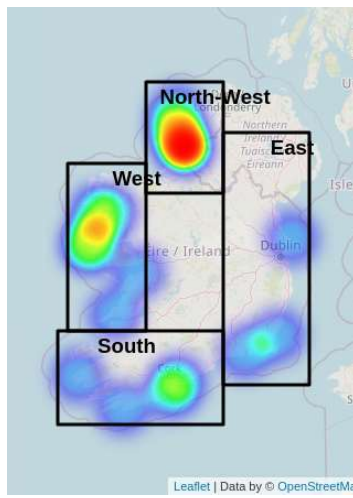
National 4-Week Analysis: 09/03/25 to 05/04/25



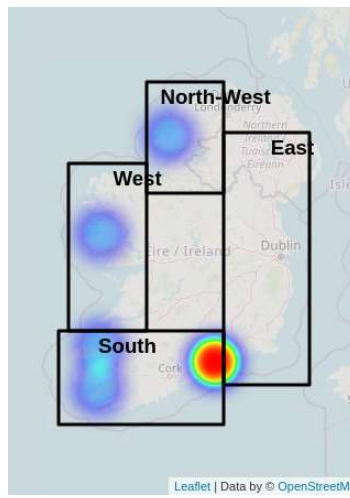
*Heterocapsa sp.*



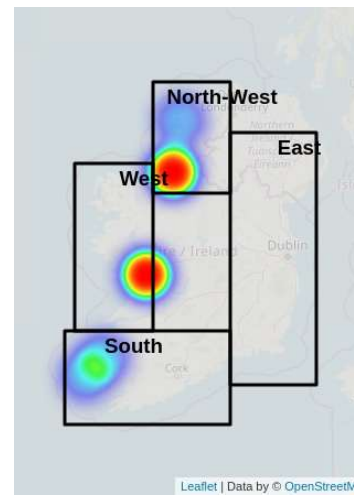
*Alexandrium sp.*



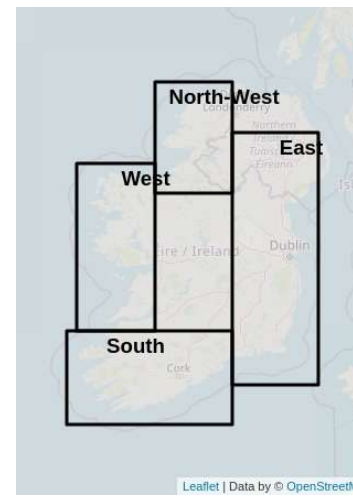
*Coscinodiscus sp.*



*Phaeocystis sp.*

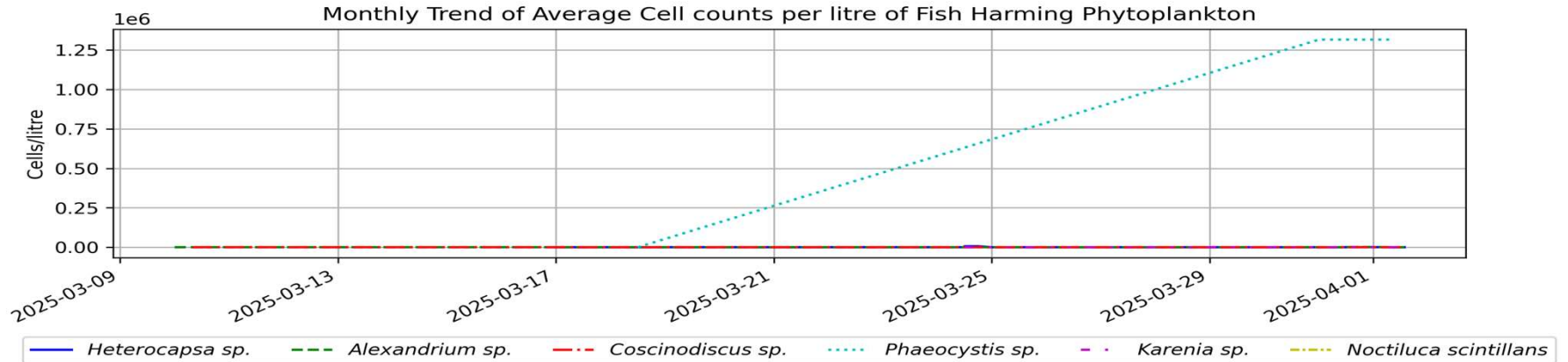


*Karenia sp.*



*Noctiluca Scintillans*

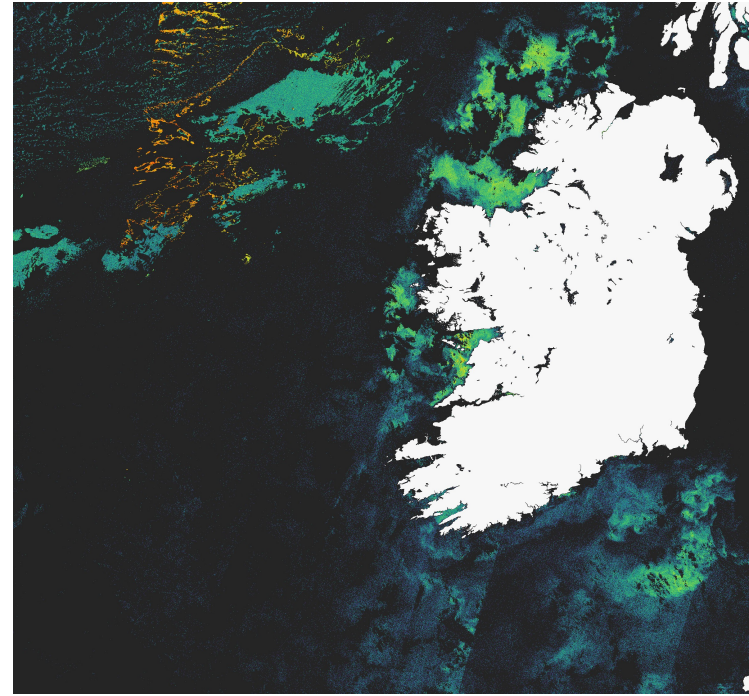
Generally phytoplankton cell levels continuing at low levels consistent into the Spring bloom cycle. Sea water temperatures & light levels are increasing and cloud cover fluctuates. Offshore transportation potential higher likelihood of occurrence as insitu risk levels of HABs growth increasing significantly. Any Phytoplankton species at sufficient numbers may cause temporary issues in water quality which could impact specific areas over the course of a tidal cycle or for a period of days while specific suitable conditions prevail. Please note some blooms can occur rapidly and acutely. If concerned about a problematic or toxic species level please check specific site information updates at [www.marine.ie](http://www.marine.ie).



Sea Surface Temperature (°C)



Chlorophyll Concentrations (mg/m3)



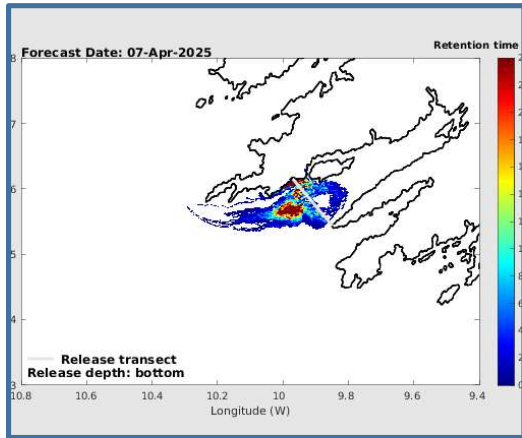
Sea water temperatures beginning to rise with increasing light levels and increasing water turbulence in general. Pseudo-nitzschia spp. counts are high, risk levels are still high on Southwest coasts and could increase on all Western coasts. Please check specific area information for local activity. Localised temporary blooms becoming less likely.

Marine Institute Data Buoy – Temperature Data

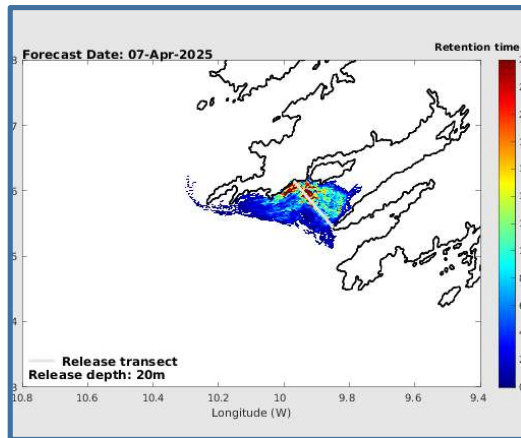


- NW Coast (M4) Average SST of 10.9 Celcius: Increase of 0.88 Celcius over the historic Weekly Average
- SW Coast (M3) Average SST of 11.38 Celcius: Increase of 0.59 Celcius over the historic Weekly Average
- SE Coast (M5) Average SST of 10.05 Celcius: Increase of 0.66 Celcius over the historic Weekly Average

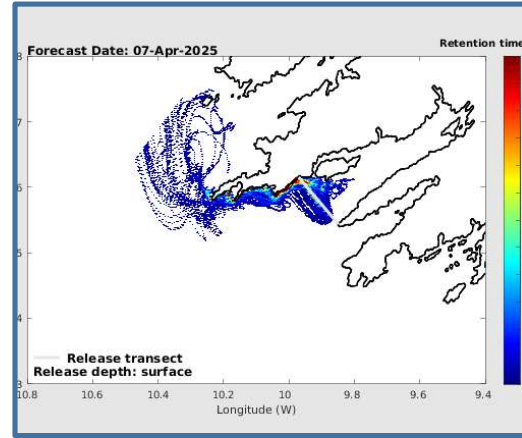
The maps show the **most likely transport pathways for the next 3 days of phytoplankton** found along the **presented transects** (black lines off Mizen Head and the Mouth of Bantry Bay) and **water depths** (bottom, 20 metres and surface).  
**Reddish colours represent areas where phytoplankton remain longest.** **Cooler colours represent areas where phytoplankton remain for shorter periods**



Bottom water

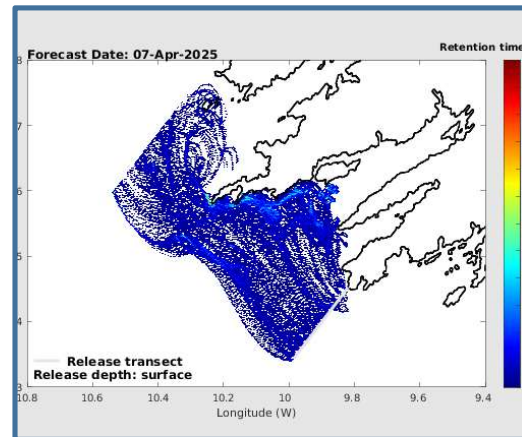
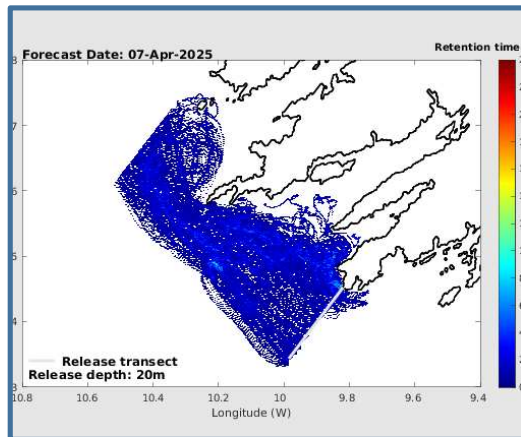
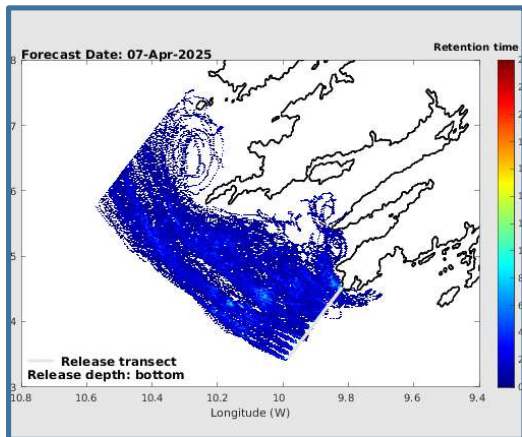


Water @ 20 metres

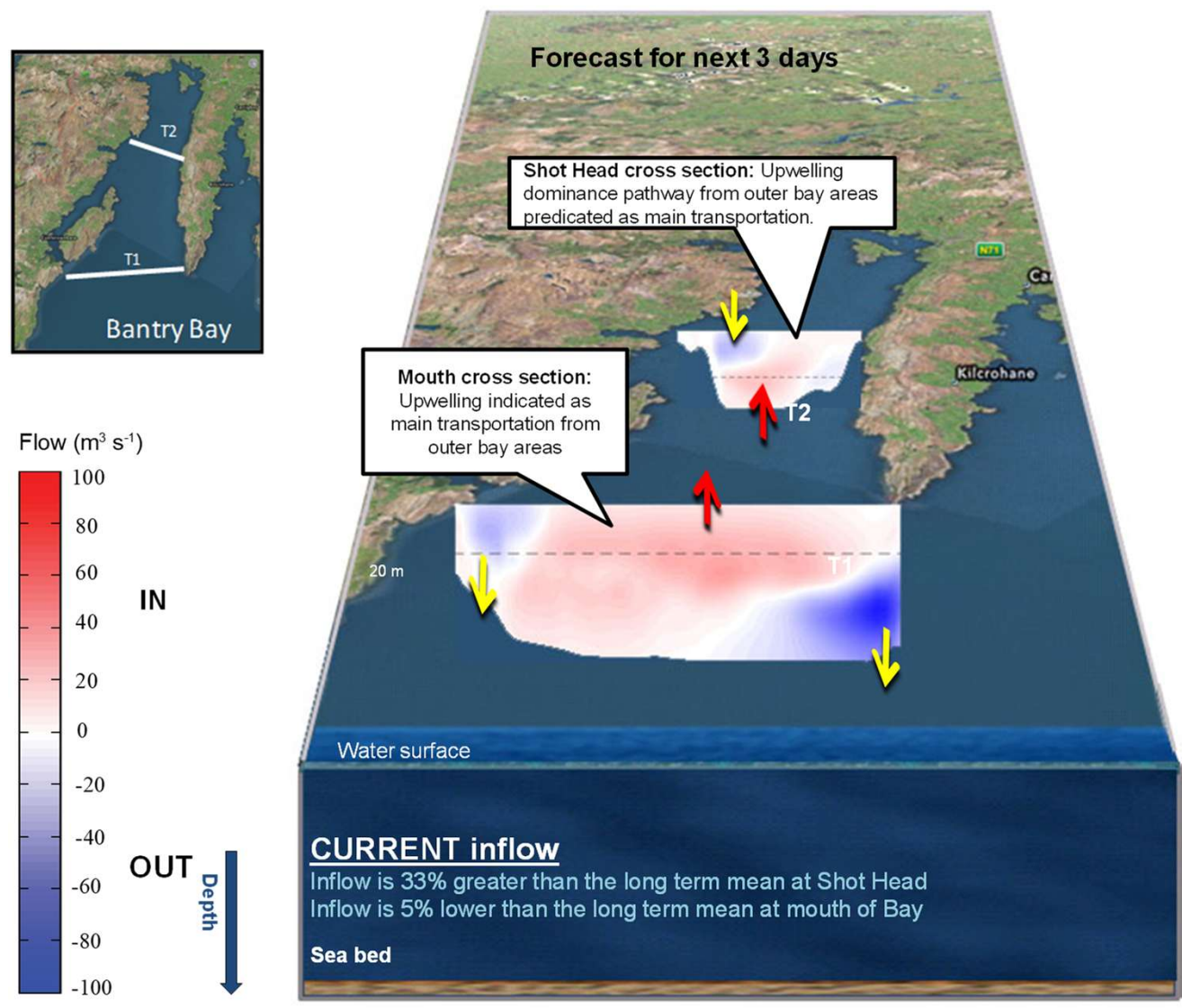


Surface water

**Mouth of Bantry Bay:**  
Downwelling water movements continue into inner bay areas, particularly on Northern shores.

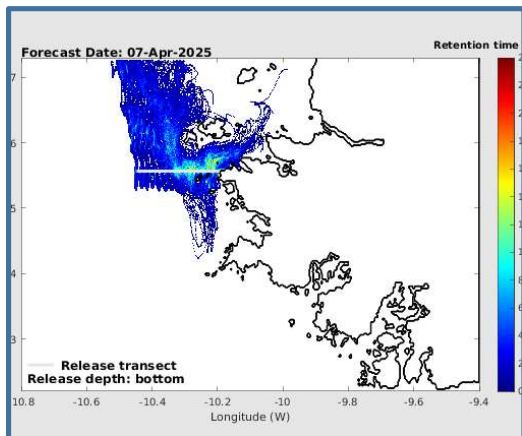


**Mizen Head:**  
Northerly directional dominance remains in all depths, especially in surface zones.

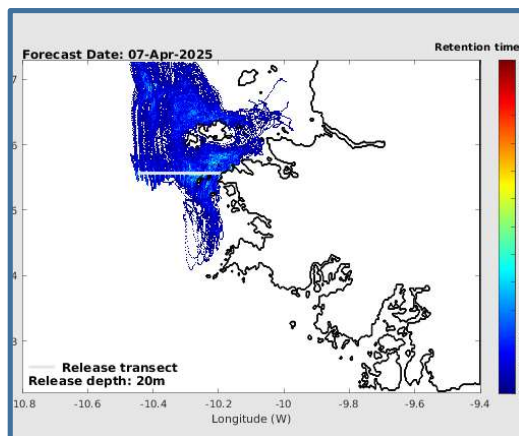


The maps show the **most likely transport pathways for the next 3 days of phytoplankton** found along the **presented transects** i.e. white lines off Aughrus Point and the Mouth of Killary Harbour, and **water depths** (bottom, 20 metres and surface).

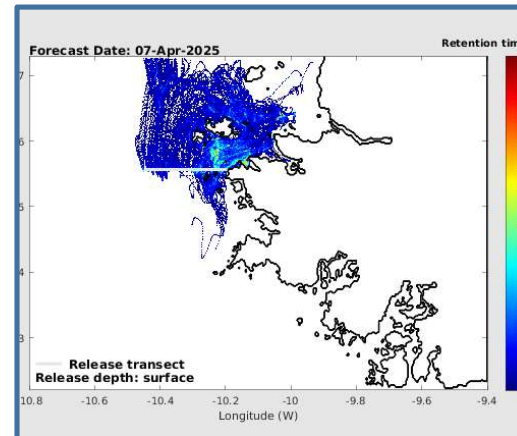
**Reddish colours represent areas where phytoplankton remain longest.** **Cooler colours represent areas where phytoplankton remain for shorter periods**



Bottom water



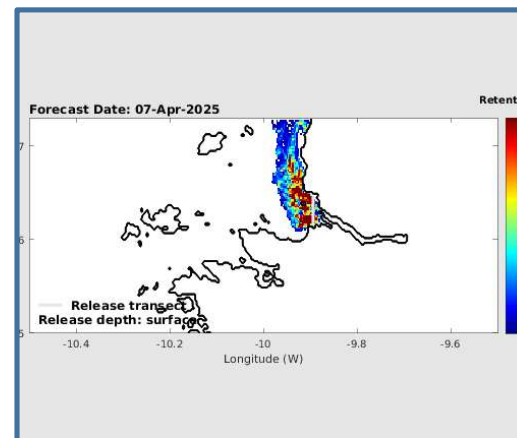
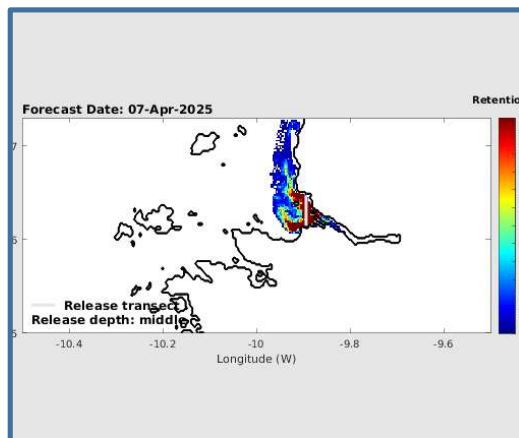
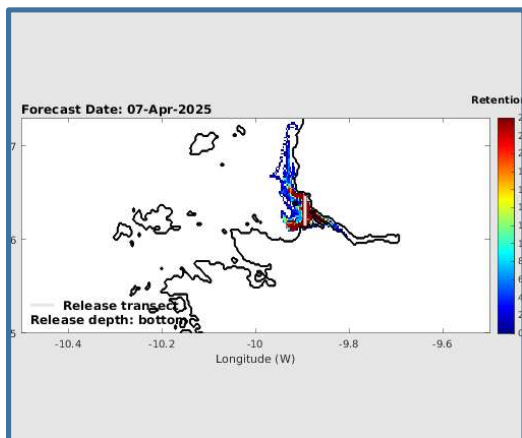
Water @ 20 metres



Surface water

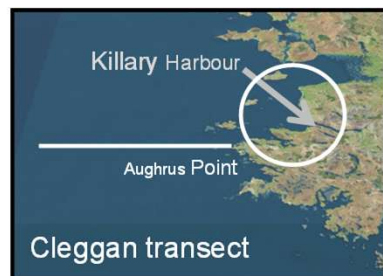
### Cleggan

- The Northerly movements in all depths continues, with increased strength indicated at surface waters.

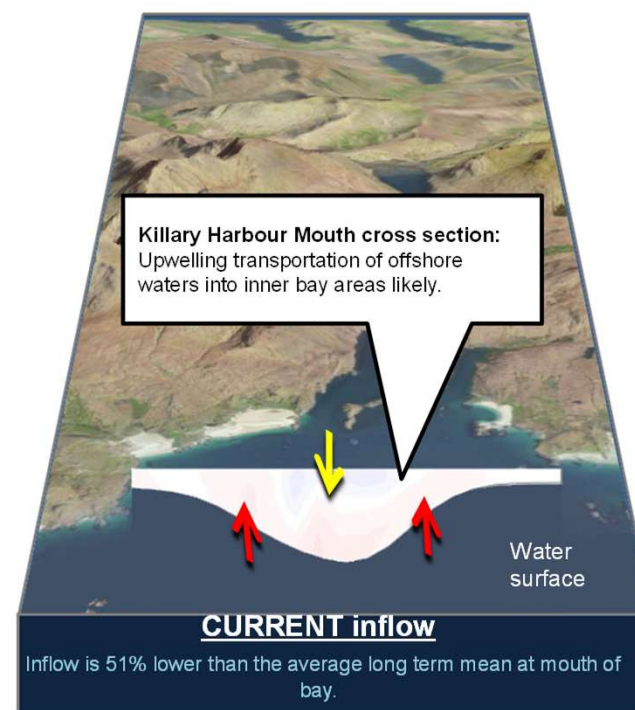
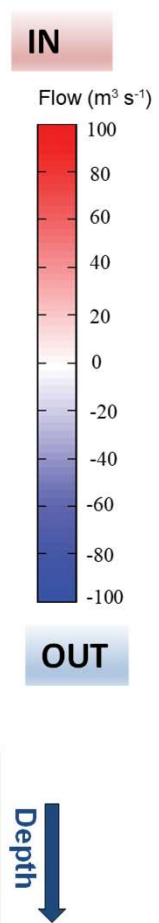
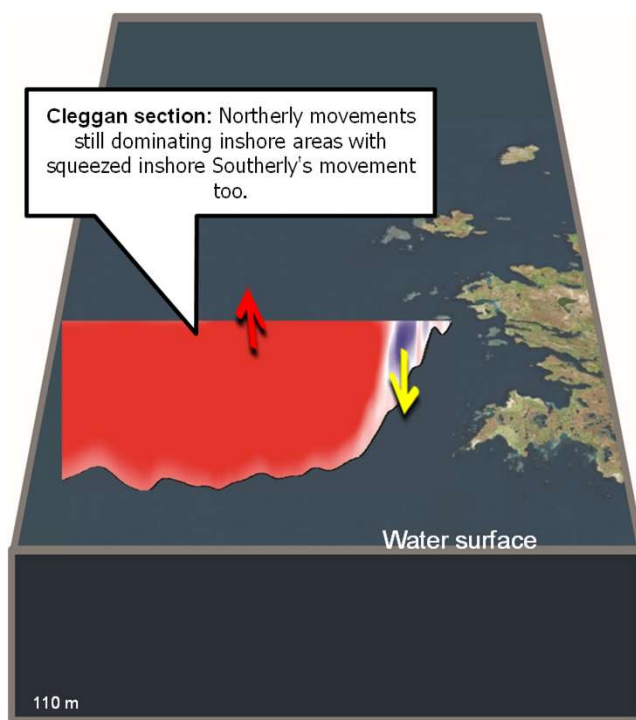


### Killary

- Upwelling of offshore water movement predicted as main inshore transportation.



Forecast for next 3 days





Have a question? Please email us [habs@marine.ie](mailto:habs@marine.ie)

This Harmful Algal Blooms (HAB) Bulletin aims to provide a short (3-5 day) predictive forecast on the likelihood of the onset of a HAB event occurring/continuing in a region. The data provided for the compilation of this report is derived from a number of sources comprising of in-situ, remote sensing and hydrodynamic modelling datasets. For the latest and historical biotoxin and phytoplankton results for aquaculture production areas please visit <https://webapps.marine.ie/habs>

#### In-situ Data

- Biotoxin and Phytoplankton data is provided by National Monitoring Programmes from the HABs database (Marine Institute)
- Heat map images – Leaflet.

#### Remote Sensing Data

- Sea Surface Temperature Data Product: SST\_NWS\_SST\_L4\_NRT\_OBSERVATIONS\_010\_003 (ODYESSA L4 SST from Copernicus CMEMS MCS).
- Chlorophyll image data is provided by:EUR-L4-CHL-ATL-v01 (IFREMER/ DYNECO and CERSAT).
- Sea Surface Temperature observations: Irish weather buoy network (Marine Institute).

#### Hydrodynamic modelled data

- Particle Tracking Simulation data: The downscale models of areas of particular interest (Bantry Bay, Killary Harbour and Cleggan Bay) incorporate online particle tracking with virtual particles released at pre-defined transects at the start of each model. The operational model produces an estimate of the ocean state once a week and a daily 3-day forecast of the dominant regional physical processes that result in water exchange events between the bay and its adjacent shelf (Marine Institute).
- Hydrodynamic model data: Hydrodynamic nowcast/forecast models show the latest 3-day volumetric flux forecast for vertical transects at the mouth and mid-bay. The results are plotted graphically on a map of the area.

#### Definitions

- A toxic site is defined as a site that had at least 1 result in the time period indicated greater than the regulatory limit.
- Heat maps represent relative distribution and patterns, and should not be interpreted as indicative of the maximum or absolute concentrations of a toxin in a region.
- Risk levels are calculated based on internal logic applied to measurements captured over the period, along with any additional information available to the evaluator. These risk levels are to be regarded as advisory only.
- Trends are calculated based on average or maximum values per week over the period of time and the slope of the line connecting these points.

#### Disclaimers

The predictions and comments produced within this bulletin are based on our expert opinion on the datasets and sources as outlined above. The Marine Institute cannot accept any responsibility for business and risk management decisions on harvesting and husbandry based on this report.

#### Acknowledgements

Funding for the development of this bulletin version has been provided by Interreg Atlantic Area Project: PRIMROSE (Predicting the Impact of Regional Scale events on the Aquaculture Sector) EPA 182/2106